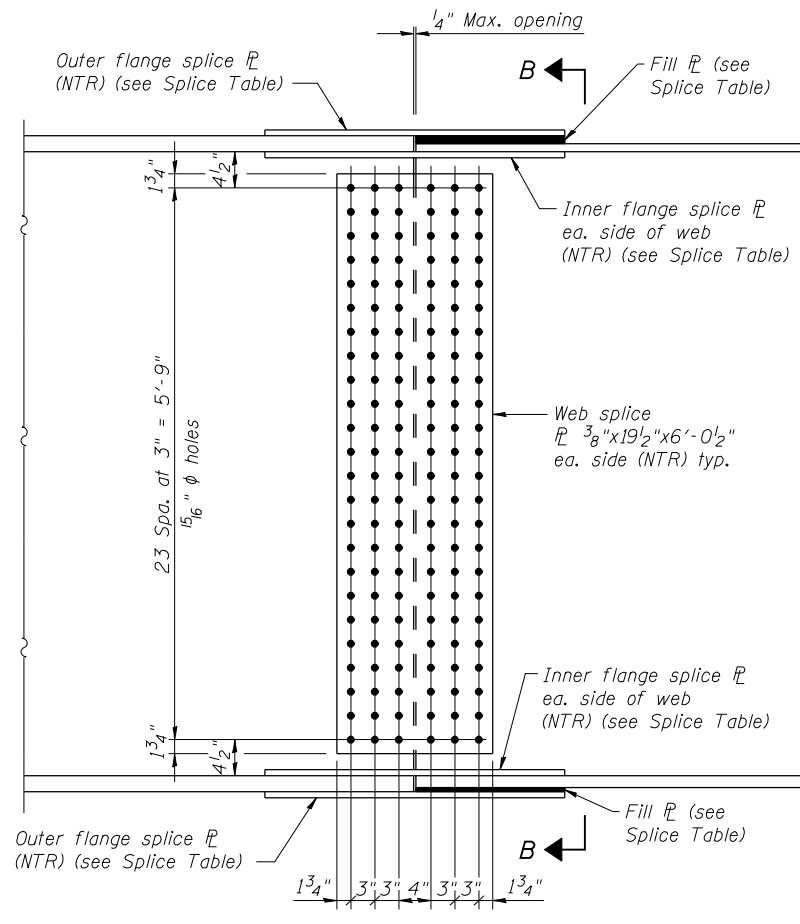
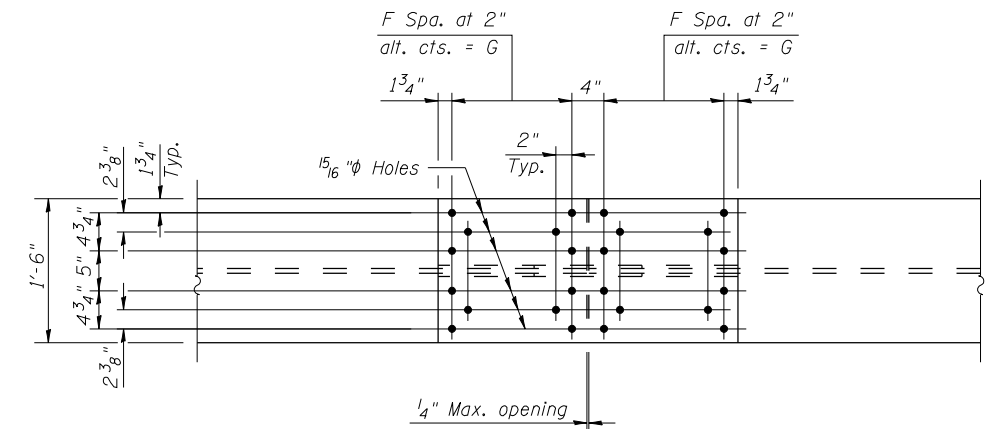


SECTION B-B



ELEVATION



FLANGE SPLICE
(Top and Bottom Flanges)

SN 026-0106 SPLICE TABLE

Splice Location	Top Flange						Bottom Flange					
	Outer Flange PL	Inner Flange PL	Fill PL	F	G	No. Bolts	Outer Flange PL	Inner Flange PL	Fill PL	F	G	No. Bolts
Field Splice 1-1	1/2"x18"x1'-11 1/2"	2-1/2"x8 1/4"x1'-11 1/2"	1/4"x18"x11 5/8"	4	8"	32	1/2"x18"x1'-11 1/2"	2-1/2"x8 1/4"x1'-11 1/2"	1/4"x18"x11 5/8"	4	8"	32
Field Splice 2-1	1/2"x18"x1'-11 1/2"	2-1/2"x8 1/4"x1'-11 1/2"	1/4"x18"x11 5/8"	4	8"	32	1/2"x18"x1'-11 1/2"	2-1/2"x8 1/4"x1'-11 1/2"	1/4"x18"x11 5/8"	4	8"	32
Field Splice 2-2	1/2"x18"x1'-11 1/2"	2-1/2"x8 1/4"x1'-11 1/2"	1/4"x18"x11 5/8"	4	8"	32	1/2"x18"x1'-11 1/2"	2-1/2"x8 1/4"x1'-11 1/2"	1/4"x18"x11 5/8"	4	8"	32
Field Splice 3-1	1/2"x18"x1'-11 1/2"	2-1/2"x8 1/4"x1'-11 1/2"	1/4"x18"x11 5/8"	4	8"	32	1/2"x18"x1'-11 1/2"	2-1/2"x8 1/4"x1'-11 1/2"	1/4"x18"x11 5/8"	4	8"	32
Field Splice 3-2	1/2"x18"x1'-11 1/2"	2-1/2"x8 1/4"x1'-11 1/2"	1/4"x18"x11 5/8"	4	8"	32	1/2"x18"x1'-11 1/2"	2-1/2"x8 1/4"x1'-11 1/2"	1/4"x18"x11 5/8"	4	8"	32
Field Splice 4-1	1/2"x18"x1'-11 1/2"	2-1/2"x8 1/4"x1'-11 1/2"	1/4"x18"x11 5/8"	4	8"	32	1/2"x18"x1'-11 1/2"	2-1/2"x8 1/4"x1'-11 1/2"	1/4"x18"x11 5/8"	4	8"	32
Field Splice 4-2	1/2"x18"x1'-11 1/2"	2-1/2"x8 1/4"x1'-11 1/2"	1/4"x18"x11 5/8"	4	8"	32	1/2"x18"x1'-11 1/2"	2-1/2"x8 1/4"x1'-11 1/2"	1/4"x18"x11 5/8"	4	8"	32
Field Splice 5-1	1/2"x18"x1'-11 1/2"	2-1/2"x8 1/4"x1'-11 1/2"	1/4"x18"x11 5/8"	4	8"	32	1/2"x18"x1'-11 1/2"	2-1/2"x8 1/4"x1'-11 1/2"	1/4"x18"x11 5/8"	4	8"	32
Field Splice 5-2	1/2"x18"x2'-7 1/2"	2-1/2"x8 1/4"x2'-7 1/2"	1/2"x18"x1'-3 5/8"	6	12"	44	1/2"x18"x2'-7 1/2"	2-1/2"x8 1/4"x2'-7 1/2"	1/2"x18"x1'-3 5/8"	6	12"	44
Field Splice 6-1	1/2"x18"x2'-7 1/2"	2-1/2"x8 1/4"x2'-7 1/2"	1/2"x18"x1'-3 5/8"	6	12"	44	5/8"x18"x2'-7 1/2"	2-5/8"x8 1/4"x2'-7 1/2"	1/4"x18"x1'-3 5/8"	6	12"	44

SN 026-0107 SPLICE TABLE

Splice Location	Top Flange						Bottom Flange					
	Outer Flange PL	Inner Flange PL	Fill PL	F	G	No. Bolts	Outer Flange PL	Inner Flange PL	Fill PL	F	G	No. Bolts
Field Splice 1-1	1/2"x18"x1'-11 1/2"	2-1/2"x8 1/4"x1'-11 1/2"	1/4"x18"x11 5/8"	4	8"	32	1/2"x18"x1'-11 1/2"	2-1/2"x8 1/4"x1'-11 1/2"	1/4"x18"x11 5/8"	4	8"	32
Field Splice 2-1	1/2"x18"x1'-11 1/2"	2-1/2"x8 1/4"x1'-11 1/2"	1/4"x18"x11 5/8"	4	8"	32	1/2"x18"x1'-11 1/2"	2-1/2"x8 1/4"x1'-11 1/2"	1/4"x18"x11 5/8"	4	8"	32
Field Splice 2-2	1/2"x18"x1'-11 1/2"	2-1/2"x8 1/4"x1'-11 1/2"	1/4"x18"x11 5/8"	4	8"	32	1/2"x18"x1'-11 1/2"	2-1/2"x8 1/4"x1'-11 1/2"	1/4"x18"x11 5/8"	4	8"	32
Field Splice 3-1	1/2"x18"x1'-11 1/2"	2-1/2"x8 1/4"x1'-11 1/2"	1/4"x18"x11 5/8"	4	8"	32	1/2"x18"x1'-11 1/2"	2-1/2"x8 1/4"x1'-11 1/2"	1/4"x18"x11 5/8"	4	8"	32
Field Splice 3-2	1/2"x18"x1'-11 1/2"	2-1/2"x8 1/4"x1'-11 1/2"	1/4"x18"x11 5/8"	4	8"	32	1/2"x18"x1'-11 1/2"	2-1/2"x8 1/4"x1'-11 1/2"	1/4"x18"x11 5/8"	4	8"	32
Field Splice 4-1	1/2"x18"x1'-11 1/2"	2-1/2"x8 1/4"x1'-11 1/2"	1/4"x18"x11 5/8"	4	8"	32	1/2"x18"x1'-11 1/2"	2-1/2"x8 1/4"x1'-11 1/2"	1/4"x18"x11 5/8"	4	8"	32
Field Splice 4-2	1/2"x18"x1'-11 1/2"	2-1/2"x8 1/4"x1'-11 1/2"	1/4"x18"x11 5/8"	4	8"	32	1/2"x18"x1'-11 1/2"	2-1/2"x8 1/4"x1'-11 1/2"	1/4"x18"x11 5/8"	4	8"	32
Field Splice 5-1	1/2"x18"x1'-11 1/2"	2-1/2"x8 1/4"x1'-11 1/2"	1/4"x18"x11 5/8"	4	8"	32	1/2"x18"x1'-11 1/2"	2-1/2"x8 1/4"x1'-11 1/2"	1/4"x18"x11 5/8"	4	8"	32
Field Splice 5-2	1/2"x18"x2'-7 1/2"	2-1/2"x8 1/4"x2'-7 1/2"	1/2"x18"x1'-3 5/8"	6	12"	44	1/2"x18"x2'-7 1/2"	2-1/2"x8 1/4"x2'-7 1/2"	1/2"x18"x1'-3 5/8"	6	12"	44
Field Splice 6-1	1/2"x18"x2'-7 1/2"	2-1/2"x8 1/4"x2'-7 1/2"	1/2"x18"x1'-3 5/8"	6	12"	44	5/8"x18"x2'-7 1/2"	2-5/8"x8 1/4"x2'-7 1/2"	1/4"x18"x1'-3 5/8"	6	12"	44

NOTES:

- All splice plates shall be AASHTO M270 Grade 50 steel, except fill plates which may be AASHTO M270 Grade 36 or 50.
- All splice bolts shall be 7/8" phi ASTM A325 High Strength with 15/16" phi holes.
- Load carrying components designated "NTR" shall conform to the Impact Testing Requirement, Zone 2.



USER NAME = has	DESIGNED - RDP	08/13	REVISED -
ESCA PROJECT NO. 1070.09	CHECKED - SHL	08/13	REVISED -
	DRAWN - DWH	08/13	REVISED -
PLOT DATE = 1/28/2014 1:27:54 PM	CHECKED - RDP/ELH	01/14	REVISED -

STATE OF ILLINOIS
DEPARTMENT OF TRANSPORTATION

STEEL FRAMING DETAILS
STRUCTURE NOS. 026-0106 & 026-0107

SHEET NO. 63 OF 113 SHEETS

F.A.I. RTE.	SECTION	COUNTY	TOTAL SHEETS	SHEET NO.
70	(26-3B-1, 3B-1(3))BR	FAYETTE	277	143
CONTRACT NO. 74175			ILLINOIS FED. AID PROJECT	