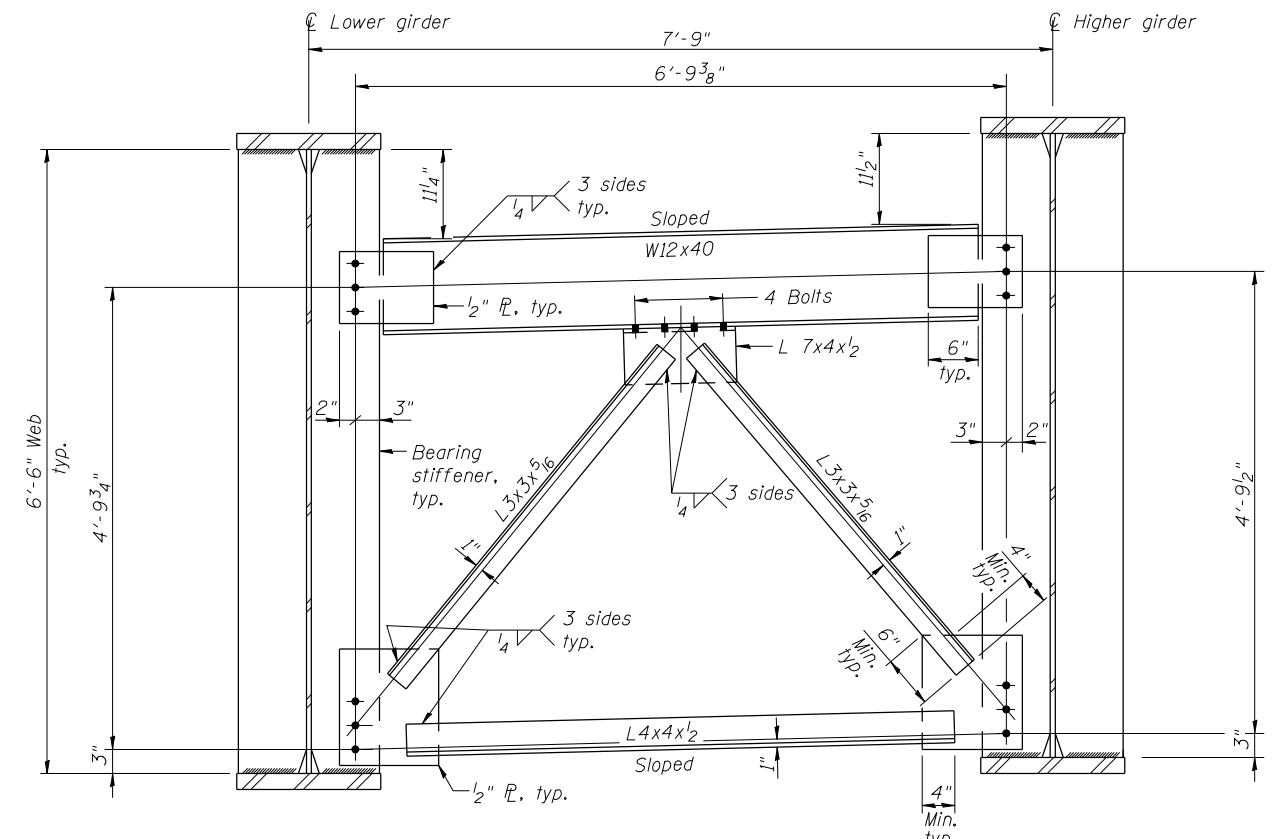
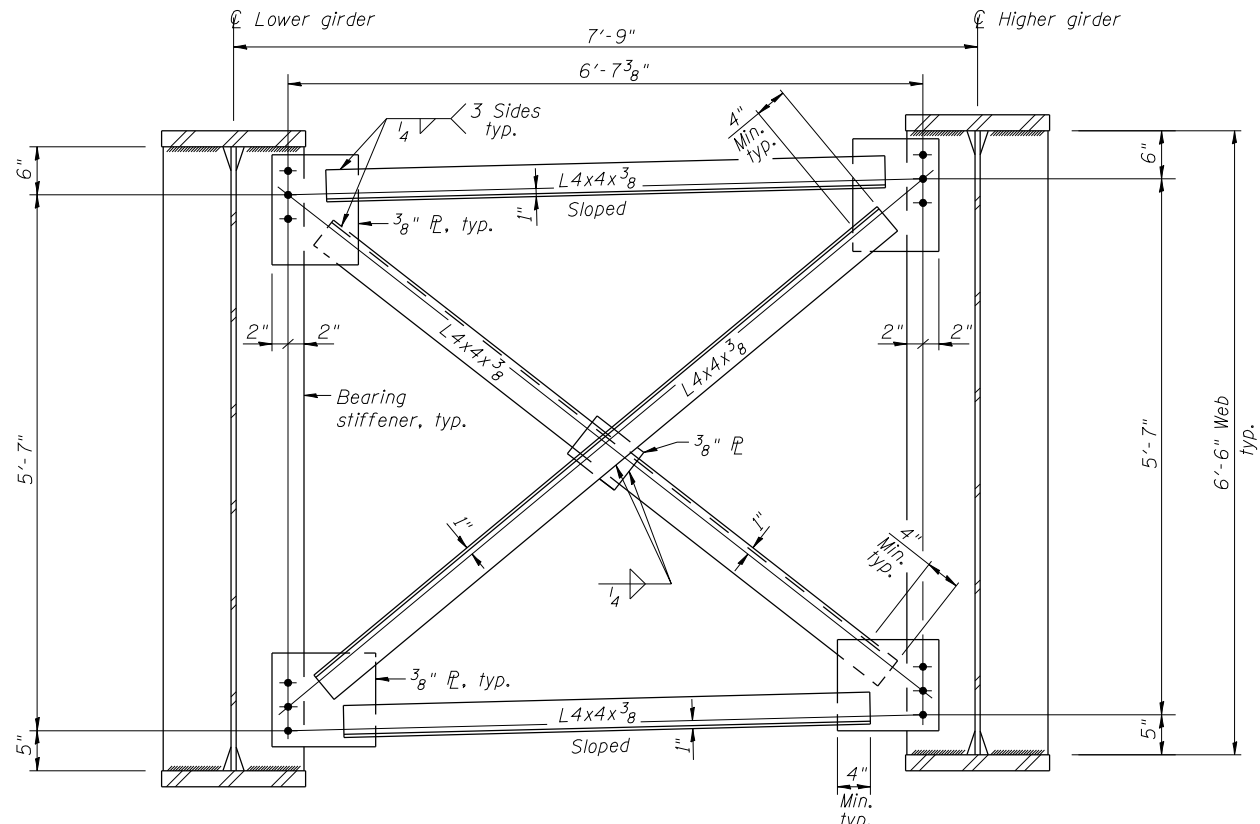


INTERIOR CROSS FRAME F1



END CROSS FRAME F3



PIER CROSS FRAME F2

- NOTES:**
1. Detail $\frac{15}{16}$ " ϕ holes for all $\frac{3}{4}$ " ϕ ASTM A325 Type 1, mechanically galvanized bolts.
 2. Two hardened washers are required for each set of oversized holes.
 3. AASHTO M270 Grade 50 steel shall be used for all cross frames, connection plates, and bearing stiffeners.
 4. All cross frames between girders shall be installed with erection pins and bolts in accordance with the erection plan approved by the Engineer. Individual cross frames at supports may be temporarily disconnected to install bearing anchor rods.
 5. Place end cross frames F3 and F5 with outstanding angle legs outward, away from abutment backwalls.



USER NAME = hos	DESIGNED - ELH	08/13	REVISED -
ESCA PROJECT NO. 1070.09	CHECKED - RDP	08/13	REVISED -
	DRAWN - DWH	08/13	REVISED -
PLOT DATE = 1/28/2014 1:29:12 PM	CHECKED - ELH	08/13	REVISED -

STATE OF ILLINOIS
DEPARTMENT OF TRANSPORTATION

STEEL FRAMING DETAILS
STRUCTURE NOS. 026-0106 & 026-0107

SHEET NO. 64 OF 113 SHEETS

F.A.I. RTE.	SECTION	COUNTY	TOTAL SHEETS	SHEET NO.
70	(26-3B-1, 3B-1(3))BR	FAYETTE	277	144
CONTRACT NO. 74175				

ILLINOIS FED. AID PROJECT