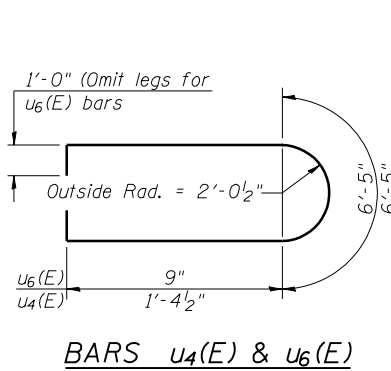


PIER 2 BILL OF MATERIAL

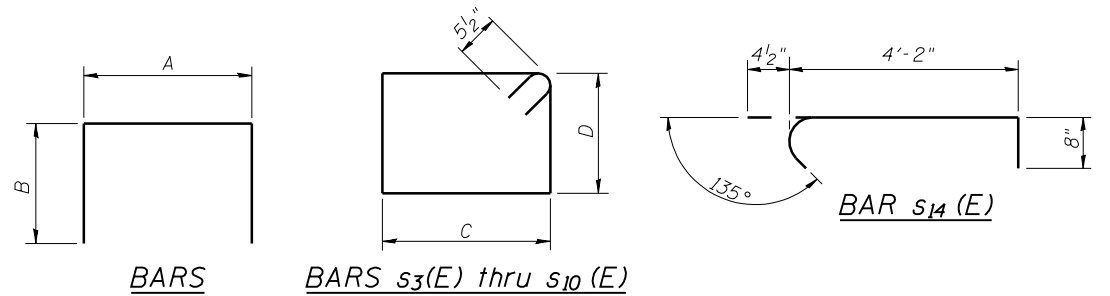
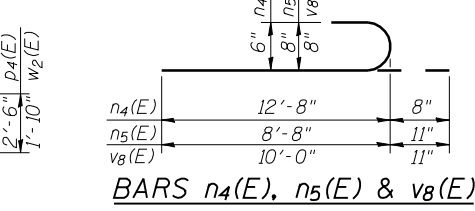
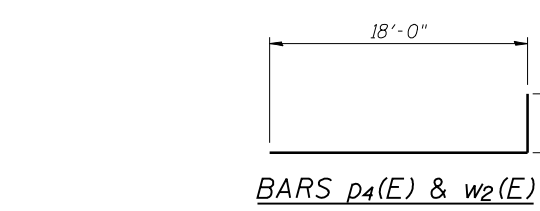
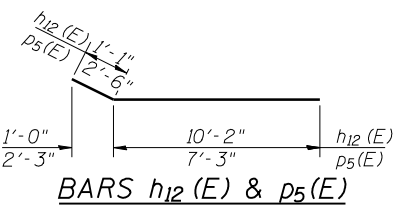
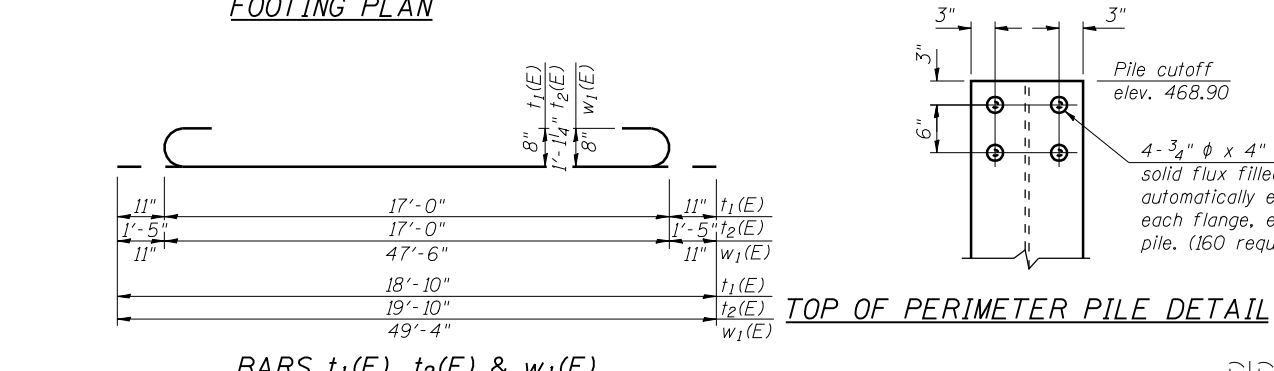
Bar	No.	Size	Length	Shape
h10(E)	28	#5	26'-9"	—
h11(E)	36	#6	30'-6"	┌
h12(E)	40	#5	11'-3"	┌
h13(E)	40	#5	11'-2"	—
h14(E)	20	#5	30'-0"	—
h15(E)	7	#5	7'-5"	—
n4(E)	66	#6	13'-4"	┌
n5(E)	66	#8	9'-7"	┌
p3(E)	7	#9	49'-5"	┌
p4(E)	12	#10	20'-6"	┌
p5(E)	10	#7	9'-9"	┌
p6(E)	2	#7	33'-2"	—
s3(E)	4	#5	14'-7"	┌
s4(E)	4	#5	15'-0"	┌
s5(E)	4	#5	15'-5"	┌
s6(E)	4	#5	15'-10"	┌
s7(E)	4	#5	16'-3"	┌
s8(E)	4	#5	16'-9"	┌
s9(E)	4	#5	17'-2"	┌
s10(E)	4	#5	17'-7"	┌
s11(E)	96	#5	13'-0"	┌
s12(E)	70	#5	14'-2"	┌
s13(E)	11	#5	7'-6"	┌
s14(E)	348	#4	5'-3"	┌
t1(E)	48	#8	18'-10"	┌
t2(E)	46	#10	19'-10"	┌
u4(E)	36	#6	11'-2"	┌
u5(E)	10	#6	11'-10"	┌
u6(E)	28	#5	7'-11"	┌
v8(E)	66	#8	10'-11"	┌
w1(E)	33	#8	49'-4"	┌
w2(E)	44	#10	19'-10"	┌
Structure Excavation		Cu. Yd.	220	
Concrete Structures		Cu. Yd.	221.8	
Reinforcement Bars, Epoxy Coated		Pound	31190	
Furnishing Steel Piles HP14x89		Foot	2592	
Driving Piles		Foot	2592	

PARTIAL ELEVATION
(Showing s14(E) bar pattern)

Note:
Not all lines of horizontal reinforcement bars are shown. Total number of s14(E) bars in Bill of Materials is based on applying the pattern shown to the actual pier dimensions and horizontal reinforcement spacing.



PILE DATA
Type: HP14x89
Nominal Required Bearing: 705 kips
Factored Resistance Available: 388 kips
Est. Length: 81 feet
No. Production Piles: 32
No. Test Piles: 0



A & B DIMENSIONS

Bar	A	B
h11(E)	28'-6"	1'-0"
p3(E)	46'-3"	1'-7"
s11(E)	4'-0"	4'-6"
s12(E)	5'-2"	4'-6"
s13(E)	5'-2"	1'-2"
u5(E)	5'-0"	3'-5"

C & D DIMENSIONS

Bar	C	D
s3(E)	4'-0"	2'-10"
s4(E)	4'-0"	3'-0 1/2"
s5(E)	4'-0"	3'-3"
s6(E)	4'-0"	3'-5 1/2"
s7(E)	4'-0"	3'-8"
s8(E)	4'-0"	3'-11"
s9(E)	4'-0"	4'-1 1/2"
s10(E)	4'-0"	4'-4"



USER NAME = has	DESIGNED - RDP	08/13	REVISED -
ESCA PROJECT NO. 1070.09	CHECKED - MTD	08/13	REVISED -
PLOT DATE = 1/28/2014	DRAWN - DWH	08/13	REVISED -
2:19:45 PM	CHECKED - ELH	01/14	REVISED -

**STATE OF ILLINOIS
DEPARTMENT OF TRANSPORTATION**

**PIER 2 - WB
STRUCTURE NO. 026-0106**

SHEET NO. 88 OF 113 SHEETS

F.A.I. RTE.	SECTION	COUNTY	TOTAL SHEETS	SHEET NO.
70	(26-3B-1, 3B-1(3))BR	FAYETTE	277	168
CONTRACT NO. 74175			ILLINOIS FED. AID PROJECT	