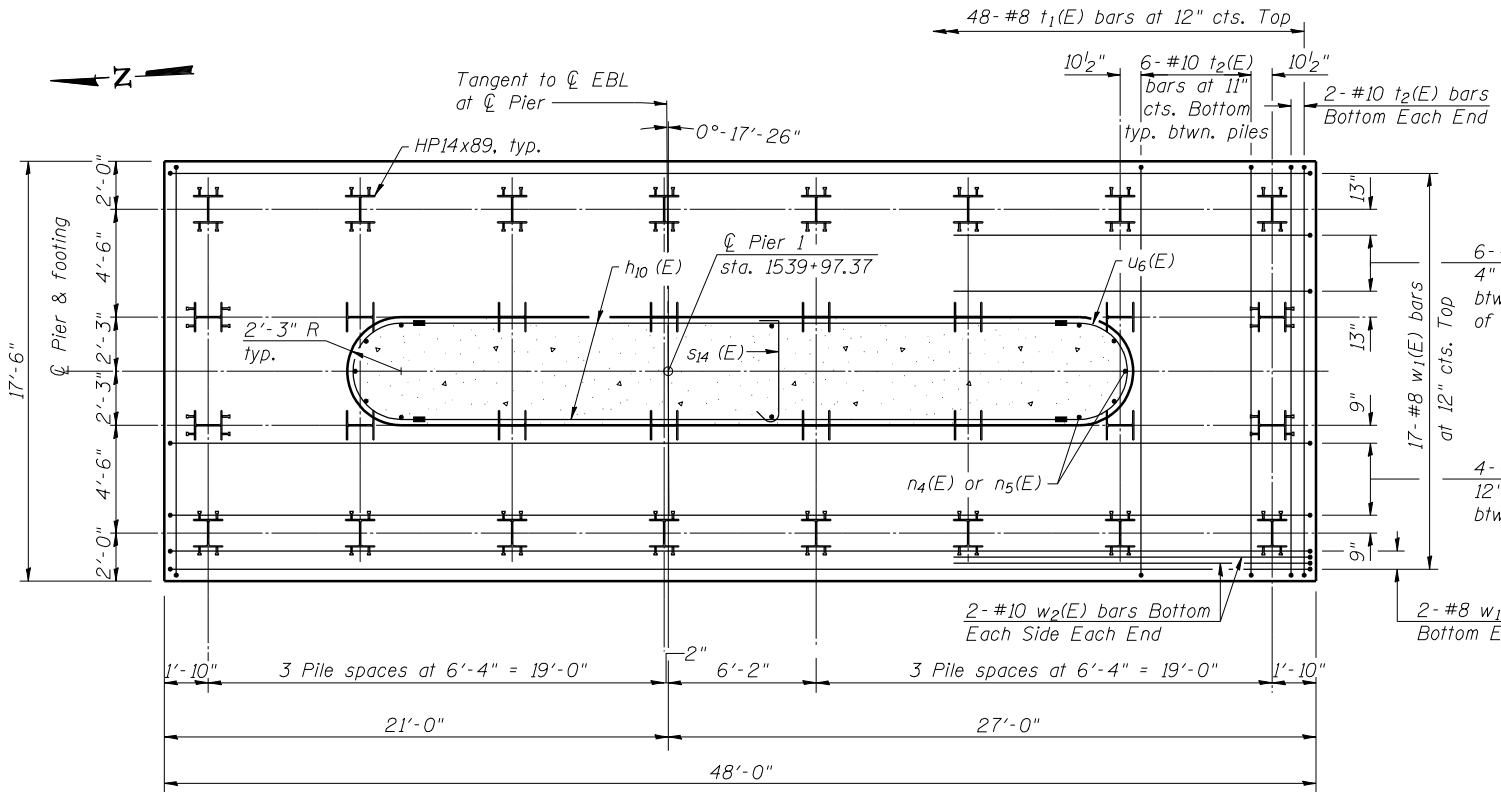
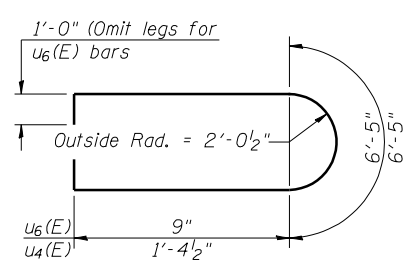


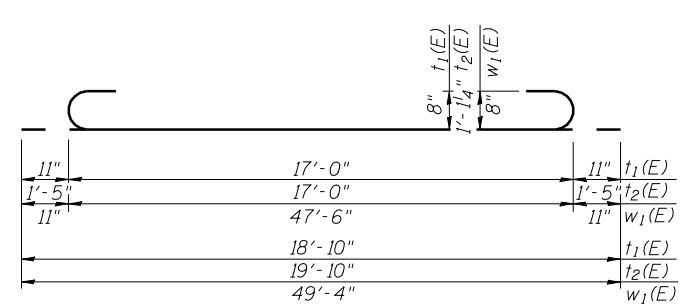
TOP OF PIER



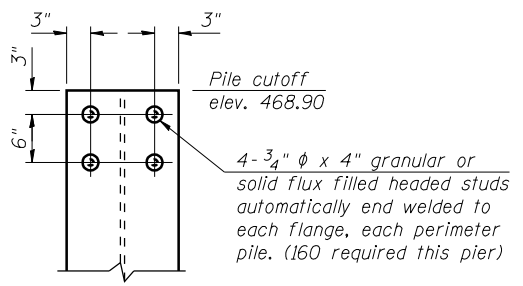
FOOTING PLAN



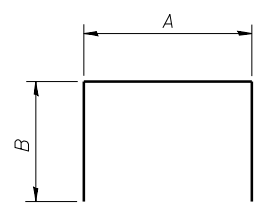
BARS $u_4(E)$ & $u_6(E)$



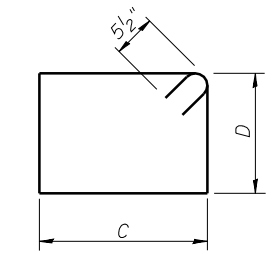
BARS $t_1(E)$, $t_2(E)$ & $w_1(E)$



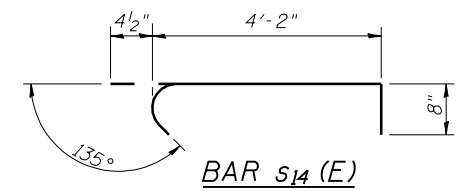
TOP OF PERIMETER PILE DETAIL



BARS



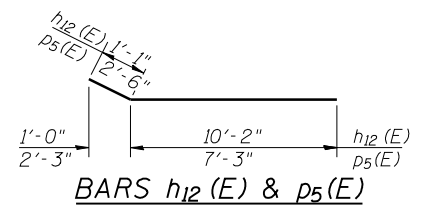
BARS $s_3(E)$ thru $s_{10}(E)$



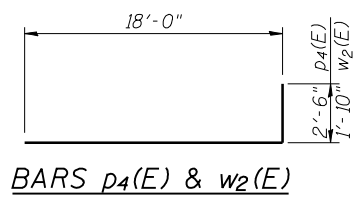
BAR $s_{14}(E)$

PILE DATA

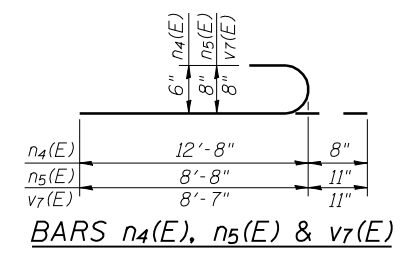
Type: HP14x89
 Nominal Required Bearing: 705 kips
 Factored Resistance Available: 388 kips
 Est. Length: 79 feet
 No. Production Piles: 32
 No. Test Piles: 0



BARS $h_{12}(E)$ & $p_5(E)$



BARS $p_4(E)$ & $w_2(E)$



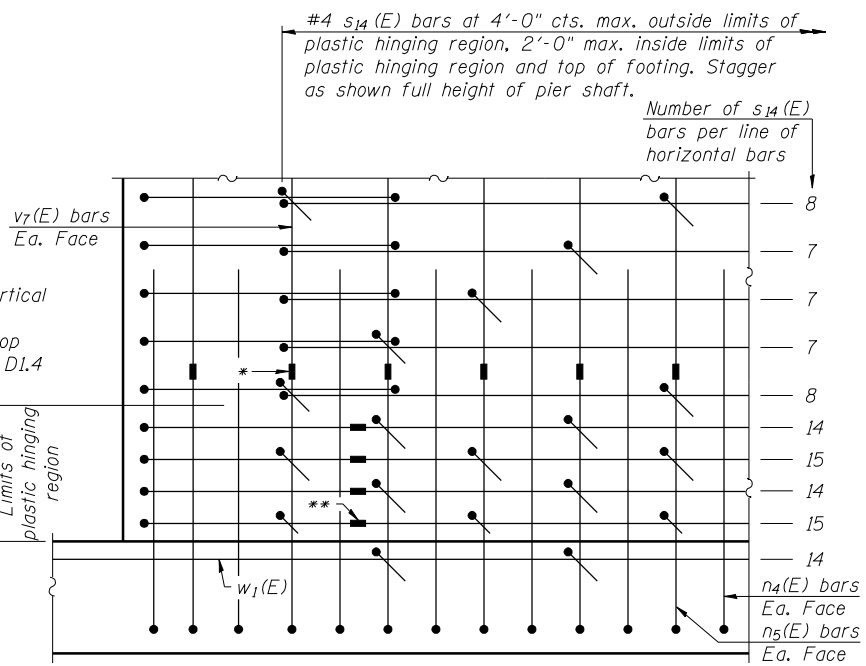
BARS $n_4(E)$, $n_5(E)$ & $v_7(E)$

A & B DIMENSIONS

Bar	A	B
$h_{11}(E)$	28'-6"	1'-0"
$p_3(E)$	46'-3"	1'-7"
$s_{11}(E)$	4'-0"	4'-6"
$s_{12}(E)$	5'-2"	4'-6"
$s_{13}(E)$	5'-2"	1'-2"
$u_5(E)$	5'-0"	3'-5"

C & D DIMENSIONS

Bar	C	D
$s_3(E)$	4'-0"	2'-10"
$s_4(E)$	4'-0"	3'-0 1/2"
$s_5(E)$	4'-0"	3'-3"
$s_6(E)$	4'-0"	3'-5 1/2"
$s_7(E)$	4'-0"	3'-8"
$s_8(E)$	4'-0"	3'-11"
$s_9(E)$	4'-0"	4'-1 1/2"
$s_{10}(E)$	4'-0"	4'-4"



PARTIAL ELEVATION

Note:
 Not all lines of horizontal reinforcement bars are shown. Total number of $s_{14}(E)$ bars in Bill of Materials is based on applying the pattern shown to the actual pier dimensions and horizontal reinforcement spacing.

PIER 1
BILL OF MATERIAL

Bar	No.	Size	Length	Shape
$h_{10}(E)$	28	#5	26'-9"	—
$h_{11}(E)$	34	#6	30'-6"	—
$h_{12}(E)$	40	#5	11'-3"	—
$h_{13}(E)$	40	#5	11'-2"	—
$h_{14}(E)$	20	#5	30'-0"	—
$h_{16}(E)$	7	#5	30'-9"	—
$h_{17}(E)$	7	#5	15'-3"	—
$n_4(E)$	66	#6	13'-4"	—
$n_5(E)$	66	#8	9'-7"	—
$p_3(E)$	7	#9	49'-5"	—
$p_4(E)$	12	#10	20'-6"	—
$p_5(E)$	10	#7	9'-9"	—
$p_6(E)$	2	#7	33'-2"	—
$s_3(E)$	4	#5	14'-7"	□
$s_4(E)$	4	#5	15'-0"	□
$s_5(E)$	4	#5	15'-5"	□
$s_6(E)$	4	#5	15'-10"	□
$s_7(E)$	4	#5	16'-3"	□
$s_8(E)$	4	#5	16'-9"	□
$s_9(E)$	4	#5	17'-2"	□
$s_{10}(E)$	4	#5	17'-7"	□
$s_{11}(E)$	96	#5	13'-0"	□
$s_{12}(E)$	70	#5	14'-2"	□
$s_{13}(E)$	63	#5	7'-6"	□
$s_{14}(E)$	341	#4	5'-3"	□
$t_1(E)$	48	#8	18'-10"	—
$t_2(E)$	46	#10	19'-10"	—
$u_4(E)$	34	#6	11'-2"	—
$u_5(E)$	10	#6	11'-10"	—
$u_6(E)$	28	#5	7'-11"	—
$v_7(E)$	66	#8	9'-6"	—
$w_1(E)$	33	#8	49'-4"	—
$w_2(E)$	44	#10	19'-10"	—
Structure Excavation		Cu. Yd.	240	
Concrete Structures		Cu. Yd.	223.0	
Reinforcement Bars, Epoxy Coated		Pound	31480	
Furnishing Steel Piles HP14x89		Foot	2528	
Driving Piles		Foot	2528	



USER NAME = has	DESIGNED - RDP	08/13	REVISED -
ESCA PROJECT NO. 1070.09	CHECKED - MTD	08/13	REVISED -
PLOT DATE = 1/28/2014	DRAWN - DWH	08/13	REVISED -
3:00:07 PM	CHECKED - ELH	01/14	REVISED -

STATE OF ILLINOIS
 DEPARTMENT OF TRANSPORTATION

PIER 1 - EB
 STRUCTURE NO. 026-0107

SHEET NO. 96 OF 113 SHEETS

F.A.I. RTE.	SECTION	COUNTY	TOTAL SHEETS	SHEET NO.
70	(26-3B-1, 3B-1(3))BR	FAYETTE	277	176
CONTRACT NO. 74175			ILLINOIS FED. AID PROJECT	