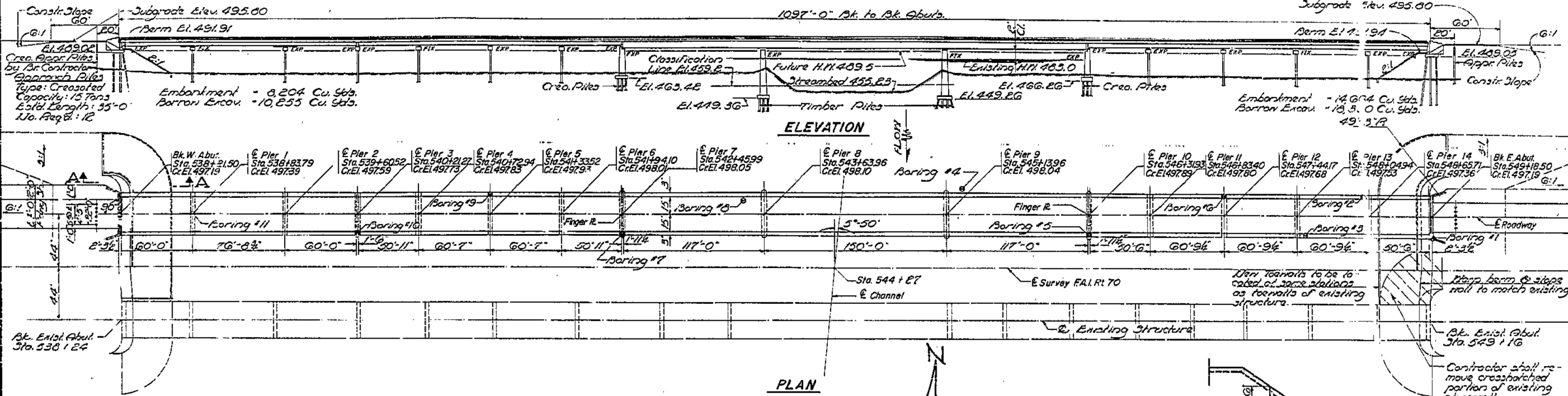


STATE OF ILLINOIS
DEPARTMENT OF PUBLIC WORKS & BUILDINGS
DIVISION OF HIGHWAYS

ROUTE NO.	SECTION	COUNTY	TOTAL SHEETS	SHEET NO.
I-70	26-3B-1(2)	FAYETTE	36	5
30 SHEETS				

B.M.: U.E. Piling of East Abut. Existing Structure
Sta. 549+15 Elev. 493.64
Existing Structure Truss & Steel Brms., 14 Spans
26' Span, Conc. Floor
To be used for East bound Lanes on
F.A.I. Rt. 70



GENERAL NOTES

Class A Concrete shall be used throughout. Coarse aggregate to be used in parapet handrails and end posts must be free of chert, flint, limonite, lignite and soft sandstone. The concrete floor slab shall be finished in accordance with Article 5113 of the Standard Specifications.

Slope shall be reinforced with welded wire fabric 6"x6" mesh, weighing 50# per 100 sq. ft. Rivets 8#, Open holes 1/4", unless otherwise shown.

All Structural Steel shall comply with the Specifications for Structural Steel, A.S.T.M. Designation A-36. Anchor bolts shall be set before riveting diaphragms over supports.

Roadway finger plates shall be assembled in the shop in proper position with the ends in place for shop inspection. The plates shall be flame cut as provided in Article 545(1) of the Standard Specifications. Finger plates are included in quantity of Structural Steel, Est'd. Wt. - 15,950 lbs.

The exposed surfaces of the finger plates and expansion guards shall be given two shop coats of red lead paint, the contact surfaces shall be given one coat of red lead paint. Anchor studs shall not be painted.

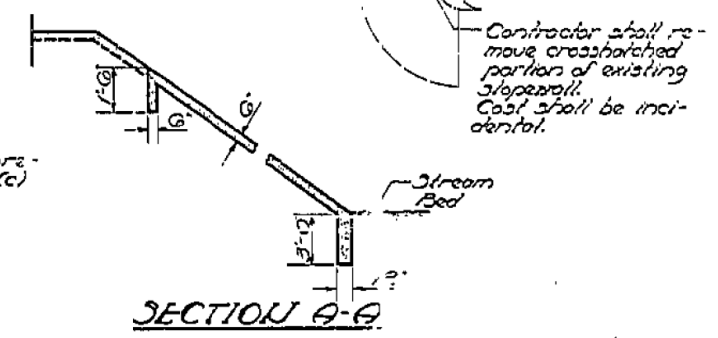
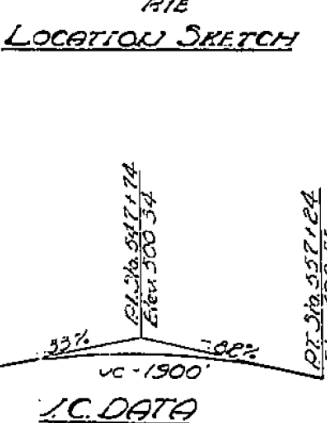
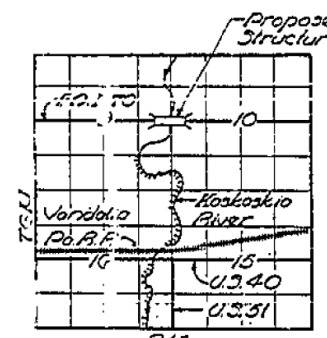
Expansion guards are included in quantity of Structural Steel, Est'd. Wt. - 2,460 lbs.

Except as otherwise provided, all structural steel shall receive one shop coat of red lead paint and two field coats of aluminum paint. See Articles 56.1 to 56.5 inclusive of the Standard Specifications.

The Contractor shall drive two metal shell test piles in permanent locations at each abutment; four (4) - metal shell test piles in permanent locations at Piers 1, 3, 6 & 12; one timber test pile in permanent location at Pier 8 and one timber test pile in the vicinity of Pier 10, as directed by the Engineer before ordering the remainder of piles.

The Contractor shall construct Bridge Seal Sealant on the East and West Abutts., Piers 3, 7 and 10. See the Special Provisions.

Metal Shell piles of the abutments shall be driven in holes pre-cored through the embankment in accordance with Article 60.9(c) of the Standard Specifications.



TOTAL BILL OF MATERIAL

Item	Unit	Super	Sub	Total
Borrow Excavation	Cu. Yds.			28,585
Class "B" Excavation for Structures	Cu. Yds.			726
Class "C" Excavation for Structures	Cu. Yds.			580
Class A Concrete	Cu. Yds.	1,200.7	160.7	1,361.4
Protective Coat	Sq. Yds.			4926
Structural Steel	Lbs.	1,848,580		1,848,580
Aluminum Handrail	Lin. Ft.	2,166		2,166
Reinforcement Bars	Lbs.	250,610	43,110	293,720
Untreated Piles	Lin. Ft.		3,886	3,886
Crossed Piles	Lin. Ft.		2,550	2,550
Test Piles (Timber)	Each		2	2
Metal Shell Piles-12"	Lin. Ft.		4,999	4,999
Test Piles (Metal Shell)	Each		6	6
Metal Shell Piles-14"	Lin. Ft.		1,012	1,012
Name Plates	Each	1		1
Slope Wall G	Sq. Yds.			6,079
Class A Concrete	Cu. Yds.		738.4	738.4
Bridge Seal Sealant	L. Yds.			Lump Sum
Class X Concrete Encasement	Cu. Yds.		65.1	65.1

* Includes excavation for slope wall.

STATION 544+27
BUILT 196 BY
STATE OF ILLINOIS
F.A.I. RT. 70 - SEC. 26-3B-1(2)
PROJ. I-70-2(6)G3
LOADING H2O-316 & ALT.

NAME PLATE
See Std. 2113

WATERWAY INFORMATION

Drainage Area: (Total) 1,289,421 Acres

Character: Rolling, cultivated

Category	Area (Acres)	Volume (Cu. Ft.)
Required Opening: Below H.P. 483.0 (L. v. H.P.)	16,000	39, Ft.
Present Opening: Below H.P. 483.0 (L. v. H.P.)	13,550	39, Ft.
Proposed Opening: Below H.P. 483.0 (L. v. H.P.)	13,550	39, Ft.
Future req'd. opening with Shelbyville Dam & Levee reconstr. (By Corp. Engineers)	20,700	39, Ft.
Future proposed opening with Shelbyville Dam & Levee reconstr. (By Corp. Engineers)	20,700	39, Ft.

TOTAL: 17,900 Sq. Ft. (Levee over top), 19,550 Sq. Ft., 19,550 Sq. Ft.

CAMP CREEK: 1,900 Sq. Ft. (Levee over top), 6,800 Sq. Ft., 6,200 Sq. Ft. (36" ch.), 2,200 Sq. Ft. (local drainage only), 2,200 Sq. Ft. (local drainage only).

DESIGN STRESSES

12 - 1,400 p.s.i. Super & Sub.
13 - 20,000 p.s.i. Reinfr.
13 - 20,000 p.s.i. Struct. (A-36)
vc - 75 p.s.i. Figs. 1-10
LOADING H2O-316-44 & ALT.

PROJECT I-70-2(6)G3
GENERAL PLAN & ELEVATION
KASKASKIA RIVER
F.A.I. RT. 70 - SEC. 26-3B-1(2)
FAYETTE COUNTY
STATION 544+27

DESIGNED	R.K.T. wylor	EXAMINED	W.E. Beaumont
CHECKED	P.H. Vargason	PASSED	W.E. Beaumont
DRAWN	K.X.T. ni jacobz	APPROVED	W.E. Beaumont
CHECKED	P.H. Vargason		

JUNE 6 1963