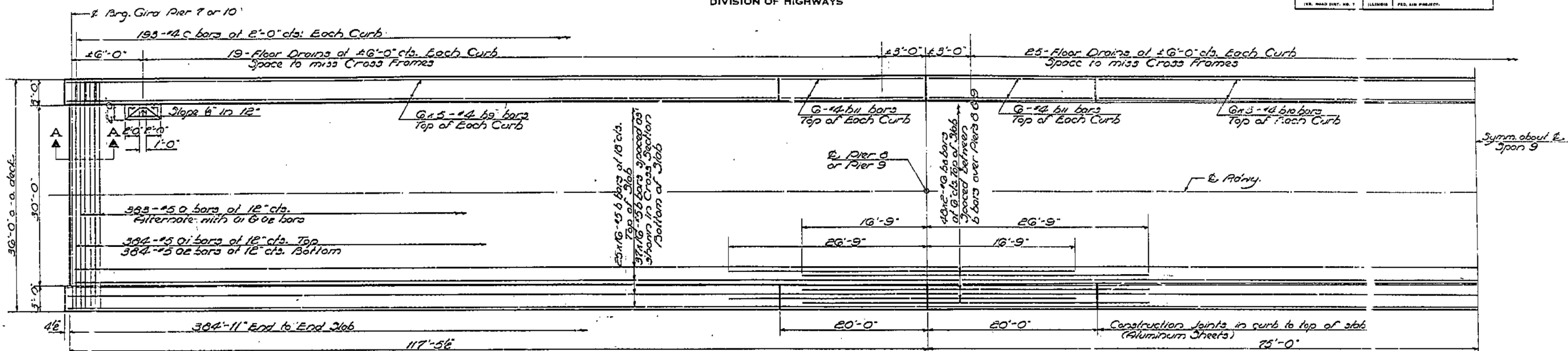


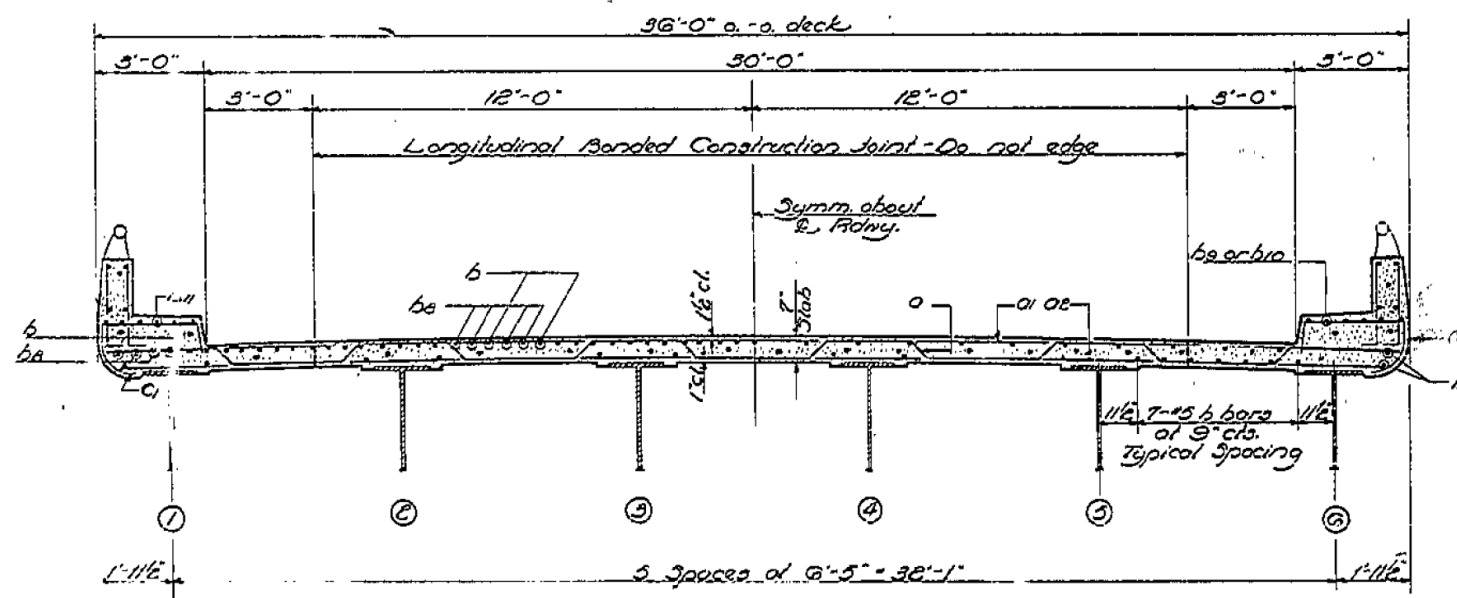
Note: Bars indicated plus 10 or 5 etc. indicates 20 lines of bars with 3 lengths per line. Min. bar laps = 20 dia.

STATE OF ILLINOIS
DEPARTMENT OF PUBLIC WORKS & BUILDINGS
DIVISION OF HIGHWAYS

ROUTE NO.	SPRINT	COUNTY	TOTAL SHEETS	SHEET NO.
26-3	10	FAYETTE	36	10
30 SHEETS				



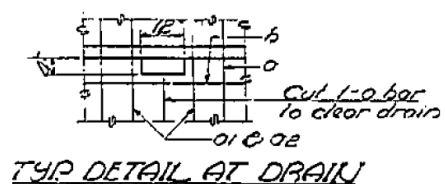
HALF PLAN



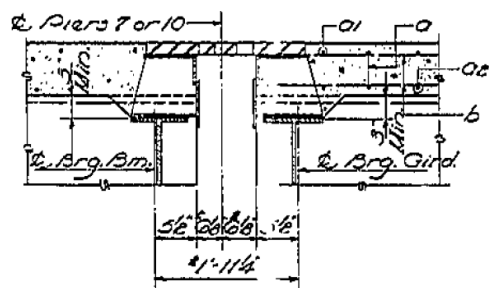
NEAR PIER

NEAR MIDSPAN

CROSS SECTION

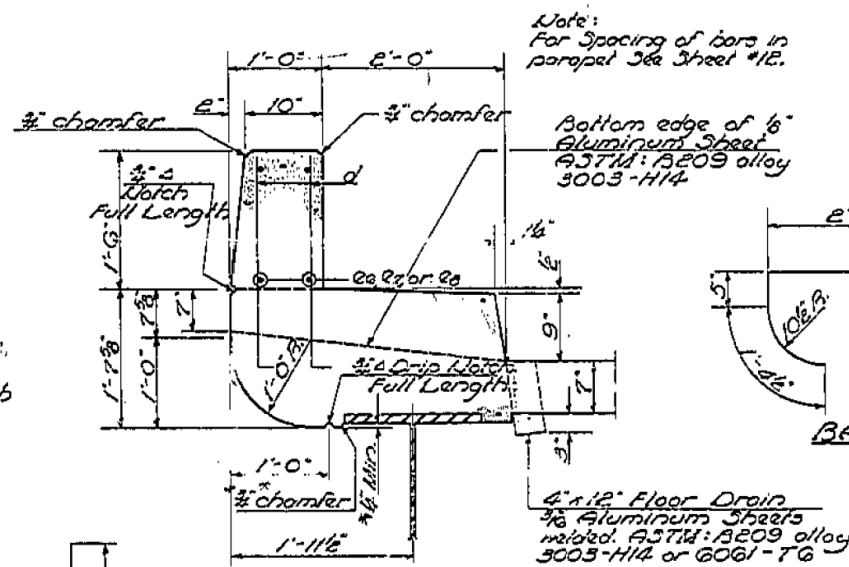


TYP. DETAIL AT DRAIN



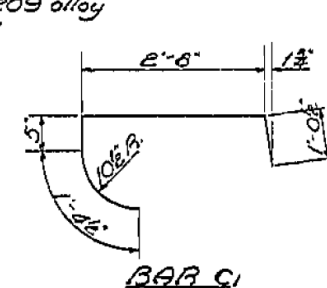
SECTION 3-A

* Dimension is shown at 50°F. Varies with temperature.



CURB DETAIL

Cost of aluminum sheets & drains shall be incidental to Class A Conc. * See Chamfer Detail Sheet #E



BAR d

STANDARD FILLET DETAIL

To determine 't': After all structural steel has been erected elevations of the top flanges of the beams shall be taken at intervals shown on sheet. These elevations subtracted from the 'Grade Elevations Adjusted for Dead Load Deflections' shown on sheet, minimum slab thickness, equals the fillet height 't' above top of beams.

GIRDER SPANS

FILL OF MATERIAL

QTY	NO.	SIZE	LENGTH	SHAPE
0	383	15	37'-3"	∩
0	384	15	35'-0"	∩
0	384	15	35'-0"	∩
b	992	15	26'-0"	∩
bx	192	16	22'-6"	∩
bx	120	14	20'-3"	∩
b10	60	14	22'-9"	∩
b11	48	14	19'-6"	∩
ct	586	74	5'-6"	∩
d	1704	15	8'-9"	∩
ea	80	15	19'-3"	∩
et	32	15	19'-9"	∩
es	48	15	18'-1"	∩

Class A Concrete Curb 1203
Reinforcement Bars Lbs 3140
* Structural Steel 1.65 52450

* Weight of Bearing Assemblies are included as Structural Steel. Est. Wt. = 16,900 *

SUPERSTRUCTURE
GIRDER SPANS
F.A.I.R.T. 70-SEC. 26-3B-1(2)
FAYETTE COUNTY
STA. 544 + 27

DESIGNED	R. V. Taylor	EXAMINED	W. E. Baumann
CHECKED	M. E. Blumhagen	PASSED	E. J. ...
DRAWN	M. E. Blumhagen	APPROVED	J. E. ...
CHECKED	M. E. Blumhagen		

JUNE 6 1963



USER NAME	has	DESIGNED	ELH	REVISED	-
ESCA PROJECT NO.	1000.05	DRAWN	HAS	REVISED	-
PLOT SCALE	0.1667 / IN.	CHECKED	ROP	REVISED	-
PLOT DATE	1/29/2014	DATE	08/13	REVISED	-

STATE OF ILLINOIS
DEPARTMENT OF TRANSPORTATION

STRUCTURE NO. 026-0018 EXISTING BRIDGE PLANS
WB - FOR INFORMATION ONLY

SCALE: SHEET NO. 6 OF 28 SHEETS STA. TO STA.

F.A.I.R.T.	SECTION	COUNTY	TOTAL SHEETS	SHEET NO.
70	(26-3B-1, 3B-1(3))BR	FAYETTE	277	199
CONTRACT NO. 74175			FED. ROAD DIST. NO. ILLINOIS FED. AID PROJECT	