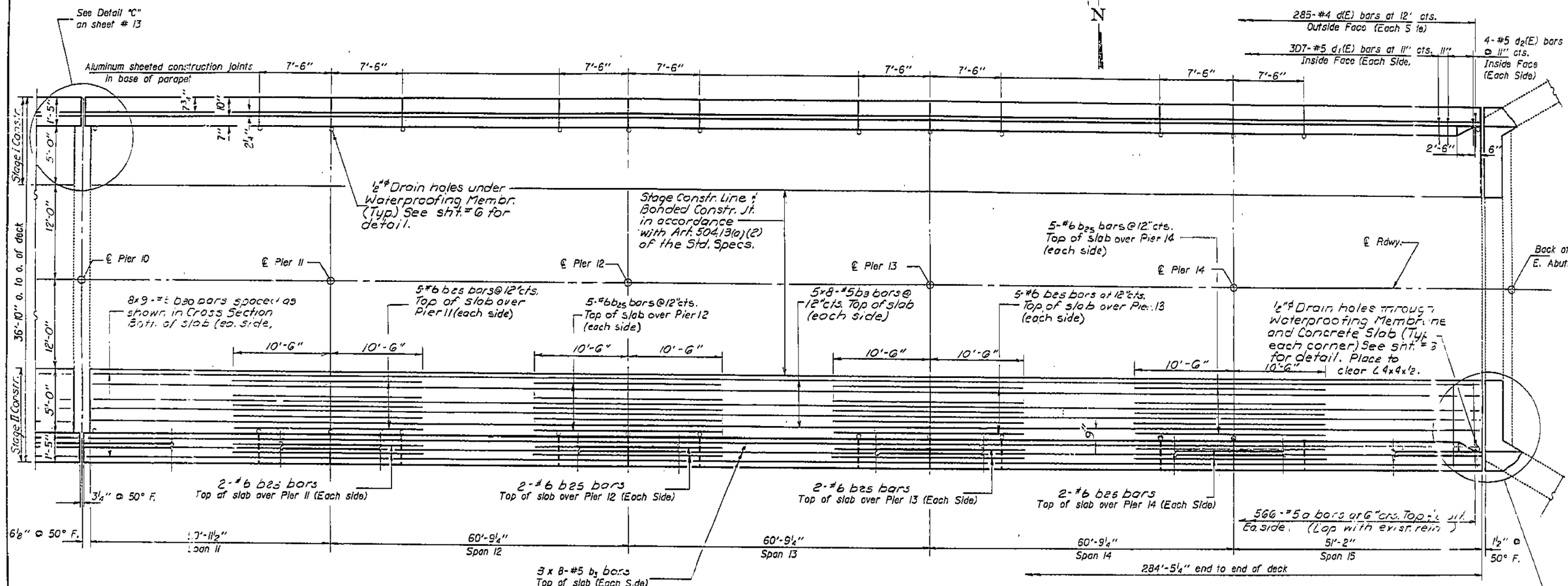


STATE OF ILLINOIS
DEPARTMENT OF TRANSPORTATION

ROUTE NO.	SECTION	COUNTY	TOTAL SHEETS	SHEET NO.	SHEET NO. 8
F.A.I. 70	(26-3B-1)	FAYETTE	277	12	15 SHEETS
FED. ROAD DIST. NO.	ILLINOIS	FED. AID PROJECT			

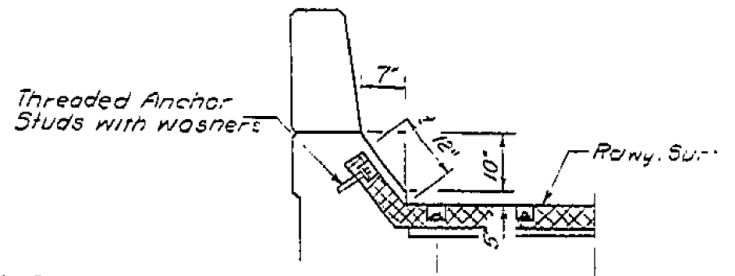


PLAN - UNIT IV

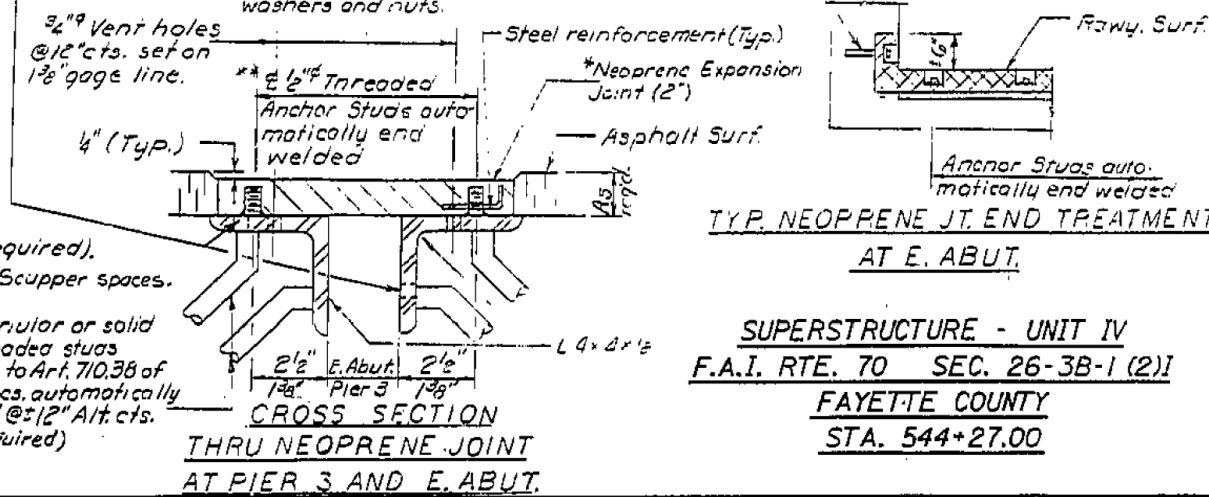
* Extend Neoprene Expansion Jt. into base of parapet from last manufactured lap in Jt. Use FEIT SPAN MODEL T30-1 1/2-S (Fel-Pro Building Products, Inc.) or a Neoprene Exp. Jt. of equivalent size and dimensions

Notes:
See sheet #10 for superstructure details and Bill of Material.
Reinforcement bars designated (E) shall be epoxy coated.
Bars indicated thus 20 x 3-#5 etc. indicates 20 lines of bars with 3 lengths per line.
See sheet # 9 for Parapet Elevation
Existing reinforcement extending into the new concrete shall be cleaned and incorporated into the new concrete, (2'-2" min. embedment required).
See sheet # 1 for Floor Drain and Drainage Scupper spaces.
See sheet # 5 for Cross Section.

* Cut bars as necessary to miss scuppers and floor drains.
** Stainless Steel granular or solid flux filled threaded studs conforming to ASTM A-193 with stainless steel washers and nuts.



TYP. NEOPRENE JT. END TREATMENT AT PIER 3



CROSS SECTION THRU NEOPRENE JOINT AT PIER 3 AND E. ABUT.

TYP. NEOPRENE JT. END TREATMENT AT E. ABUT.

SUPERSTRUCTURE - UNIT IV
F.A.I. RTE. 70 SEC. 26-3B-1 (2) I
FAYETTE COUNTY
STA. 544+27.00

DESIGNED	ELH
CHECKED	David Burt
DRAWN	mercado
CHECKED	DE

EXAMINED	James J. Johnson
PASSED	James J. Johnson
APPROVED	James J. Johnson

MIN. BAR LAPS
#5 bars 2'-2"

STATE OF ILLINOIS
DEPARTMENT OF TRANSPORTATION

STRUCTURE NO. 026-0018 EXISTING BRIDGE PLANS
WB - FOR INFORMATION ONLY

F.A.I. RTE.	SECTION	COUNTY	TOTAL SHEETS	SHEET NO.
70	(26-3B-1, 3B-1(3))BR	FAYETTE	277	217
FED. ROAD DIST. NO.	ILLINOIS	FED. AID PROJECT		



USER NAME = has	DESIGNED - ELH	REVISED -
ESCA PROJECT NO. 1000.05	DRAWN - HAS	REVISED -
PLOT SCALE = 0.1667' / IN.	CHECKED - RDP	REVISED -
PLOT DATE = 1/29/2014	DATE - 08/13	REVISED -

SCALE: SHEET NO. 24 OF 28 SHEETS STA. TO STA.