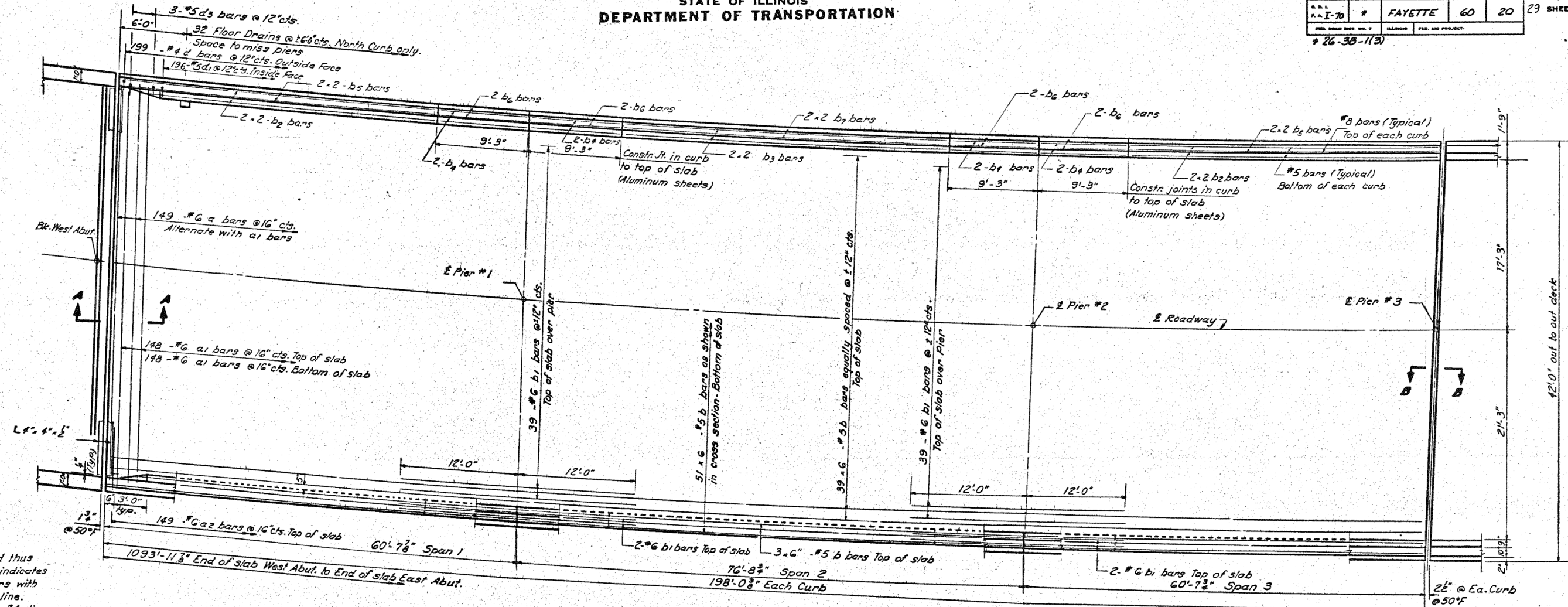


STATE OF ILLINOIS
DEPARTMENT OF TRANSPORTATION

ROUTE NO.	SECTION	COUNTY	TOTAL SHEETS	SHEET NO.	SHEET NO. 2
A.A. I-70	#	FAYETTE	60	20	29 SHEETS
# 26-3B-1(3)					



Notes:

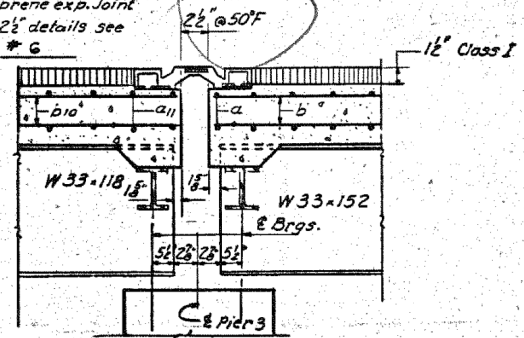
Bars indicated thus 20-3-#5 etc. indicates 20 lines of bars with 3 lengths per line. Min. bar laps - 24 dia.

For Floor Drain detail see Sheet # 12. For details of bars a, az, d, d1/d3 see sheet # 10

For Sec. A-A see sheet # 11

For Curb Section see sheet # 9

For neoprene exp. joint type 2 1/2\"/>



SECTION B-B
(At Pier #3)

DESIGNED	R.K. Mattuz
CHECKED	James Ponce
DRAWN	Simon Ustarihu
CHECKED	JP

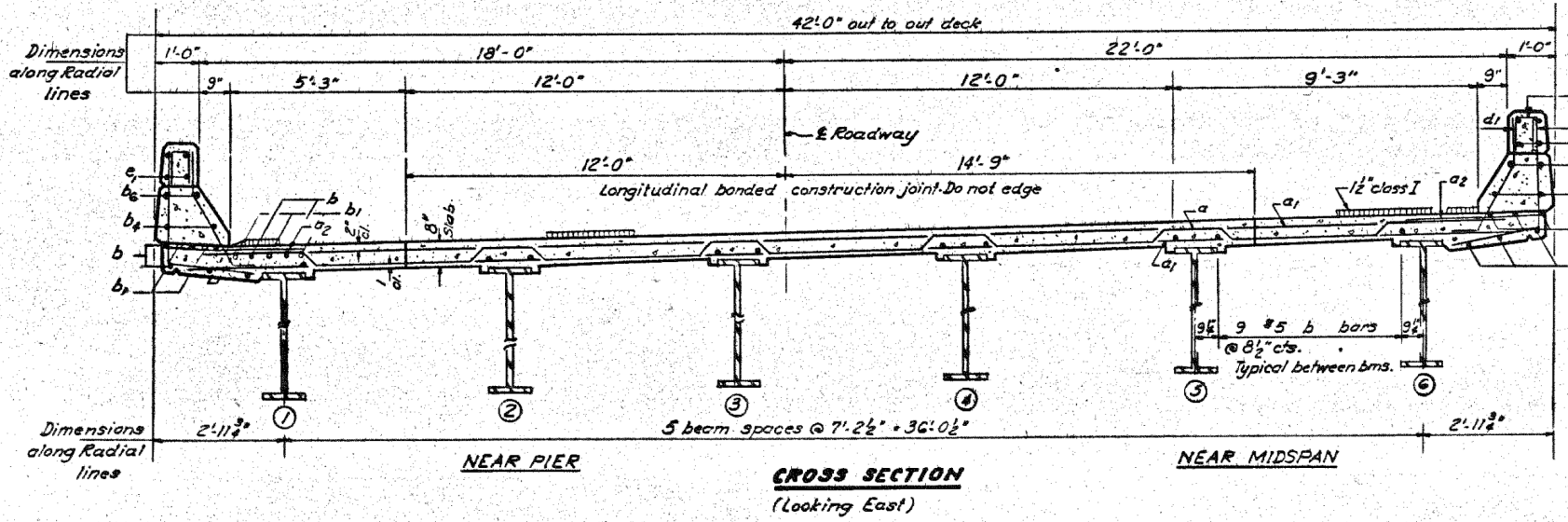
EXAMINED
PASSED
Richard H. Holterman

PLAN
(All dimensions along the inside face of parapet)

BILL OF MATERIAL

Bar No.	Size	Length	Shape
a	149 #6	41'-10"	~
a1	296 #6	40'-0"	—
a2	296 #6	41'-0"	—
b	576 #5	34'-0"	—
b1	86 #6	24'-0"	—
b2	16 #5	26'-3"	—
b3	8 #5	29'-9"	—
b4	16 #5	9'-0"	—
b5	16 #8	26'-9"	—
b6	16 #8	9'-0"	—
b7	8 #8	30'-0"	—
d	398 #4	4'-9"	┘
d1	392 #5	3'-7"	┘
d3	6 #5	4'-3"	┘
Class X Concrete		Cu. Yds.	246.5
Reinforcement Bars		Lbs.	58210

Parapet Reinforcement (Class X Concrete are billed on sheet # 13)



Note: For placement of bars dz thru ez see sheet # 13

SUPERSTRUCTURE-SPANS 1, 2 & 3
R.A.I.R.T. 70 SEC. 26-3B-1(3)EBL
FAYETTE COUNTY
STA. 543A+92.91



USER NAME = has	DESIGNED - ELH	REVISED -
ESCA PROJECT NO. 1000.05	DRAWN - HAS	REVISED -
PLOT SCALE = 0.1667' / IN.	CHECKED - RDP	REVISED -
PLOT DATE = 1/29/2014 2:13:39 PM	DATE - 08/13	REVISED -

STATE OF ILLINOIS
DEPARTMENT OF TRANSPORTATION

STRUCTURE NO. 026-0085 EXISTING BRIDGE PLANS
EB - FOR INFORMATION ONLY

SCALE: SHEET NO. 2 OF 23 SHEETS STA. TO STA.

F.A.I. RTE.	SECTION	COUNTY	TOTAL SHEETS	SHEET NO.
70	(26-3B-1, 3B-1(3))BR	FAYETTE	277	223
CONTRACT NO. 74175				
FED. ROAD DIST. NO. ILLINOIS FED. AID PROJECT				