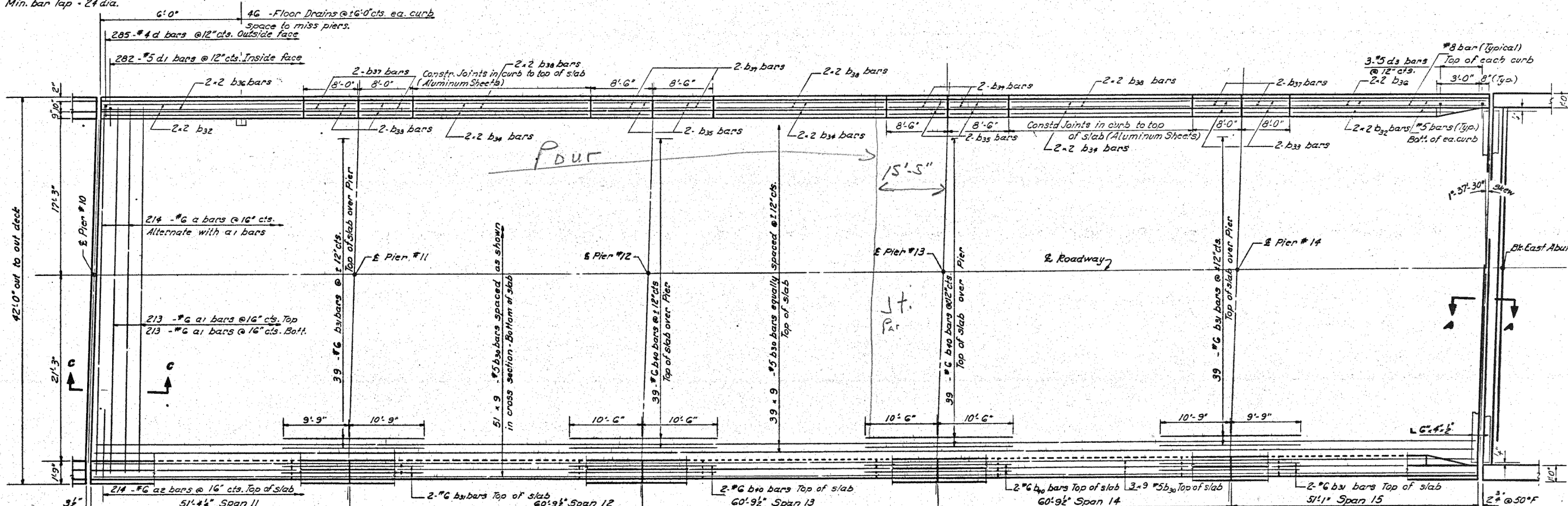


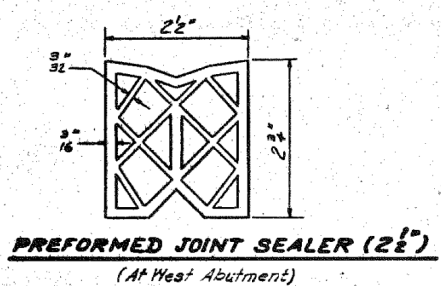
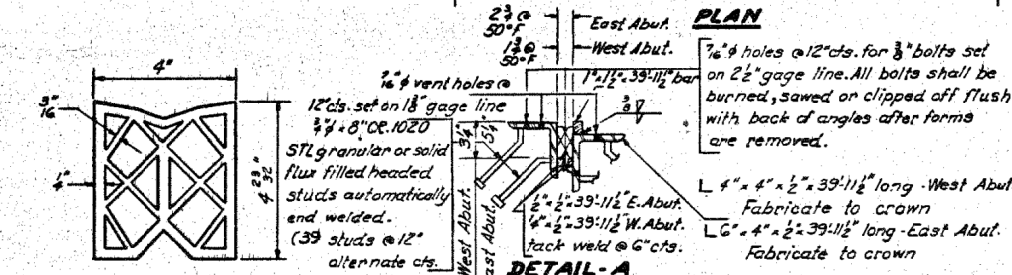
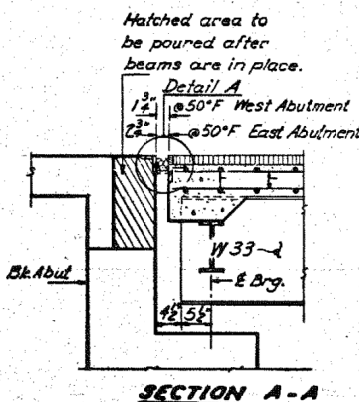
STATE OF ILLINOIS
DEPARTMENT OF TRANSPORTATION

ROUTE NO.	SECTION	COUNTY	TOTAL SHEETS	SHEET NO.	SHEET NO. 11
26-3B-1	#	FAYETTE	60	23	29 SHEETS
# 26-3B-1(3)					

Note:
Bars indicated thus 20-3-#5 etc.
indicates 20 lines of bars with 3
lengths per line.
Min. bar lap = 24 dia.



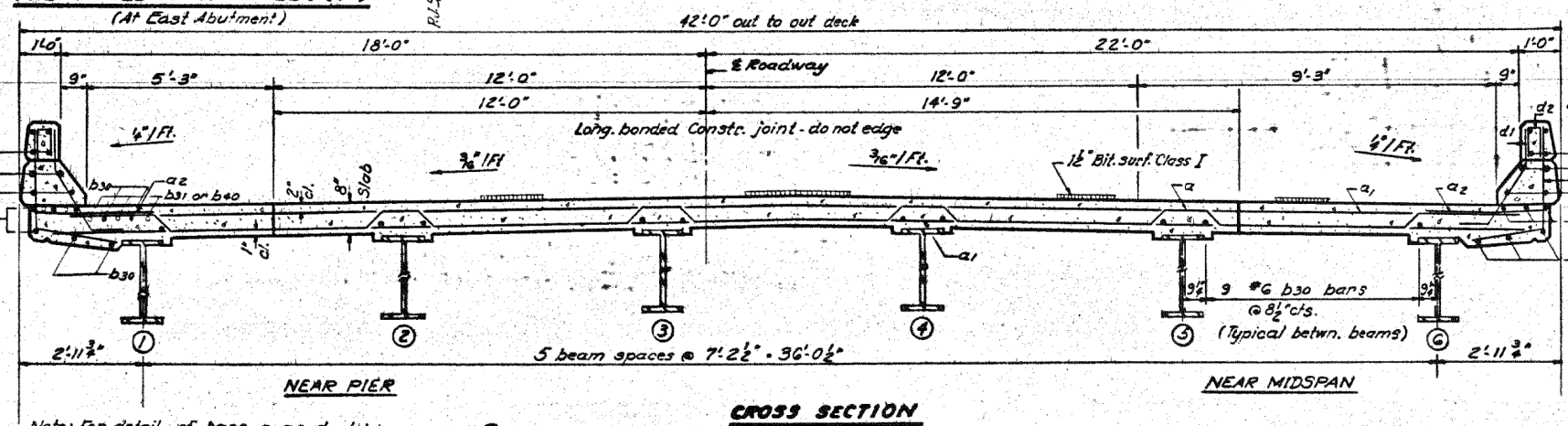
Notes:
For Section C-C see sheet # 10
For Floor Drain detail see sheet # 12



BILL OF MATERIAL

Bar No.	Size	Length	Shape
a	214 #6	41'-10"	~
a1	#26 #6	40'-0"	~
a2	#28 #6	4'-0"	~
b30	864 #5	33'-0"	~
b31	86 #6	20'-6"	~
b32	16 #5	22'-3"	~
b33	16 #5	7'-9"	~
b34	24 #5	23'-3"	~
b35	16 #5	8'-3"	~
b36	16 #8	22'-9"	~
b37	16 #8	7'-9"	~
b38	24 #8	23'-6"	~
b39	16 #8	8'-3"	~
b40	86 #6	21'-0"	~
d	570 #4	4'-9"	~
d1	564 #5	3'-7"	~
d3	6 #5	4'-3"	~
Class I Concrete Cu.Yds. 345.3			
Reinforcement Bars Lbs. 85030			

Note:
For placement of bars d2 and
e2 thru e9 see sheet # 13



Note: For detail of bars a, a2, d, d1/d2 see sheet # 10
For Curb Section See sheet # 9

DESIGNED *R. K. Mathur*
CHECKED *James Puce*
DRAWN *Simon H. Stambic*
CHECKED *JP*

EXAMINED *[Signature]*
PASSED *[Signature]*
DATE: July 20, 1972



USER NAME = has
ESCA PROJECT NO. 1000.05
PLOT SCALE = 0.1667 / IN.
PLOT DATE = 1/30/2014 6:40:12 AM

DESIGNED - ELH
DRAWN - HAS
CHECKED - RDP
DATE - 08/13

STATE OF ILLINOIS
DEPARTMENT OF TRANSPORTATION

STRUCTURE NO. 026-0085 EXISTING BRIDGE PLANS
EB - FOR INFORMATION ONLY

SCALE: SHEET NO. 5 OF 23 SHEETS STA. TO STA.

F.A.I. RTE.	SECTION	COUNTY	TOTAL SHEETS	SHEET NO.
70	(26-3B-1, 3B-1(3))BR	FAYETTE	277	226
CONTRACT NO. 74175				
FED. ROAD DIST. NO. ILLINOIS FED. AID PROJECT				

*Parapet Reinforcement # Class I
Concrete are billed on sheet 13

SUPERSTRUCTURE SPANS
11, 12, 13, 14 & 15
F.A.I. RT. TO SEC. 26-3B-1(3)EBL
FAYETTE COUNTY
STA. 543A + 92.91