

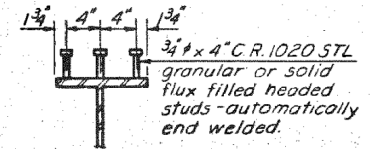
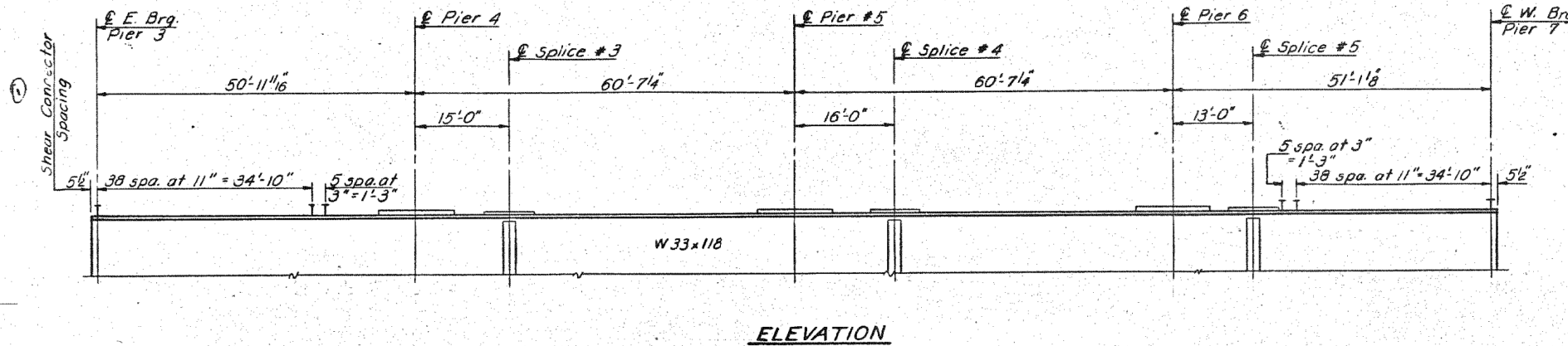
STATE OF ILLINOIS
DEPARTMENT OF TRANSPORTATION

ROUTE NO.	SECTION	COUNTY	TOTAL SHEETS	SHEET NO.
F.A.I. RT. 70	26-3B-1	FAYETTE	60	28
SHEET NO. 16				
29 SHEETS				

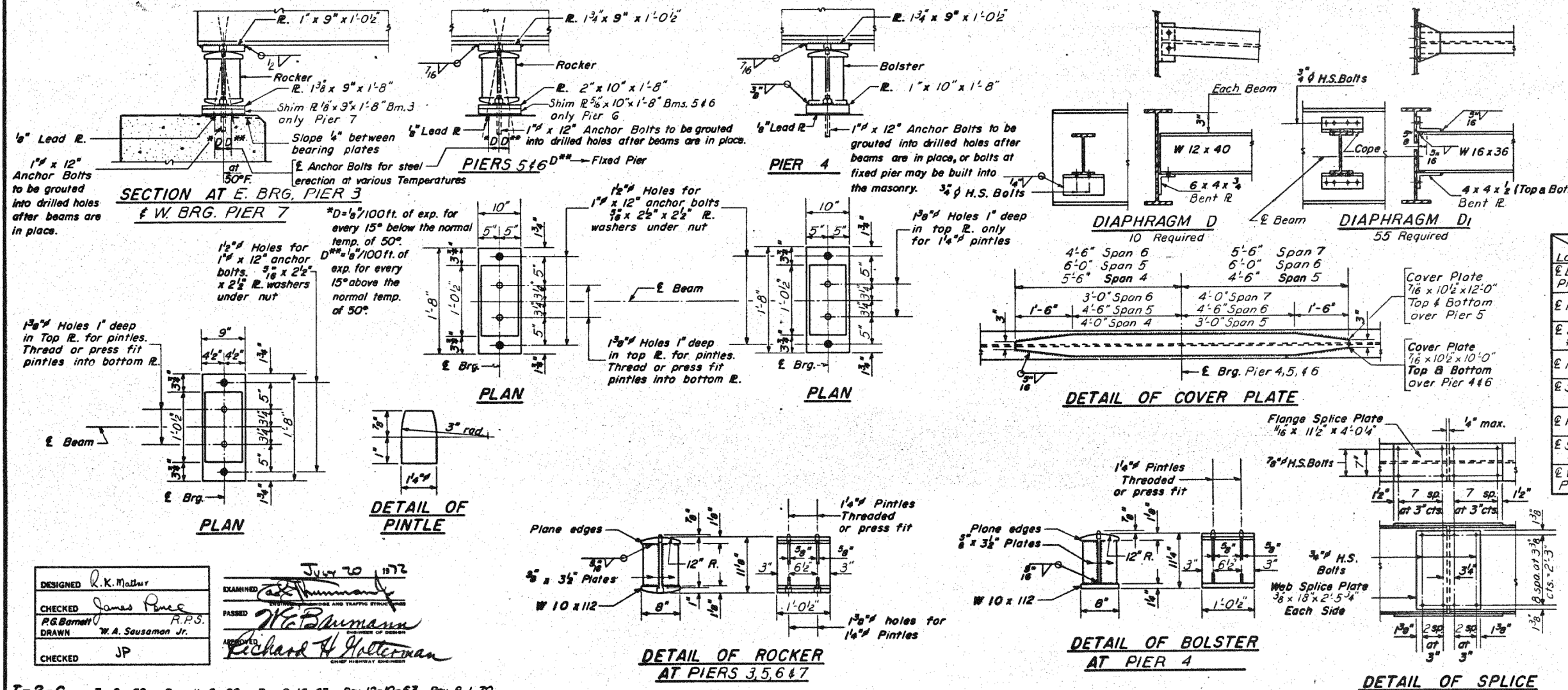
	0.4 Sp. 4	Pier 4	0.5 Sp. 5	Pier 5
I_s (in ⁴)	5900	8446	5900	8446
I_c (in ⁴)	15933			
S_s (in ³)	359	514	359	514
S_c (in ³)	530			
Q (K/ft)	0.863	1.317	1.317	1.317
M_e (K)	160	434	179	419
f_{s_e} (KSI)	5.4	10.1	6	9.8
$S_{\bar{Q}}$ (K/ft)	0.454			
M_{s_e} (K)	91			
$M_{\bar{Q}}$ (K)	369	270	308	300
M_{imp} (K)	105	74	83	79
TOTAL (K)	565	344	391	379
$f_{s_{\bar{Q}+S_e}}$ (KSI)	12.8	8.1	13.1	8.8
$f_{s_{TOTAL}}$ (KSI)	18.2	18.2	19.1	18.6
VR (K)	69.2			

	Pier 3	Pier 4	Pier 5
R_e (K)	25.8	82.5	-79.3
$R_{\bar{Q}}$ (K)	37.5	45.2	45.7
Imp. (K)	10.3	12.5	12.3
R_{TOTAL} (K)	73.6	140.2	137.3

I_s and S_s are the moment of inertia and section modulus of the steel section.
 I_c and S_c are the moment of inertia and section modulus of the composite section used in computing f_s .
VR is the maximum $\bar{Q} +$ Impact shear range in span.



SHEAR CONNECTORS
264 Req'd Each Beam



Beam Loc.	1	2	3	4	5	6
E. Brg. Pier 3	497.195	497.479	497.771	498.059	498.347	498.636
E. Pier 4	497.323	497.587	497.848	498.075	498.301	498.519
E. Splice #3	497.365	497.620	497.870	498.084	498.287	498.484
E. Pier 5	497.499	497.726	497.943	498.091	498.217	498.331
E. Splice #4	497.548	497.764	497.969	498.095	498.193	498.277
E. Pier 6	497.665	497.842	498.015	498.074	498.099	498.101
E. Splice #5	497.699	497.865	498.028	498.068	498.071	498.050
E. W. Brg. Pier 7	497.806	497.959	498.093	498.078	498.014	497.923

DESIGNED: R.K. Madsen
CHECKED: James Pines
DRAWN: W.A. Sausamon Jr.
EXAMINED: [Signature]
PASSED: [Signature]
DATE: July 20, 1972

I-2-C 7-2-62 Rev. 11-9-62 Rev. 8-16-63 Rev. 12-10-63 Rev. 8-1-70



USER NAME = has	DESIGNED - ELH	REVISED -
ESCA PROJECT NO. 1000.05	DRAWN - HAS	REVISED -
PLOT SCALE = 0.1667' / IN.	CHECKED - RDP	REVISED -
PLOT DATE = 1/29/2014	DATE - 08/13	REVISED -

STATE OF ILLINOIS
DEPARTMENT OF TRANSPORTATION

STRUCTURE NO. 026-0085 EXISTING BRIDGE PLANS
EB - FOR INFORMATION ONLY
SCALE: SHEET NO. 10 OF 23 SHEETS STA. TO STA.

F.A.I. RTE.	SECTION	COUNTY	TOTAL SHEETS	SHEET NO.
70	(26-3B-1, 3B-1(3))BR	FAYETTE	277	231
CONTRACT NO. 74175				
FED. ROAD DIST. NO. ILLINOIS FED. AID PROJECT				