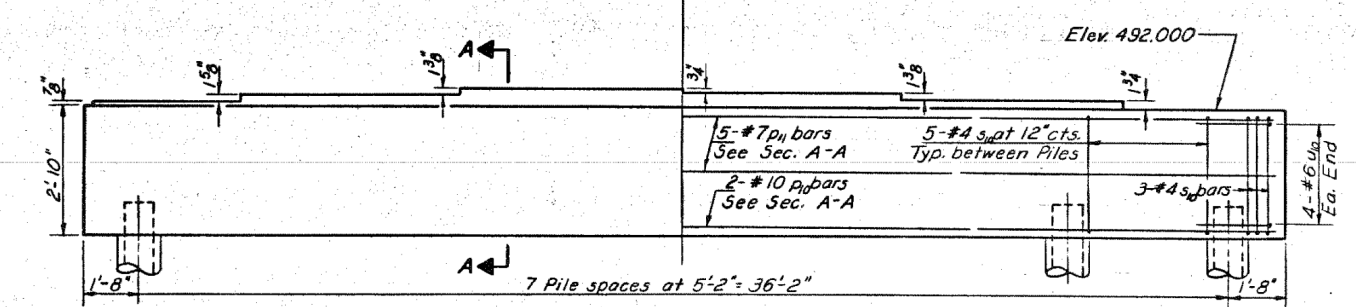
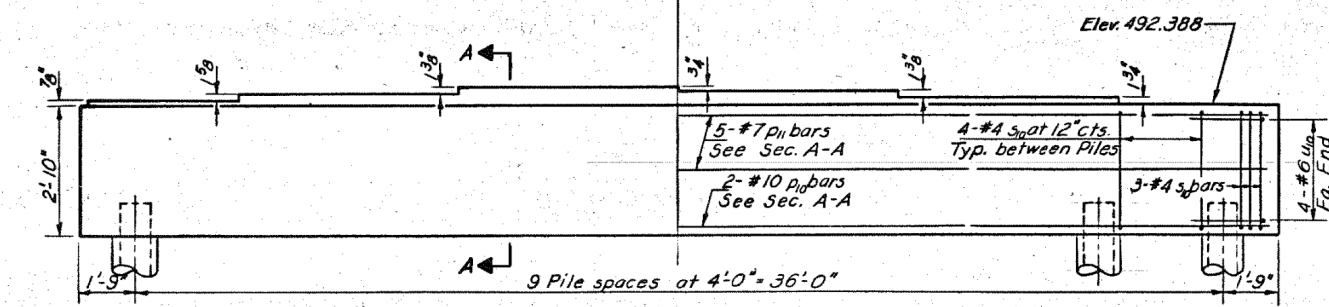
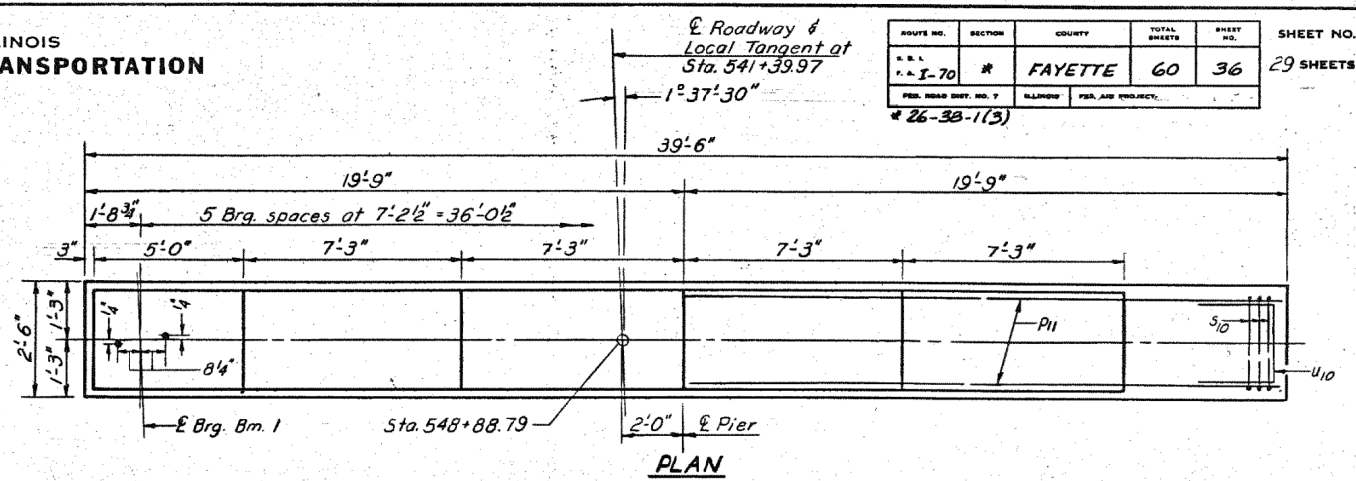
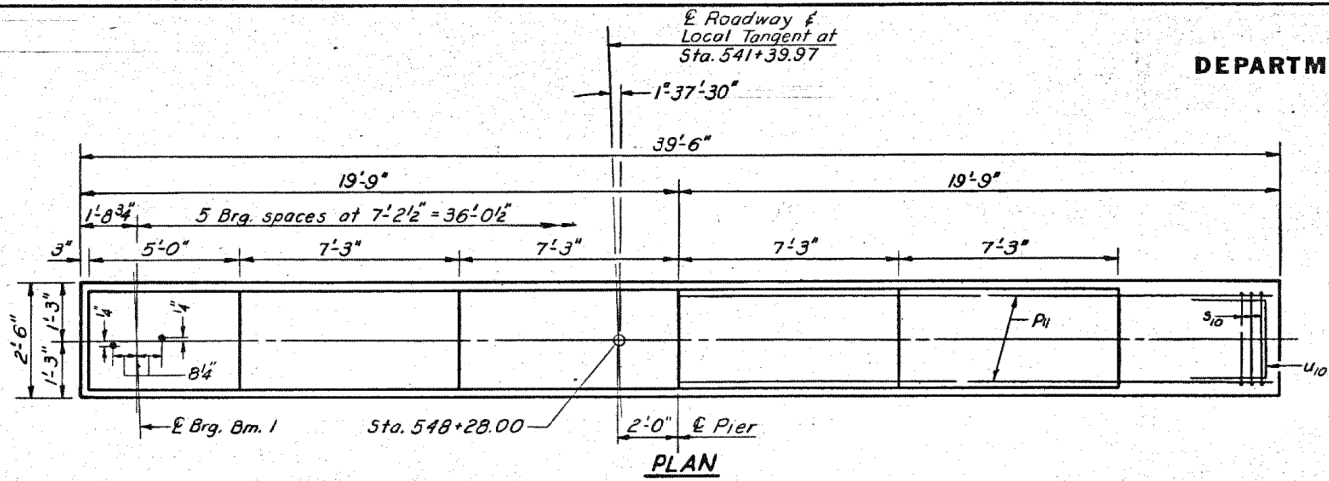


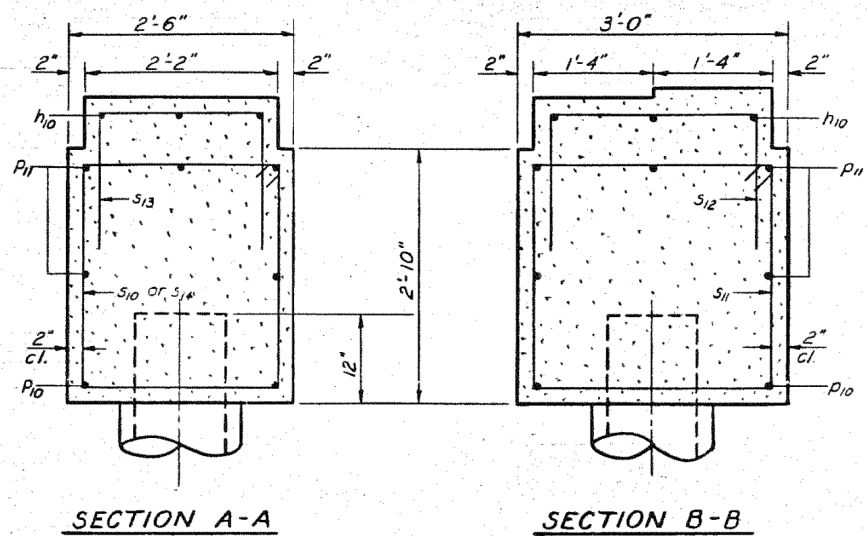
STATE OF ILLINOIS
DEPARTMENT OF TRANSPORTATION

ROUTE NO.	SECTION	COUNTY	TOTAL SHEETS	SHEET NO.	SHEET NO. 24
F.A.I. 70	*	FAYETTE	60	36	29 SHEETS
* 26-3B-1(3)					



ELEVATION PIER 13
Looking East

ELEVATION PIER 14
Looking East



SECTION A-A

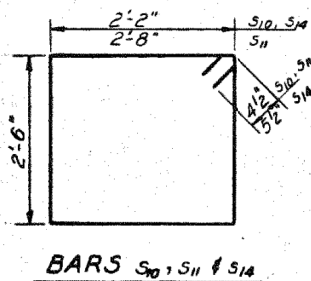
SECTION B-B

PILE DATA

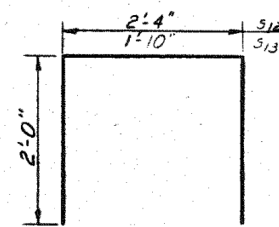
Pier No.	Type	Capacity	Length	No. Req'd.
1	Metal Shell (16")	45 Tons	70'	9+1 Test Pile
2	Metal Shell (16")	45 Tons	68'	10
3	Metal Shell (16")	45 Tons	68'	7+1 Test Pile
4	Metal Shell (16")	37 Tons	66'	10
5	Metal Shell (16")	45 Tons	72'	7+1 Test Pile
6	Metal Shell (16")	45 Tons	70'	8
11	Metal Shell (16")	45 Tons	78' 6"	8
12	Metal Shell (16")	45 Tons	78' 6"	8
13	Metal Shell (16")	37 Tons	78' 6"	9+1 Test Pile
14	Metal Shell (16")	45 Tons	78' 5"	8

TEN PIERS
BILL OF MATERIAL

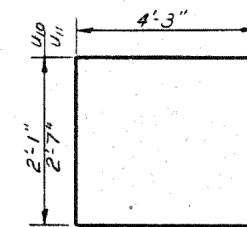
Bar No.	No.	Size	Length	Shape
n0	12	#5	19'-3"	—
p10	20	#10	39'-3"	—
p11	50	#7	39'-3"	—
s10	289	#4	10'-1"	□
s11	41	#4	11'-1"	□
s12	20	#4	6'-4"	□
s13	60	#4	5'-10"	□
s14	64	#5	10'-3"	□
u10	72	#6	10'-7"	□
u11	8	#6	11'-1"	□
Class X Concrete			Cu. Yds.	115.2
Reinforcement: Bars			Lbs.	12370
Metal Shell			Lbs.	6001
Test Piles (Metal Shell)			Each	4
Class X Concrete Encasement			Cu. Yds.	164.8



BARS s10, s11 & s14



BARS s12 & s13



BARS u10 & u11

PIERS 13 & 14
F.A.I. RT. 70 SEC. 26-3B-1(3) E.B.L.
FAYETTE COUNTY
STATION 543A+9291

DESIGNED	R. K. Mathur
CHECKED	James Ponce
DRAWN	R. P. Summer
CHECKED	JP

EXAMINED	July 20 1972
PASSED	Richard A. Holterman
APPROVED	Richard A. Holterman

PRINT DRIVER: LEO-LEBARON
SCALE: 1/8" = 1'-0"
FILE NAME: D:\P275\10000275.dwg



USER NAME = has	DESIGNED - ELH	REVISED -
ESCA PROJECT NO. 1000.05	DRAWN - HAS	REVISED -
PLOT SCALE = 0.1667 / IN.	CHECKED - RDP	REVISED -
PLOT DATE = 1/29/2014 2:17:28 PM	DATE - 08/13	REVISED -

STATE OF ILLINOIS
DEPARTMENT OF TRANSPORTATION

STRUCTURE NO. 026-0085 EXISTING BRIDGE PLANS
EB - FOR INFORMATION ONLY

SCALE: SHEET NO. 18 OF 23 SHEETS STA. TO STA.

F.A.I. RT. 70	SECTION (26-3B-1, 3B-1(3))BR	COUNTY FAYETTE	TOTAL SHEETS 277	SHEET NO. 239
CONTRACT NO. 74175			FED. ROAD DIST. NO. ILLINOIS FED. AID PROJECT	