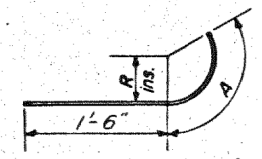
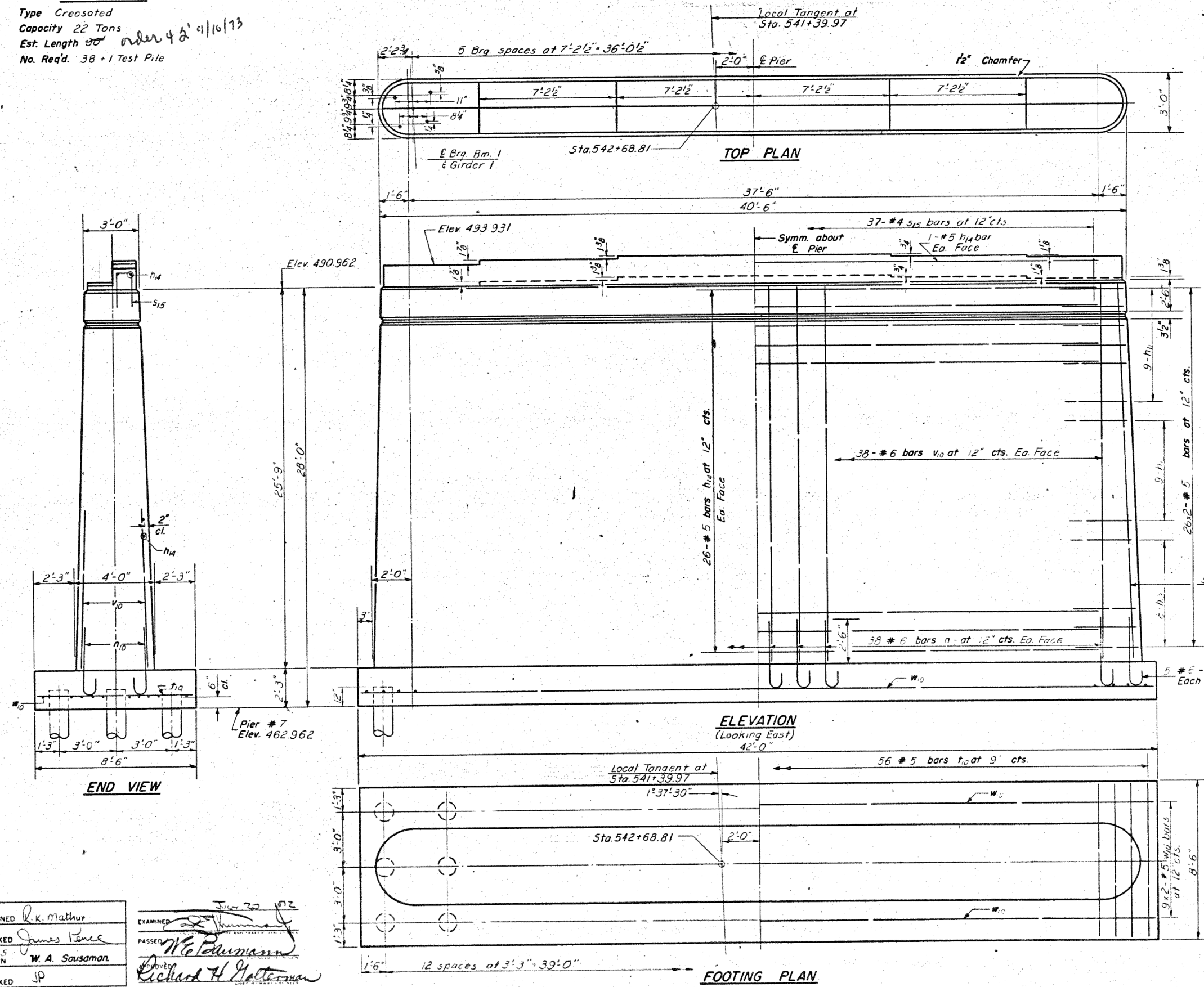


STATE OF ILLINOIS  
DEPARTMENT OF TRANSPORTATION

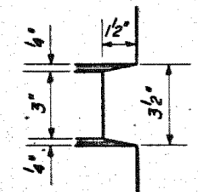
ROUTE NO.	SECTION	COUNTY	TOTAL SHEETS	SHEET NO.	SHEET NO. 25
F.A. I-70	#	FAYETTE	60	37	29 SHEETS
*26-3B-1(3)					

**PILE DATA**  
Type Creosoted  
Capacity 22 Tons  
Est. Length  $30'$  order 4/21/10/13  
No. Req'd. 38 + 1 Test Pile

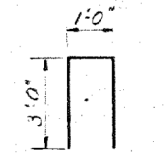


**DETAIL OF BARS**

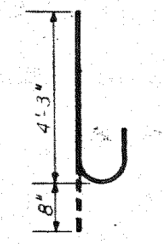
Bar	R	A
$h_{11}$	1'-4"	2'-2"
$h_{12}$	1'-6"	3'-0"
$h_{13}$	1'-8"	3'-4"



NOTCH DETAIL



BAR s15



BAR n10

**BILL OF MATERIAL**

Bar	No.	Size	Length	Shape
$h_{11}$	36	#5	4'-2"	U
$h_{12}$	36	#5	4'-6"	U
$h_{13}$	32	#5	4'-10"	U
$h_{14}$	54	#5	37'-6"	—
$n_{10}$	26	#6	4'-11"	C
s15	37	#3	7'-0"	□
t10	56	#5	8'-3"	—
v10	86	#6	25'-6"	—
w10	18	#5	22'-6"	—
Class A Concrete		Cu. Yds.	109.8	
Reinforcement Bars		Lbs.	72.0	
Creosoted Piles		Lbs.	1142	
Test Piles (Timber)		Each	1	

**PIER 7**  
F.A. I. RT. 70 SEC. 26-3B-1(3) E.B.L.  
FAYETTE COUNTY  
STATION 543A+92.91

DESIGNED: R.K. Mathur  
CHECKED: James Pence  
DRAWN: W.A. Sousaman  
EXAMINED: [Signature]  
PASSED: [Signature]  
APPROVED: Richard H. Halterman

P-1 Re-drawn 7-21-59 Rev. 11-25-59



USER NAME = has	DESIGNED - ELH	REVISED -
ESCA PROJECT NO. 1000.05	DRAWN - HAS	REVISED -
PLOT SCALE = 0.1667' / IN.	CHECKED - RDP	REVISED -
PLOT DATE = 1/29/2014	DATE - 08/13	REVISED -

STATE OF ILLINOIS  
DEPARTMENT OF TRANSPORTATION

STRUCTURE NO. 026-0085 EXISTING BRIDGE PLANS  
EB - FOR INFORMATION ONLY

SCALE: SHEET NO. 19 OF 23 SHEETS STA. TO STA.

F.A.I. RTE.	SECTION	COUNTY	TOTAL SHEETS	SHEET NO.
70	(26-3B-1, 3B-1(3))BR	FAYETTE	277	240
CONTRACT NO. 74175				
FED. ROAD DIST. NO. ILLINOIS FED. AID PROJECT				