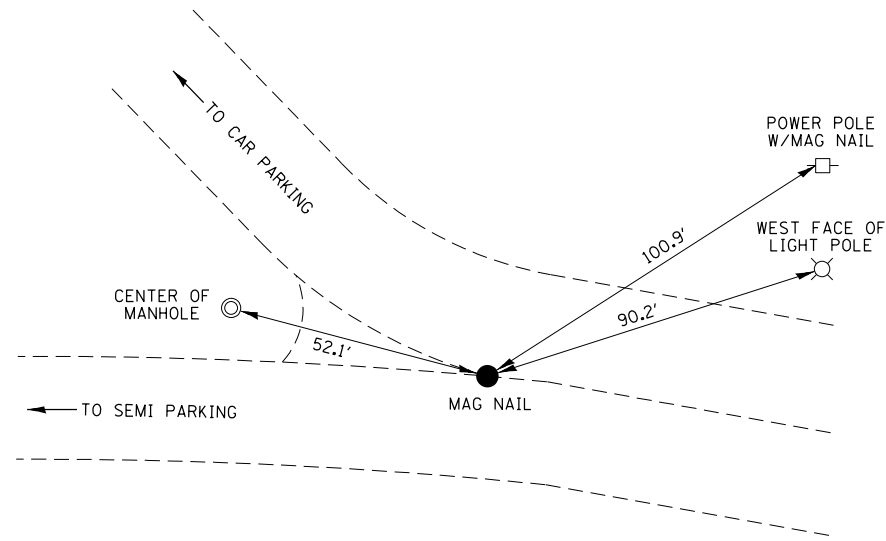
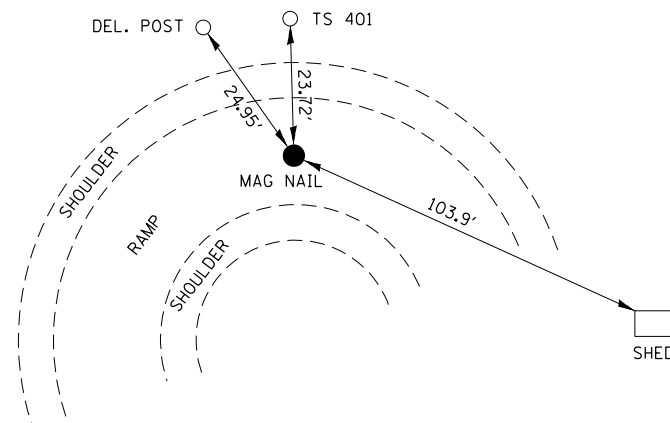


P.O.T. STA. 200+00 (#144) =
P.I. STA. 112+97.02 (#1100)
(NORTH SIDE - WEST BOUND)



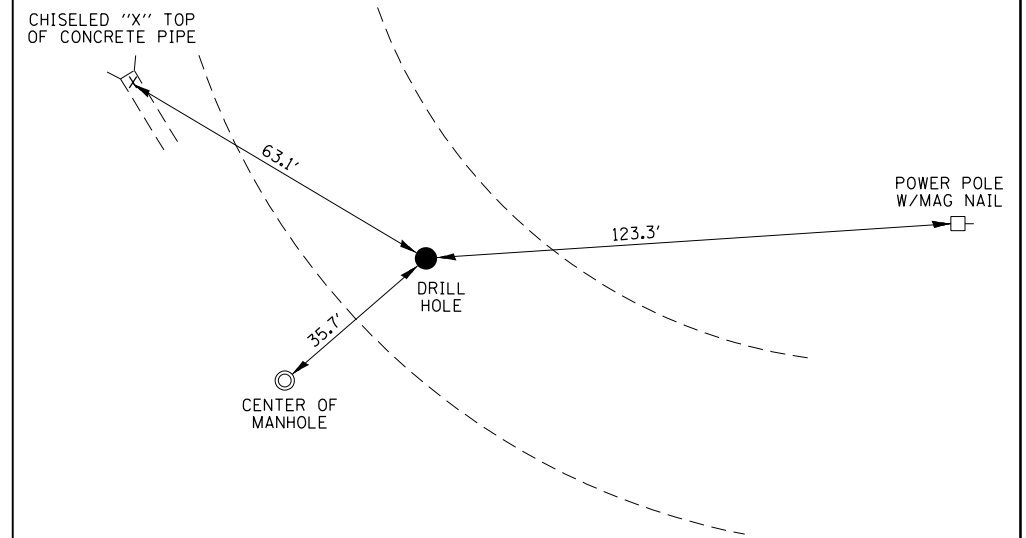
NOTE: NOT TO SCALE

P.C.C. STA. 206+97.59 (#128)
(NORTH SIDE - WEST BOUND)



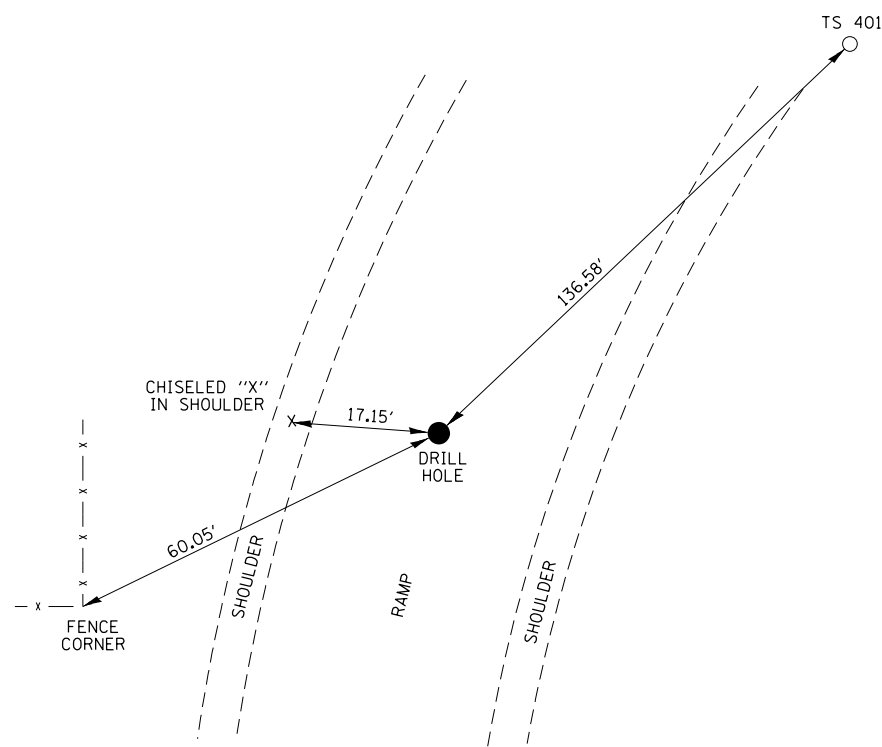
NOTE: NOT TO SCALE

P.C. STA. 200+72.08 (#123)
(NORTH SIDE - WEST BOUND)



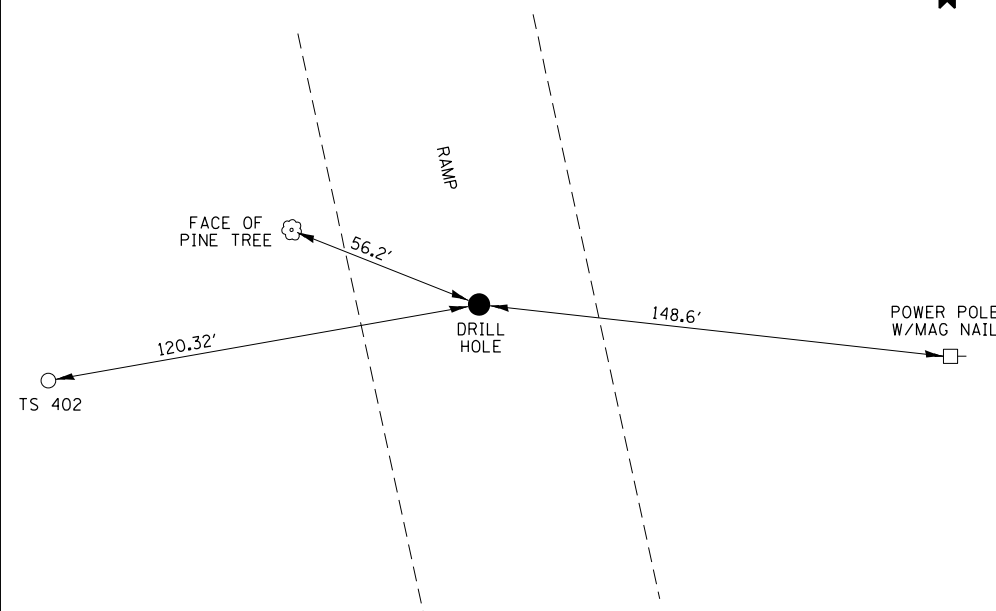
NOTE: NOT TO SCALE

P.C.C. STA. 208+44.65 (#131)
(NORTH SIDE - WEST BOUND)



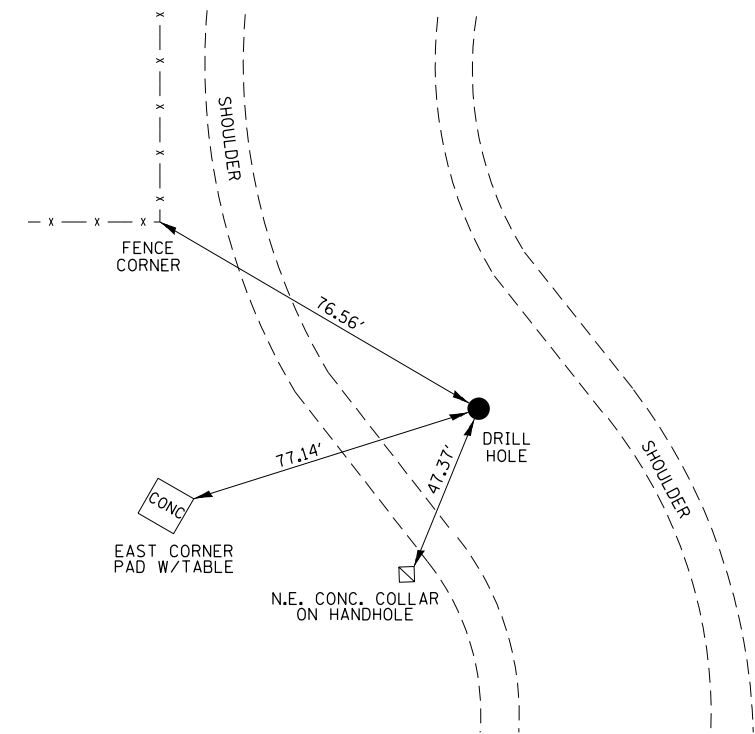
NOTE: NOT TO SCALE

P.R.C. STA. 203+68.77 (#125)
(NORTH SIDE - WEST BOUND)



NOTE: NOT TO SCALE

P.R.C. STA. 209+40.40 (#148)
(NORTH SIDE - WEST BOUND)



NOTE: NOT TO SCALE

FILE NAME =	USER NAME = steffenmk	DESIGNED -	REVISED -
c:\pwork\pwork\dot\steffenmk\dms67466\074284-sht-ties.dgn		DRAWN -	REVISED -
Default	PLOT SCALE = 100.0000' / in.	CHECKED -	REVISED -
	PLOT DATE = 1/28/2014	DATE -	REVISED -

STATE OF ILLINOIS
DEPARTMENT OF TRANSPORTATION

TIE POINTS
WEST BOUND I-72 REST AREA

SCALE: N/A SHEET 2 OF 4 SHEETS STA. TO STA.

F.A.I. RTE.	SECTION	COUNTY	TOTAL SHEETS	SHEET NO.
72	(58-66)RA-I-1	MACON	56	11
ILLINOIS FED. AID PROJECT			CONTRACT NO. 74284	