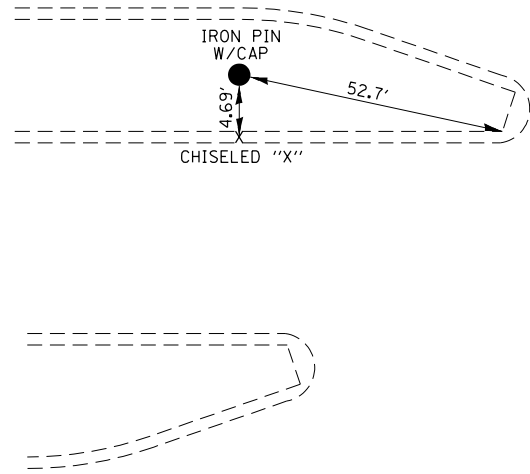
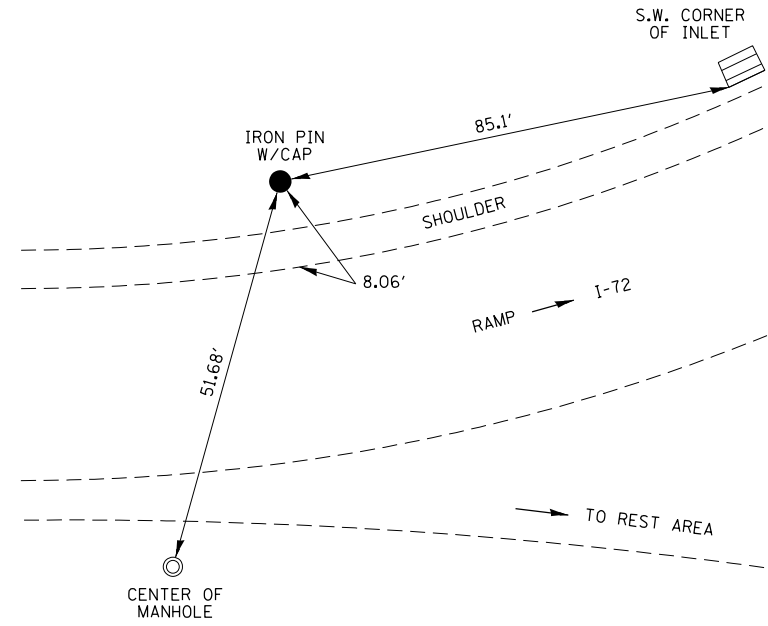


TRA. STA. 403  
(SOUTH SIDE - EAST BOUND)



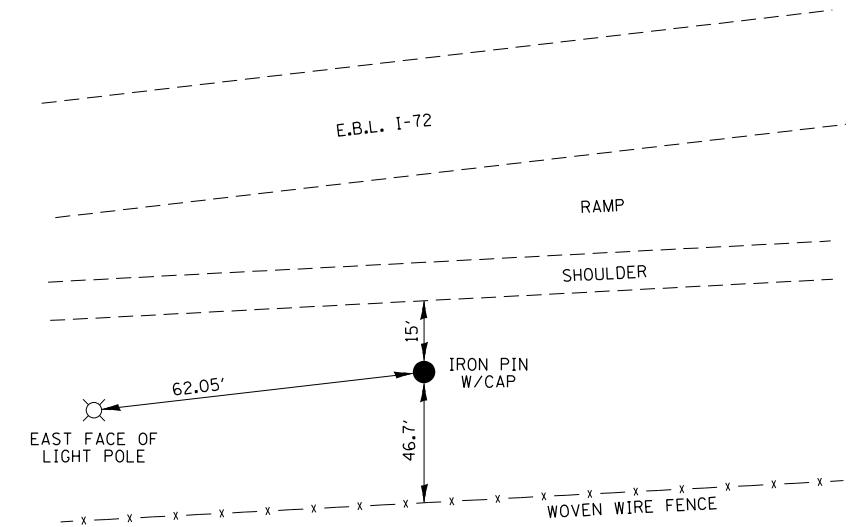
NOTE: NOT TO SCALE

TRA. STA. 404  
(SOUTH SIDE - EAST BOUND)



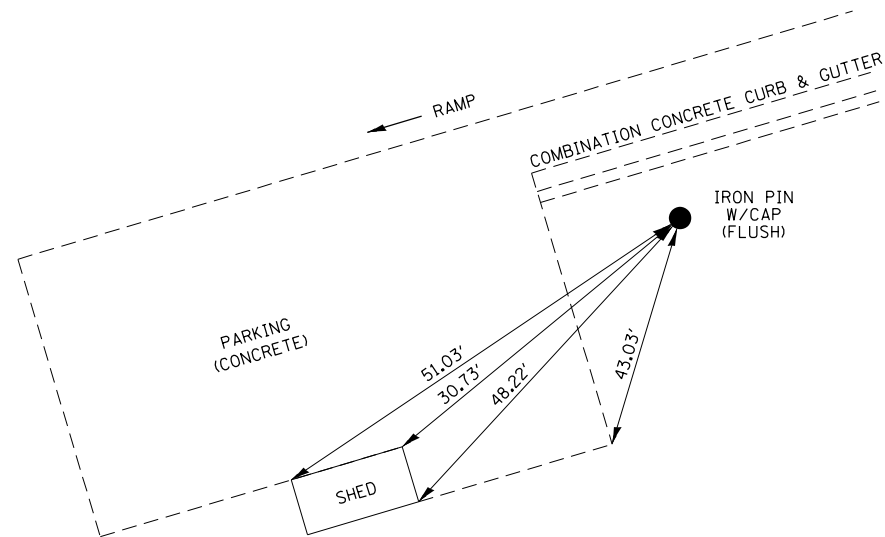
NOTE: NOT TO SCALE

TRA. STA. 405  
(SOUTH SIDE - EAST BOUND)



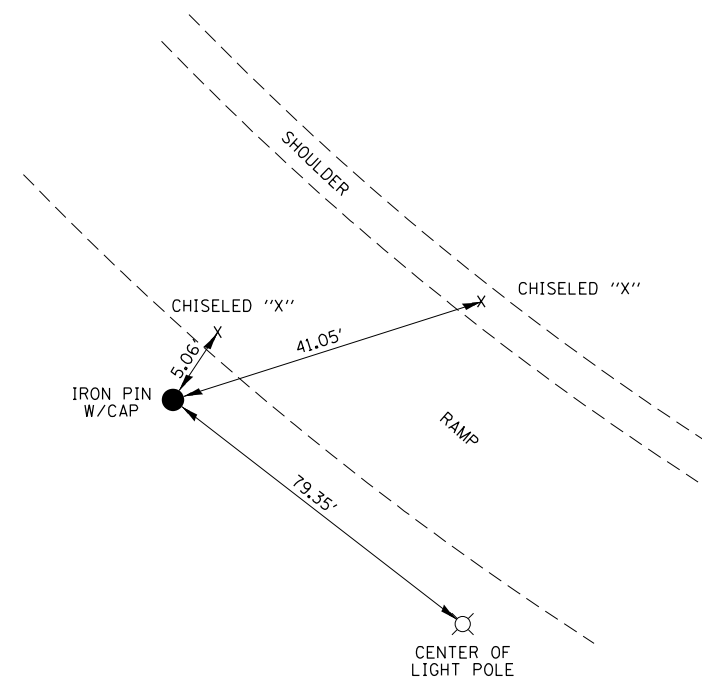
NOTE: NOT TO SCALE

TRA. STA. 406  
(SOUTH SIDE - EAST BOUND)



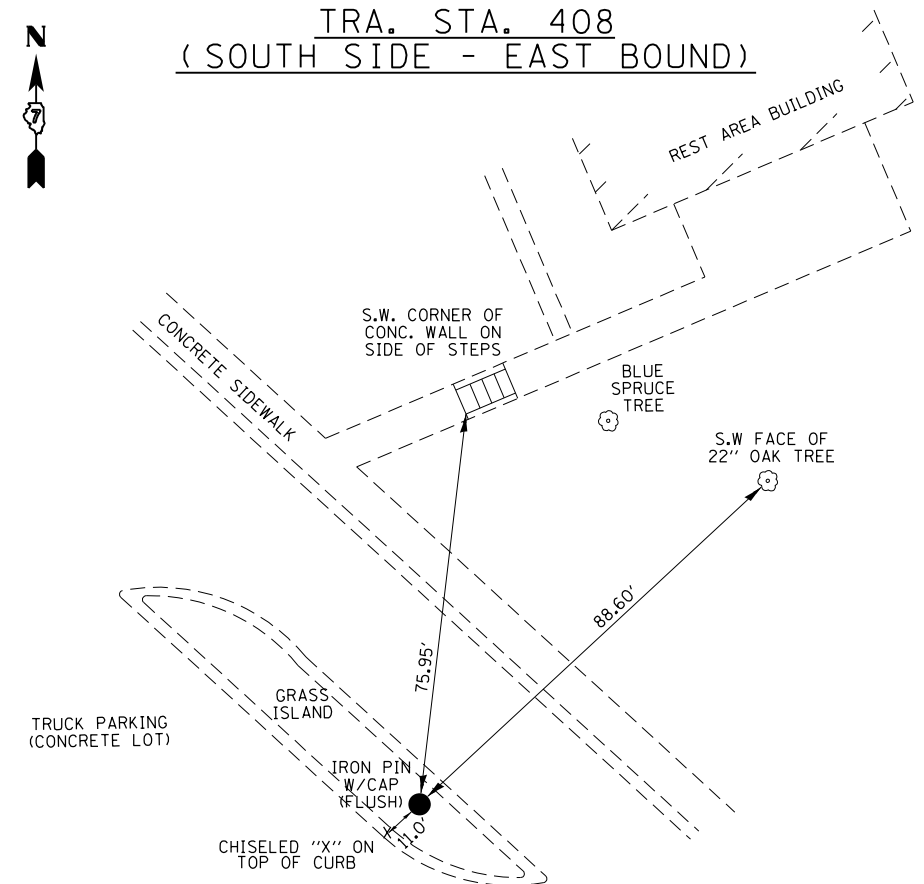
NOTE: NOT TO SCALE

TRA. STA. 407  
(SOUTH SIDE - EAST BOUND)



NOTE: NOT TO SCALE

TRA. STA. 408  
(SOUTH SIDE - EAST BOUND)



NOTE: NOT TO SCALE

FILE NAME =	USER NAME = steffernk	DESIGNED -	REVISED -
c:\pw\work\p\dot\steffernk\dms67466\0774284-sht-ties.dgn		DRAWN -	REVISED -
	PLOT SCALE = 100.0000' / in.	CHECKED -	REVISED -
Default	PLOT DATE = 1/28/2014	DATE -	REVISED -

STATE OF ILLINOIS  
DEPARTMENT OF TRANSPORTATION

TIE POINTS  
EAST BOUND I-72 REST AREA

SCALE: N/A SHEET 3 OF 4 SHEETS STA. TO STA.

F.A.I. RTE.	SECTION	COUNTY	TOTAL SHEETS	SHEET NO.
72	(58-66)RA-I-1	MACON	56	12
CONTRACT NO. 74284				
ILLINOIS FED. AID PROJECT				