
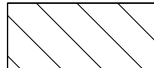


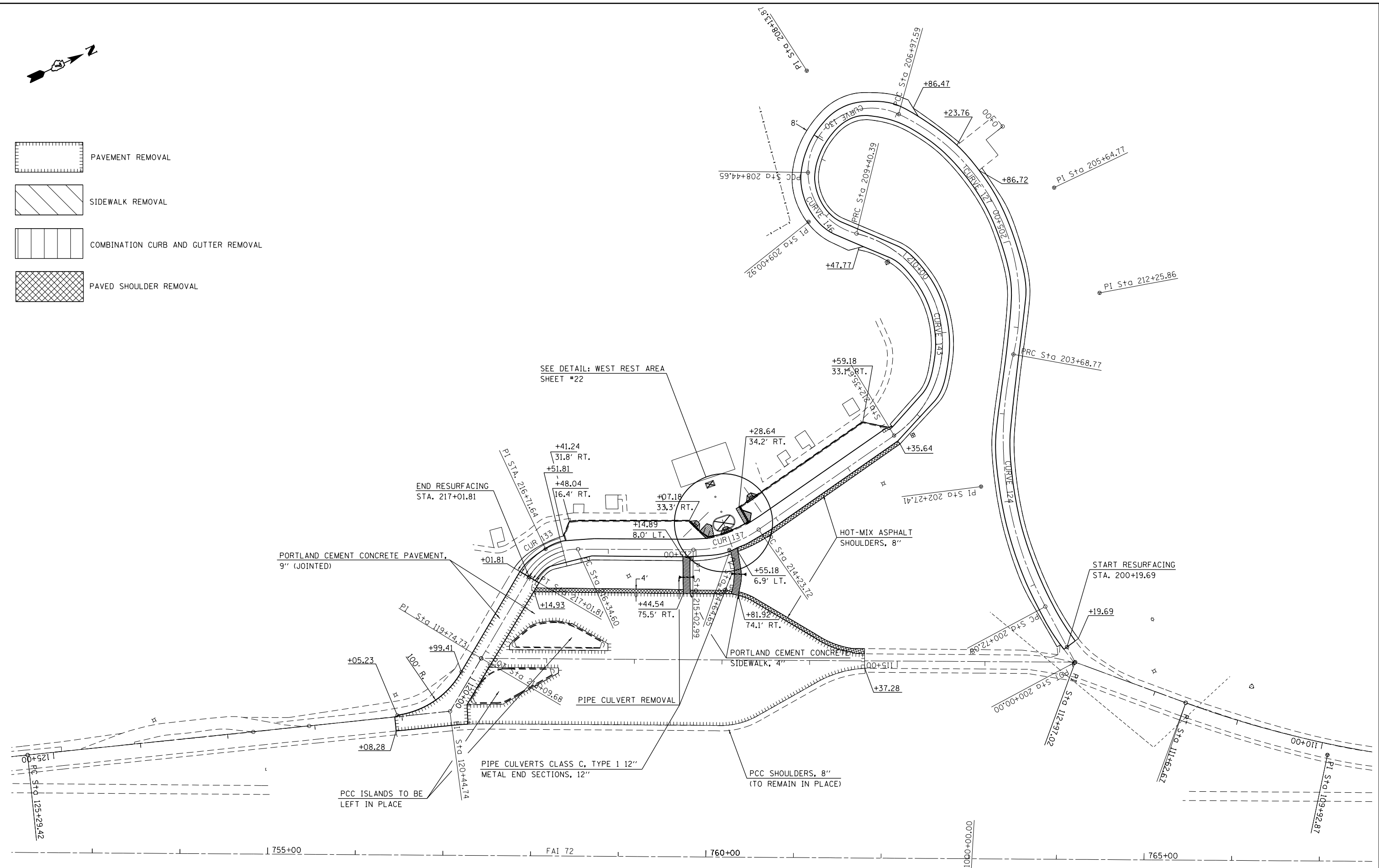


-  PAVEMENT REMOVAL
-  SIDEWALK REMOVAL
-  COMBINATION CURB AND GUTTER REMOVAL
-  PAVED SHOULDER REMOVAL



FILE NAME =	USER NAME = steffenmk	DESIGNED -	REVISED -	STATE OF ILLINOIS DEPARTMENT OF TRANSPORTATION	PLAN WESTBOUND REST AREA			F.A.I. RTE.	SECTION	COUNTY	TOTAL SHEETS	SHEET NO.
ci:\pw\work\p\dot\stevfenmk\dms67466\0774284-sht-plan.dgn		DRAWN -	REVISED -		72	(58-66)RA-1-1	MACON	56	15	CONTRACT NO. 74284		
Default	PLOT SCALE = 100.0000' / in.	CHECKED -	REVISED -		SCALE: 50	SHEET 1	OF 2 SHEETS	STA.	TO STA.	ILLINOIS FED. AID PROJECT		
	PLOT DATE = 1/28/2014	DATE -	REVISED -									