

STATE OF ILLINOIS
DEPARTMENT OF TRANSPORTATION
DIVISION OF HIGHWAYS

**PROPOSED
HIGHWAY PLANS**

F.A.I. ROUTE 70 (I-70)
SECTION 3-5RS-3
PROJECT ACNHPP-0070(401)
BOND COUNTY
C-98-061-13

F.A.I. RTE.	SECTION	COUNTY	TOTAL SHEETS	SHEET NO.
70	3-5RS-3	BOND	54	1
FED. ROAD DIST. NO.	ILLINOIS	CONTRACT NO. 76D21		

FOR INDEX OF SHEETS, GENERAL NOTES
AND STANDARDS SEE SHEET NO. 2

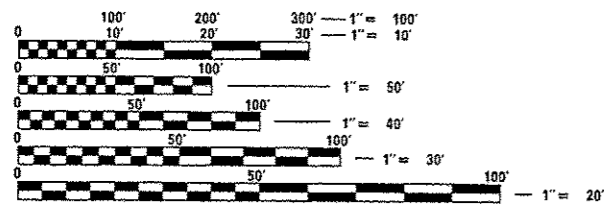
TRAFFIC DATA

FAI 70 (FROM B.N.S.F. RAILROAD TO FAYETTE COUNTY LINE)
2013 ADT= 20,700 2014 ADT= 20,900
2010 ADT= 25,500 SU=5.5% MU=38.7%

TR 161 (Over FAI 70)
TRAPPER AVE.
SN 003-0045
2010 ADT= 150

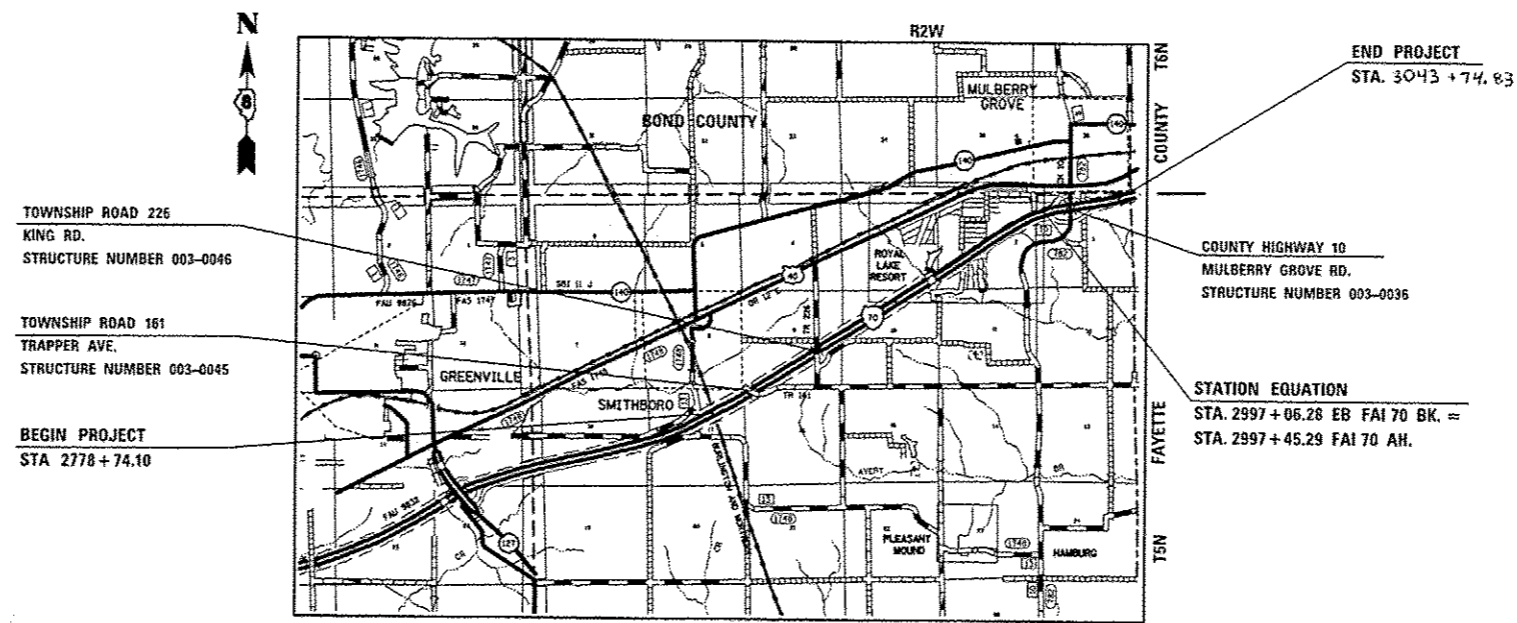
TR 226 (Over FAI 70)
KING RD.
SN 003-0046
2010 ADT= 125

FAS 782 & CH 10 (Over FAI 70)
MULBERRY GROVE RD.
SN 003-0036
2010 ADT= 2000

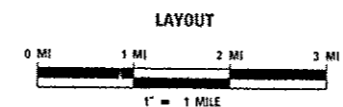


FULL SIZE PLANS HAVE BEEN PREPARED USING STANDARD ENGINEERING SCALES. REDUCED SIZED PLANS WILL NOT CONFORM TO STANDARD SCALES. IN MAKING MEASUREMENTS ON REDUCED PLANS, THE ABOVE SCALES MAY BE USED.

J.U.L.I.E.
JOINT UTILITY LOCATION INFORMATION FOR EXCAVATION
1-800-892-0123
OR 811



LOCATION MAP
PLEASANT MOUND TOWNSHIP



PROJECT GROSS LENGTH = 5.01 MILES (26,500.73 FT)
PROJECT NET LENGTH = 5.01 MILES (26,500.73 FT)

PROJECT ENGINEER MICHAEL PRITCHETT (618)346-3180
DESIGNER BO WEDMORE (618)346-3206
CONTRACT NO. 76D21

STATE OF ILLINOIS
DEPARTMENT OF TRANSPORTATION
DIVISION OF HIGHWAYS

SUBMITTED February 7, 2014
Deputy Director of Highways, Region Engineer
March 21, 2014
John D. Baranelli, P.E.
Engineer of Design and Environment
March 21, 2014
Emor Osman, P.E.
Director of Highways, Chief Engineer

PRINTED BY THE AUTHORITY
OF THE STATE OF ILLINOIS