

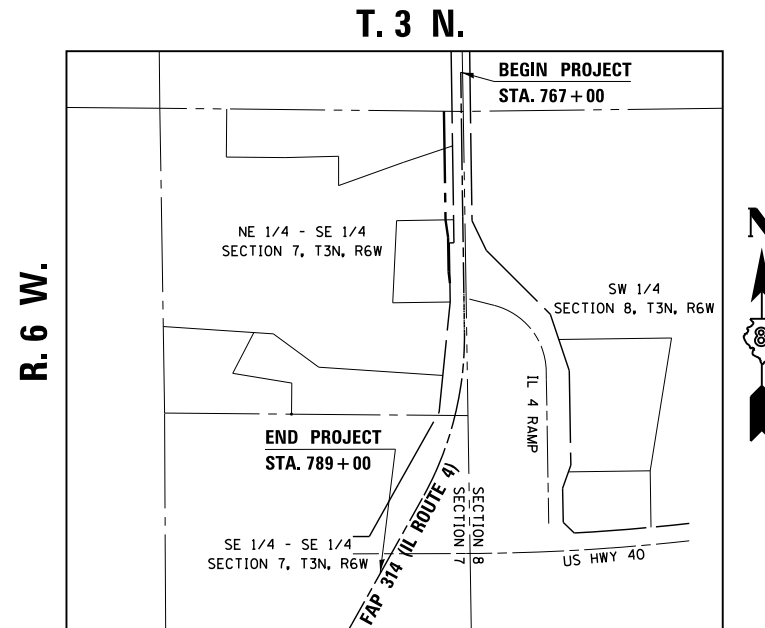
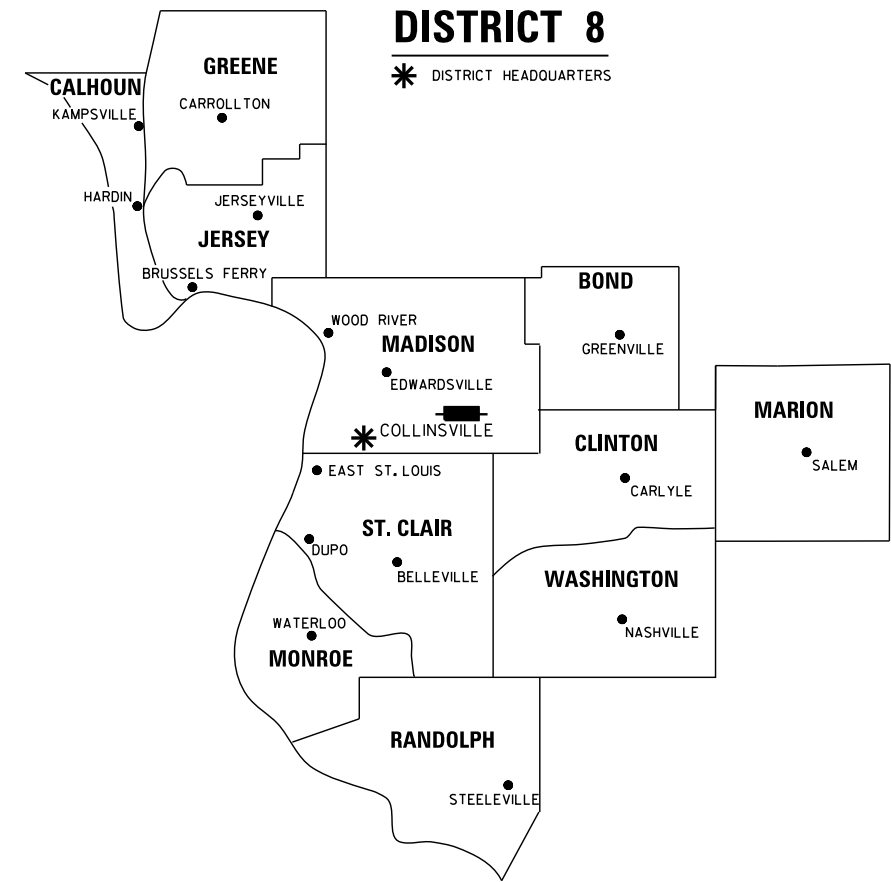
SHEET INDEX		
SHEET NO.	STATION TO STATION	DESCRIPTION
1		COVER SHEET
2		LEGEND/NOTE SHEET
3	769+00 TO 780+00	PAR. 8301021, 8301022 & 8301023
4		TOTAL HOLDING
5		CONTROL & CL TIES SECTION CORNER TIES

STATE OF ILLINOIS
DEPARTMENT OF TRANSPORTATION
DIVISION OF HIGHWAYS

PLAT OF HIGHWAYS

FAP ROUTE 314 (IL. ROUTE 4)
SECTION (110, 111)-I
MADISON COUNTY
JOB NO.
R-98-001-13

SPACE RESERVED FOR RECORDING OFFICER



PROJECT LENGTH = 2,200 LIN. FT. = 0.4167 MILES

LOCATION OF SECTION INDICATED THUS:

PREPARED BY:
API Survey LLC
17625 Mockingbird Road
P.O. Box 333
Nashville, Illinois 62263
Fax 618-478-9001
Ph. 618-478-9000
Email: gary@apisurvey.com
IDPR Design Firm License No. 184-006526



GARY S. MUELLER, IPLS # 3332
EXPIRATION DATE: 11-30-2014

SHEET 1 OF 5

ILLINOIS DEPARTMENT OF TRANSPORTATION DIVISION OF HIGHWAYS/REGION 5/DISTRICT 8 1102 EASTPORT PLAZA DRIVE COLLINSVILLE, ILLINOIS 62234-6198				
F.A.P. RTE.	SECTION	COUNTY	TOTAL SHEETS	SHEET NO.
314	(110, 111)-I	MADISON	34	16
CONTRACT NO. 76F76				
FED. ROAD DIST. NO. 8 [ILLINOIS] FED. AID PROJECT				