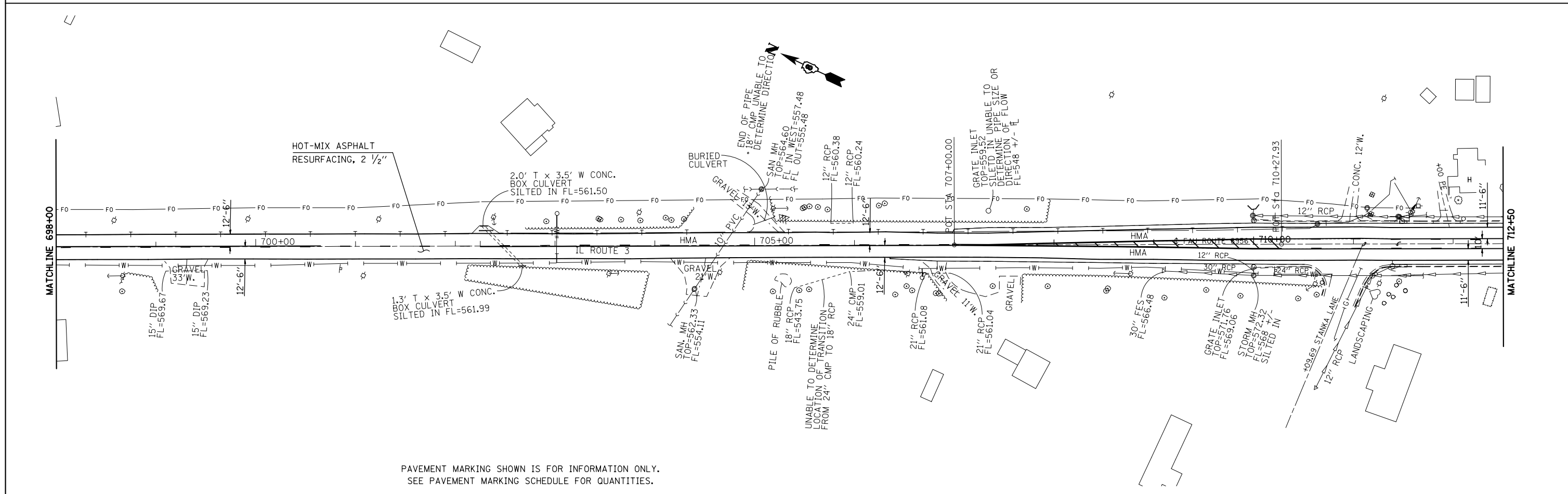
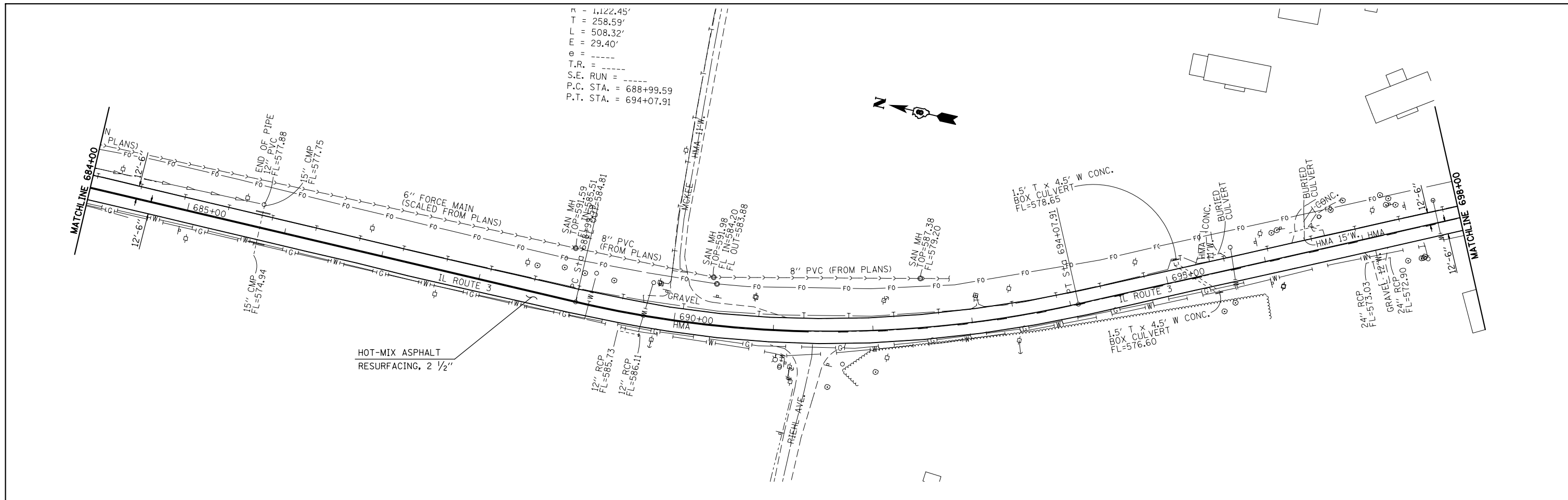


n = 1,122.45'
 T = 258.59'
 L = 508.32'
 E = 29.40'
 e = -----
 T.R. = -----
 S.E. RUN = -----
 P.C. STA. = 688+99.59
 P.T. STA. = 694+07.91



PAVEMENT MARKING SHOWN IS FOR INFORMATION ONLY.
 SEE PAVEMENT MARKING SCHEDULE FOR QUANTITIES.

FILE NAME =	USER NAME = harbaughrd	DESIGNED -	REVISED -
c:\pwwork\pwwork\harbaughrd\0349109\d076g60-sht-plan.dgn		DRAWN -	REVISED -
PLOT SCALE = 100.0000' / 1in.		CHECKED -	REVISED -
PLOT DATE = 1/31/2014		DATE -	REVISED -

STATE OF ILLINOIS
DEPARTMENT OF TRANSPORTATION

PLAN & PAVEMENT MARKING SHEETS
 SCALE: NA SHEET NO. 3 OF 9 SHEETS STA. 684+00 TO STA. 712+50

F.A.U. RTE.	SECTION	COUNTY	TOTAL SHEETS	SHEET NO.
8956	(59,60)RS-2	MADISON	27	18
CONTRACT NO. 76G60				
FED. ROAD DIST. NO. ILLINOIS FED. AID PROJECT				