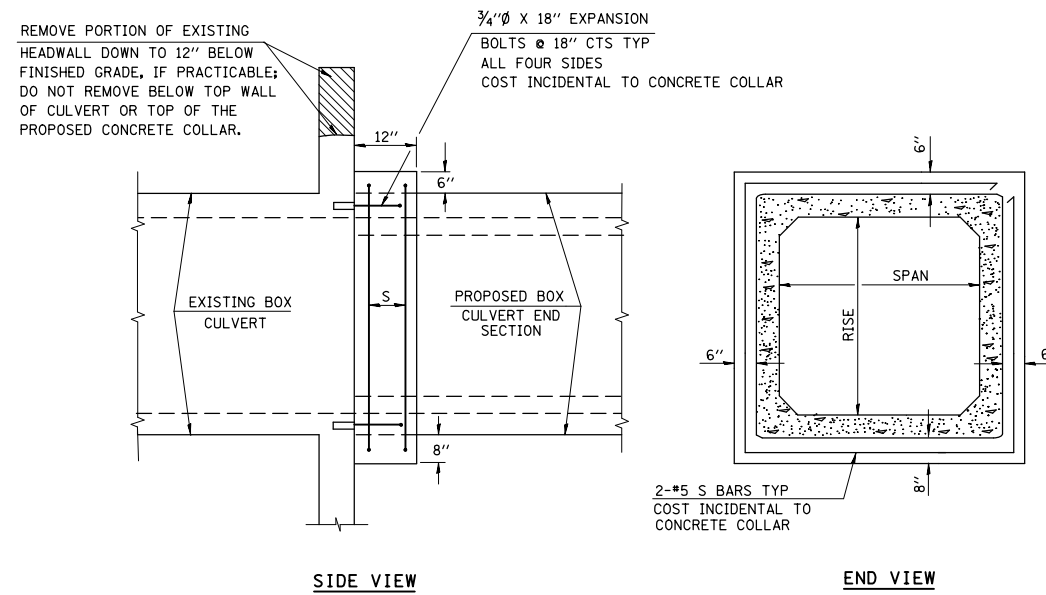


DETAILS OF CONCRETE COLLAR
FOR PRECAST BOX CULVERT END SECTION



| SPAN X RISE | CL SI CONCRETE | |
|-------------|----------------|--|
| | CU. YD. (EST) | |
| 10' X 2.5' | 0.67 | |
| 10' X 3' | 0.68 | |

CLASS SI CONCRETE SHALL BE USED THROUGHOUT.
CONCRETE COLLARS WILL BE PAID FOR AT THE CONTRACT UNIT PRICE PER CU. YD. AND SHALL INCLUDE ALL MATERIALS AND LABOR SPECIFIED TO COMPLETE THE WORK IN PLACE.

| | | | |
|---|-------------------------------|------------|-----------|
| FILE NAME = | USER NAME = milecmr | DESIGNED - | REVISED - |
| et:\pw\work\p\dot\m\l\cmr\d0345201\d876 | 61-sht-pln.dgn | DRAWN - | REVISED - |
| | PLOT SCALE = 100.0000' / 1in. | CHECKED - | REVISED - |
| | PLOT DATE = 2/6/2014 | DATE - | REVISED - |

STATE OF ILLINOIS
DEPARTMENT OF TRANSPORTATION

CONCRETE COLLAR FOR PRECAST BOX CULVERT END SECTION

SCALE: SHEET NO. OF SHEETS STA. TO STA.

| | | | | |
|---------------------|-------------------------|---------------------------|-----------------|--------------|
| F.A.* RTE. | SECTION | COUNTY | TOTAL SHEETS | SHEET NO. |
| • | (109,110)RS-1, 31-2RS | WASHINGTON | 40 | 37 |
| • | FAP 690/FAS 819/FAP 322 | CONTRACT NO. 76G61 | | |
| FED. ROAD DIST. NO. | | ILLINOIS FED. AID PROJECT | | |