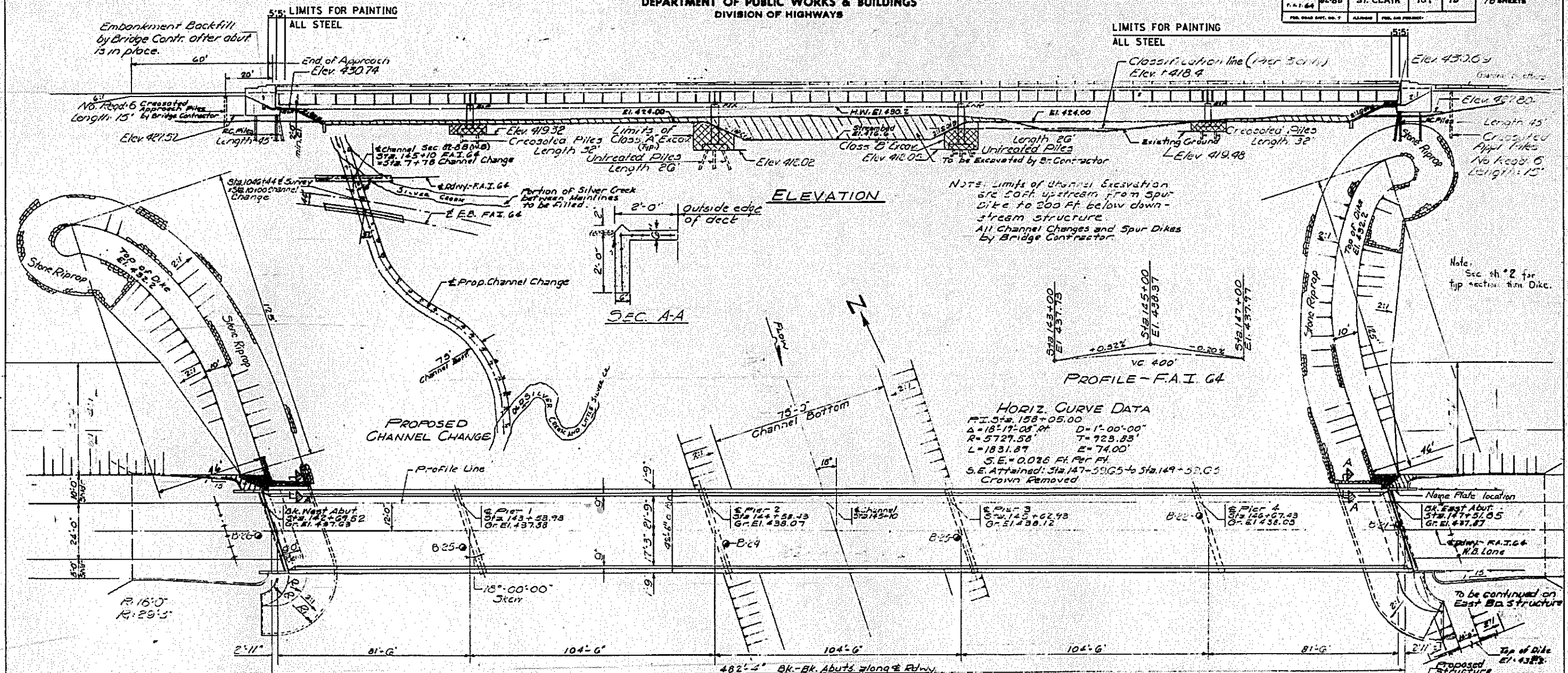


B.M. No. F Railroad spike in willow tree
140' Rt. of F. 1034+50 El. 423.58

STATE OF ILLINOIS
DEPARTMENT OF PUBLIC WORKS & BUILDINGS
DIVISION OF HIGHWAYS

ROUTE NO.	SECTION	COUNTY	TOTAL SHEETS	SHEET NO.
82-88	ST. CLAIR	10T	15	16



FOR INFORMATION ONLY

Sta. 145+10
BUILT 197 BY
STATE OF ILLINOIS
F.A.I. RT. 64 SEC. 82-88
F.A.I. RT. 64 (164-1150)
LOADING H20-S16-44

NAME PLATE
(Sec. Std. E115-1)

DESIGNED	RAC G.K.
CHECKED	I. Kaper
DRAWN	JACOBS
CHECKED	I.K.

EXAMINED	March 19 1968
PASSED	W.E. Blumhagen
APPROVED	J.E. Staff

Rev. 7/16/70 Rao G.K.

12-11-63 H.V.B. 11-30-67

FILE NAME	USER NAME	DESIGNED	REVISED	EXISTING STRUCTURE DETAILS	F.A.I. RTE.	SECTION	COUNTY	TOTAL SHEETS	SHEET NO.
#FILE#	#USER#	DRAWN	REVISED	STRUCTURE NO. 082-0186	64	82-88-P	ST. CLAIR	29	9
		CHECKED	REVISED	SCALE: N/A	SHEET NO. OF SHEETS		TO STA.	FED. ROAD DIST. NO., ILLINOIS FED. AID PROJECT	
		DATE	REVISED		STA. TO STA.			CONTRACT NO. 76663	

STATE OF ILLINOIS
DEPARTMENT OF TRANSPORTATION

EXISTING STRUCTURE DETAILS
STRUCTURE NO. 082-0186

F.A.I. RTE.	SECTION	COUNTY	TOTAL SHEETS	SHEET NO.
64	82-88-P	ST. CLAIR	29	9
CONTRACT NO. 76663				