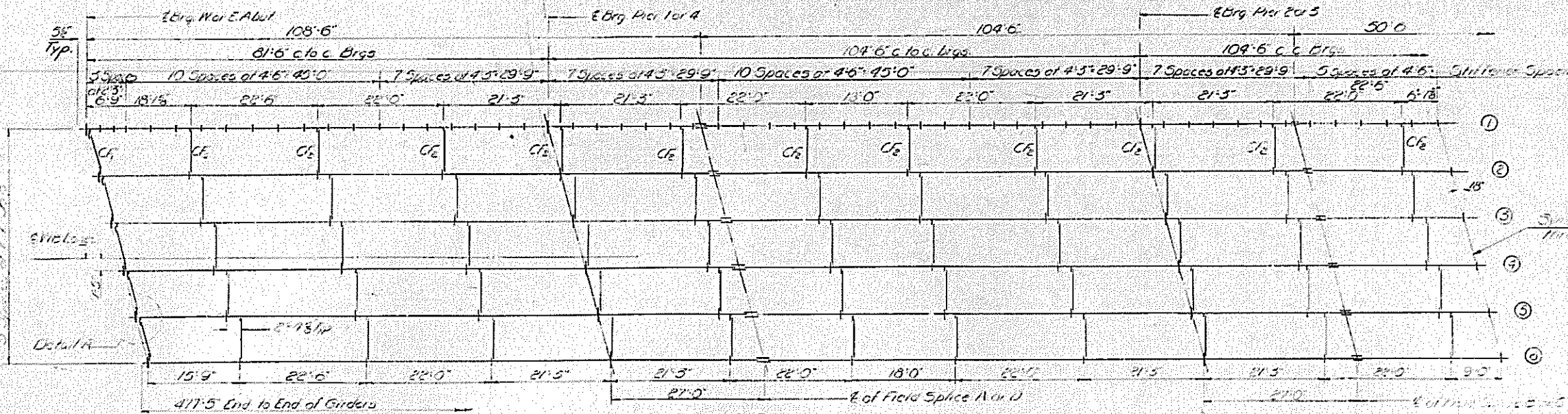
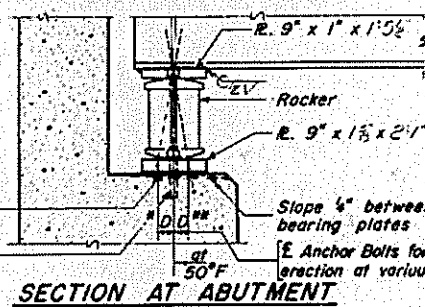


STATE OF ILLINOIS  
DEPARTMENT OF PUBLIC WORKS & BUILDINGS  
DIVISION OF HIGHWAYS

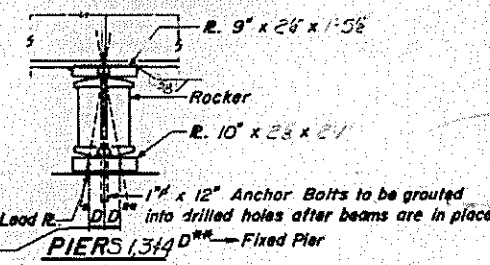
DATE A.S.I. P.A.A. 64	DISTRICT 82-88	COUNTY ST. CLAIR	SECTION 107	SHEET NO. 20	SHEET NO. 5 16 SHEETS
-----------------------------	-------------------	---------------------	----------------	-----------------	--------------------------



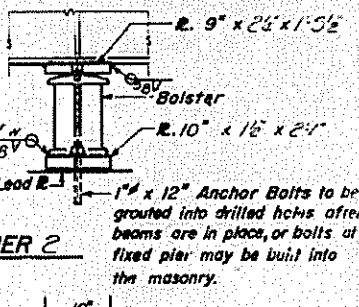
HALF FRAMING PLAN



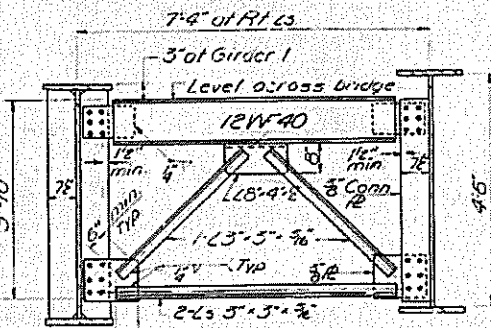
SECTION AT ABUTMENT



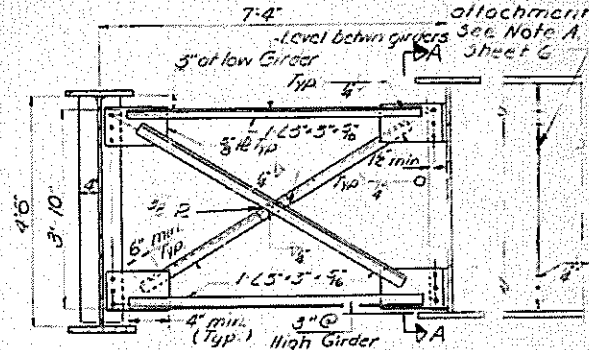
PIER 2



PIER 2

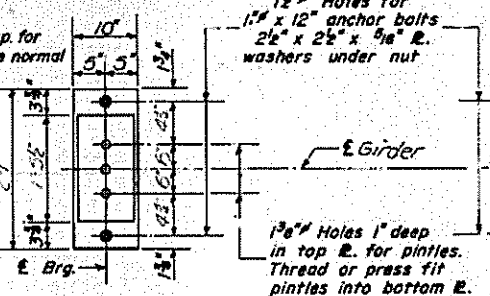


TYPICAL CROSS FRAME - CF1

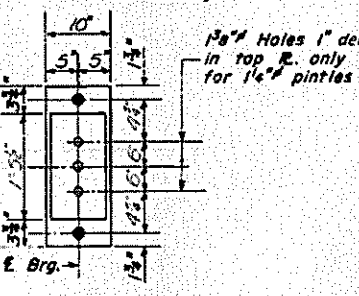


TYPICAL CROSS FRAME - CF2

1/2" x 12" Anchor Bolts to be grouted into drilled holes after beams are in place.  
1/2" Holes 1" deep in Top R. for pintles. Thread or press fit pintles into bottom R.  
1/2" Holes for 1" x 12" anchor bolts. 2 1/2" x 2 1/2" x 3/8" E. washers under nut.  
D = 1/100 ft. of exp. for every 15° below the normal temp. of 50°F.  
D = 1/100 ft. of exp. for every 15° above the normal temp. of 50°F.



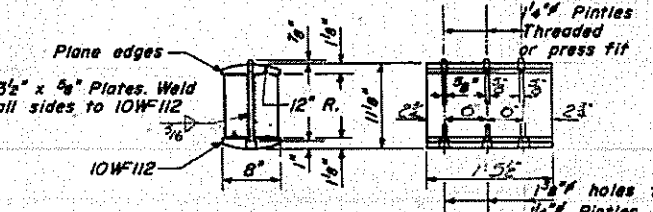
PLAN



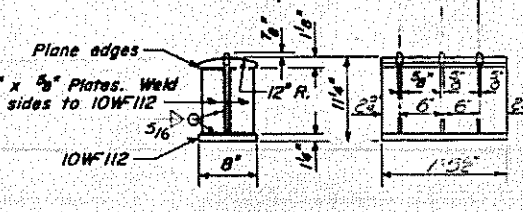
PLAN



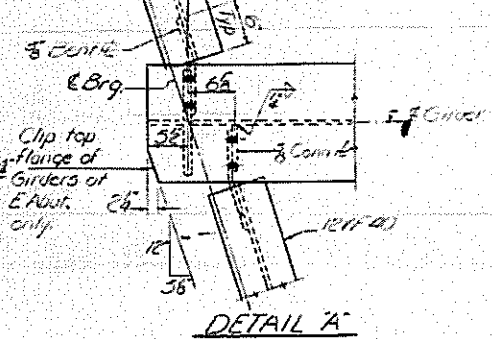
DETAIL OF PINTLE



DETAIL OF ROCKER AT PIER 5, 3, 4 & ABUTS



DETAIL OF BOLSTER AT PIER 2



DETAIL A

Note: Use 5/8" HS Bolts in 1/2" plates in Cross frame field connections.

ELEVATIONS TOP OF WEB (For Fabrication only)

Span	E Brg. Without Pier 1	E Brg. Pier 1	E Splice A	E Brg. Pier 2	E Splice B	E Splice C	E Brg. Pier 3	E Splice D	E Brg. Pier 4	E Brg. Abut
1	436.77	436.98	437.03	437.13	437.19	437.24	437.28	437.33	437.34	437.37
2	436.93	437.14	437.21	437.31	437.35	437.39	437.37	437.35	437.29	437.13
3	437.08	437.27	437.34	437.44	437.45	437.51	437.49	437.45	437.41	437.27
4	437.14	437.33	437.42	437.52	437.53	437.58	437.56	437.52	437.48	437.34
5	437.03	437.24	437.31	437.41	437.45	437.46	437.41	437.40	437.35	437.28
6	436.90	437.11	437.18	437.28	437.32	437.32	437.30	437.26	437.22	437.05

DESIGNED R.A.C. G.K.  
CHECKED I. Karper  
P.G. Barnett  
DRAWN W.A. Sausman Jr.  
CHECKED I.K.  
MARCH 15 1963  
APPROVED J.C. Hoff

I-2 7-2-62 Rev. 11-9-62 Rev. 8-16-63 Rev. 12-10-63

STRUCTURAL STEEL  
FAL RTE 64 SEC 82-88 (WB)  
ST. CLAIR COUNTY  
STA. 145+10

FOR INFORMATION ONLY