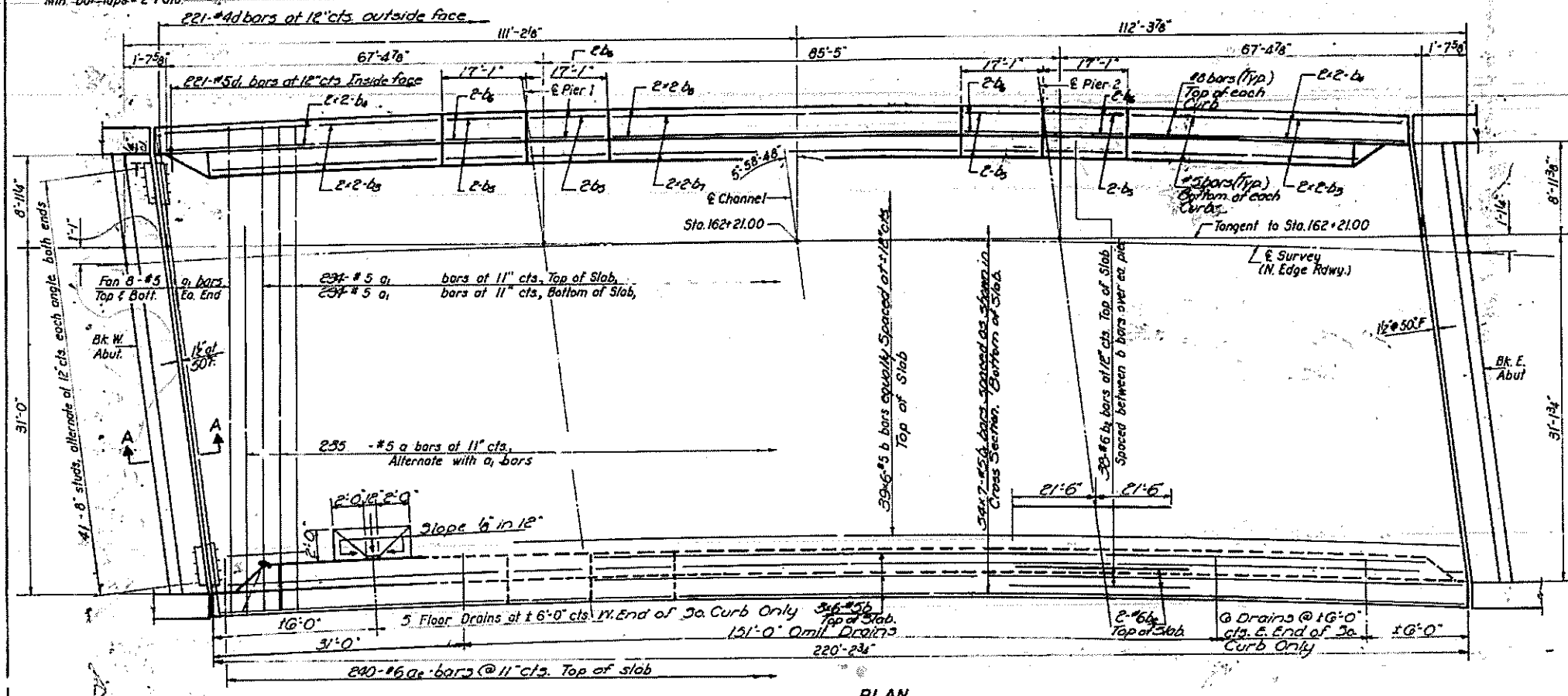


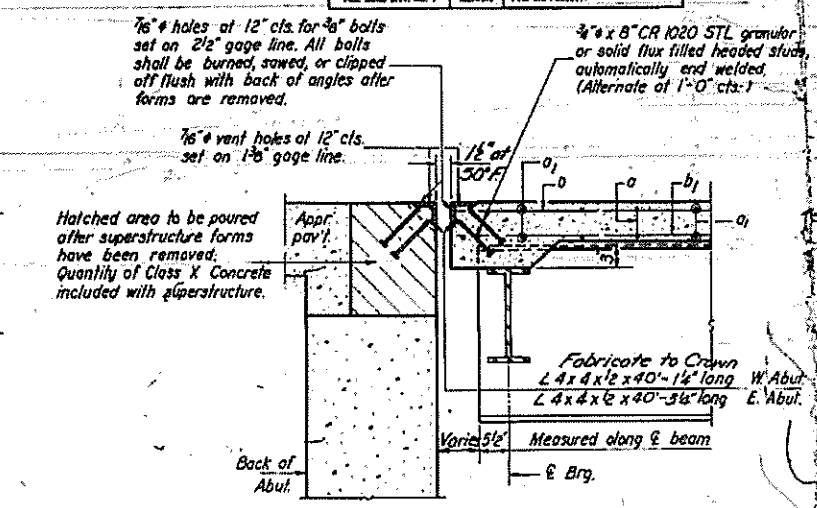
STATE OF ILLINOIS
DEPARTMENT OF PUBLIC WORKS & BUILDINGS
DIVISION OF HIGHWAYS

PROJECT NO.	SECTION	COUNTY	TOTAL SHEETS	SHEET NO.
64-828B	ST. CLAIR	107	51	11

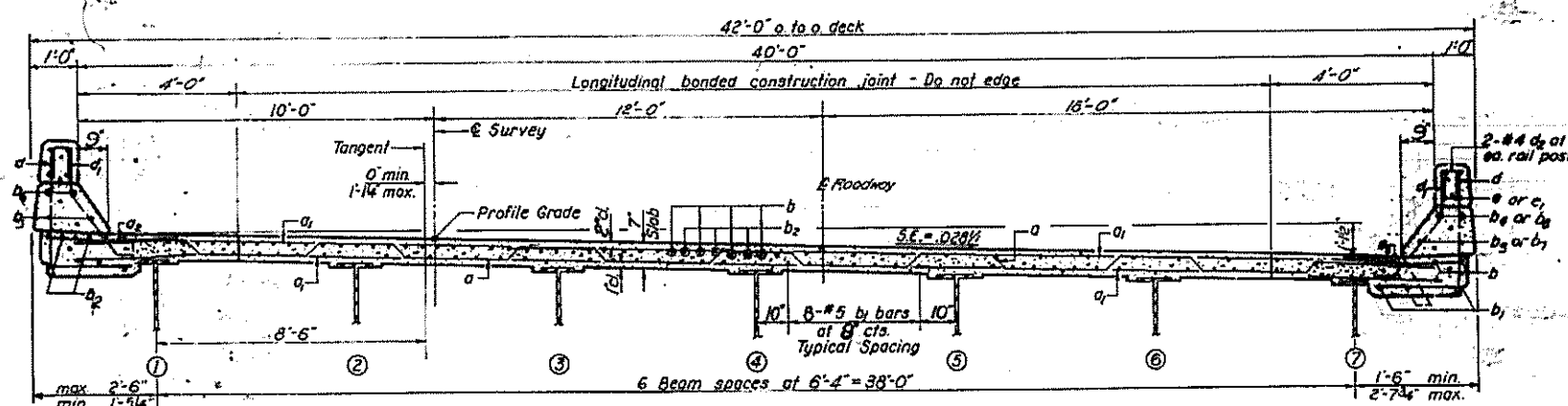
Note:
Bars indicated thus 20x3-#5 etc. indicates
20 lines of bars with 3 lengths per line.
Min. bar-laps = 2' dia.



PLAN

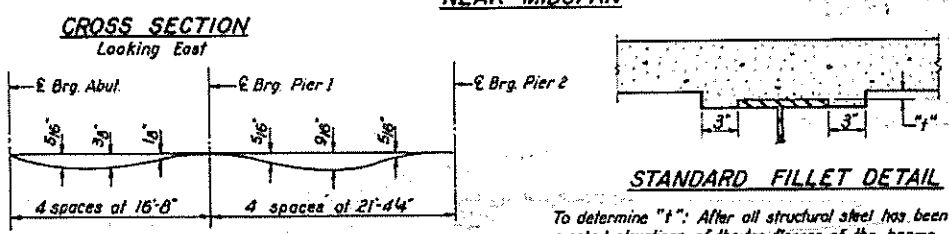


SECTION A-A



NEAR PIERS

NEAR MIDSPAN

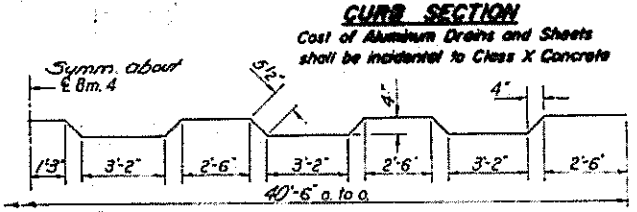


CROSS SECTION
Looking East

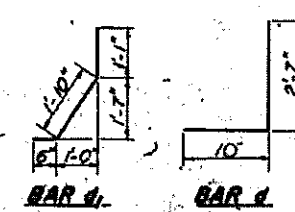
DEAD LOAD DEFLECTION DIAGRAM

(Includes weight of concrete only)
Note: The above deflections are not to be used in the field if the engineer is working from the grade elevations adjusted for dead load deflections as shown on sheet #3.

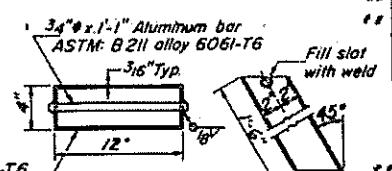
STANDARD FILLET DETAIL
To determine "f": After all structural steel has been erected, elevations of the top flanges of the beams shall be taken at intervals shown on sheet #3. These elevations subtracted from the "Grade Elevations Adjusted for Dead Load Deflections" shown on sheet #3, minus slab thickness, equals the fillet height "f" above top of beams.



CURB SECTION



TYP DETAIL AT DRAIN



FLOOR DRAIN

BILL OF MATERIAL

Bar	No.	Size	Length	Shape	
a	235	#5	42'-0"		
a1	500	#5	41'-2"		
a2	480	#6	4'-0"		
b	270	#5	37'-9"		
b1	378	#5	38'-0"		
b2	84	#6	43'-0"		
b3	16	#5	25'-9"		
b4	16	#8	26'-3"		
b5	16	#5	16'-10"		
b6	16	#8	16'-10"		
b7	8	#5	26'-3"		
b8	8	#8	26'-9"		
d	442	#4	3'-2"		
d1	442	#5	3'-5"		
				Class X Concrete	Cu Yds 252.0
				Reinforcement Bars	Lbs. 71000
				Structural Steel	L.S. L.S.

** Includes Paper Quantities - see Sheet #4

SUPERSTRUCTURE
F.A.I. RT. 64 - SEC. 82-8B
ST. CLAIR COUNTY
STA. 162+21

DESIGNED R. Bradford Jr.
CHECKED R. Bradford Jr.
DRAWN J.L. Armstrong
CHECKED R.K.
EXAMINED M.B. Bradford
PASSED M.B. Bradford
APPROVED U.E. Bradford
Dec. 4 1961

Rev 11/4/66 RB Jr. Top reinforcement change revised to E, additional bars added. Rev Reinf. Bar. total 253,000 to 68,110 Lbs.

Revised: 8/10/67 - Changed Curb Sec. to new configuration; Changed Cl. X Conc. Cu. Yds. from 244.3 to 253.3 Reinf. Bar. Lbs. from 64,110 to 68,460. S.D.

Rev: 9-4-68 Rao. G.K.

FILE NAME	USER NAME	DESIGNED	REVISED	EXISTING STRUCTURE DETAILS	F.A. RTE.	SECTION	COUNTY	TOTAL SHEETS	SHEET NO.
#FILE#	#USER#	DRAWN	REVISED	STRUCTURE NO. 082-0188	64	82-8B-P	ST. CLAIR	29	22
PLDT SCALE	#SCALE#	CHECKED	REVISED	SCALE: 1/4"	CONTRACT NO. 76663				
PLDT DATE	#DATE#	DATE	REVISED	SHEET NO. OF SHEETS	FED. ROAD DIST. NO. [ILLINOIS] FED. AID PROJECT				

FOR INFORMATION ONLY