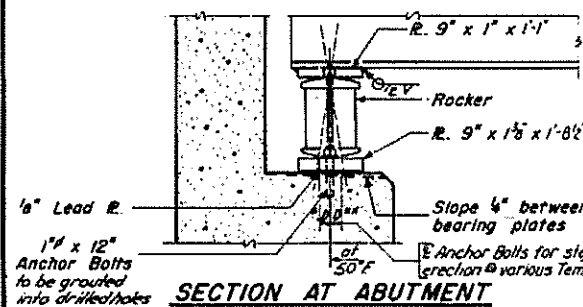
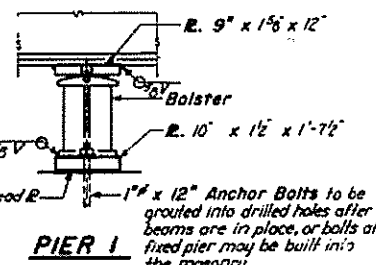
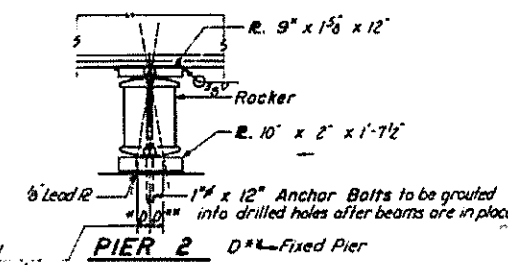


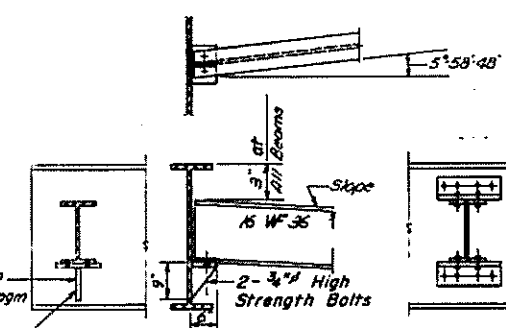
FRAMING PLAN
All Beams 36 W 150



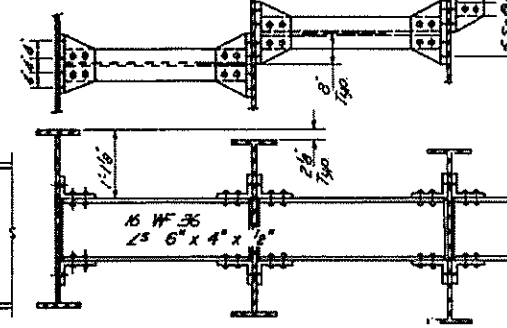
SECTION AT ABUTMENT



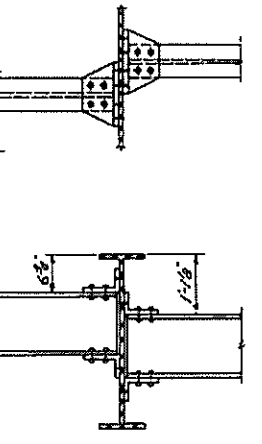
PIER 1



DIAPHRAGM D
12 Required

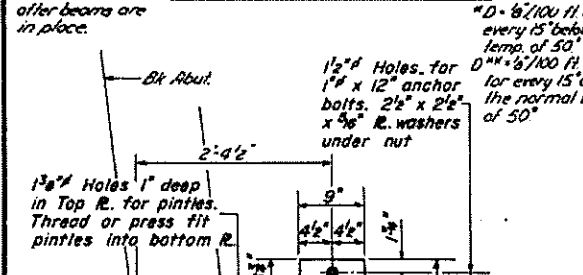


DIAPHRAGM D1
54 Required

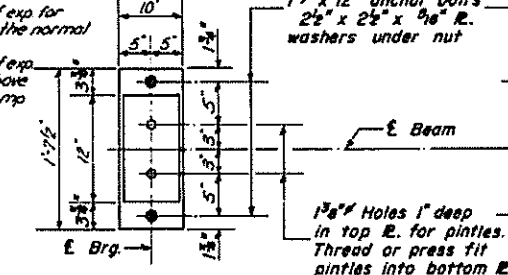


SEC. A-A TYP.
ELEVATION TOP OF WF

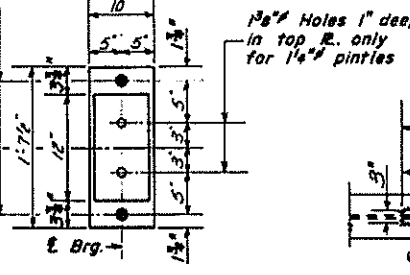
Loc.	Beam	1	2	3	4	5	6	7
E. Brq. W. Abut		437.77	437.59	437.42	437.24	437.06	436.89	436.71
E. Pier 1		437.90	437.72	437.55	437.37	437.19	437.02	436.84
E. Splice A		437.93	437.75	437.58	437.40	437.22	437.05	436.87
E. Splice B		438.07	437.89	437.72	437.54	437.36	437.19	437.01
E. Pier 2		438.14	437.96	437.79	437.61	437.43	437.26	437.08
E. Brq. E. Abut		438.38	438.20	438.03	437.85	437.67	437.50	437.32



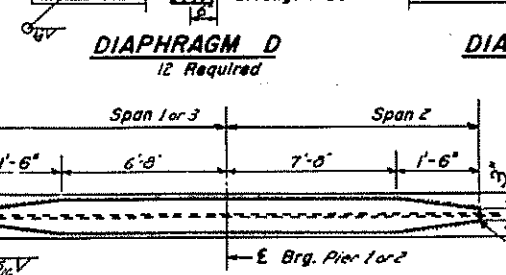
PLAN



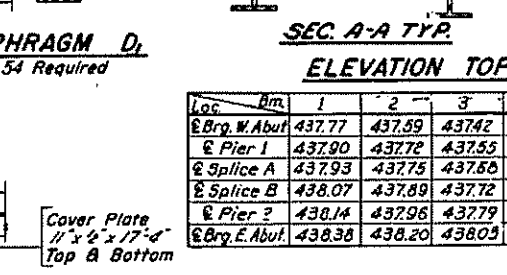
PLAN



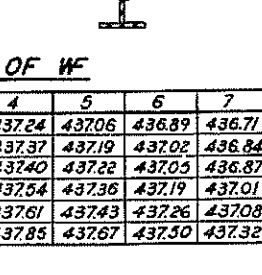
PLAN



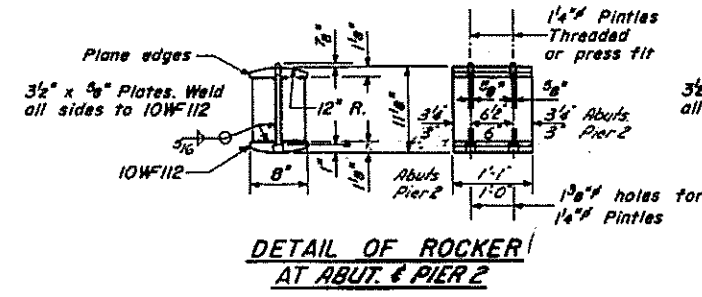
DETAIL OF COVER PLATE



DETAIL OF BOLSTER AT PIER 1



DETAIL OF SPlice



DETAIL OF ROCKER AT ABUT. & PIER 2

Note: - Diaphragm connectors may be adapted to shop welding subject to approval by the Engineer.

STRUCTURAL STEEL
F.A.L. RT. 64 - SEC. 82-8B
ST. CLAIR COUNTY
STA. 162+21

DESIGNED *R. Bradford Jr.*
CHECKED *R. Kowert*
DRAWN *W.A. Seussman Jr.*
EXAMINED *W.B. ...*
APPROVED *U.E. ...*

I-2-C 7-2-62 Rev. 11-9-62 Rev. 8-16-63

FOR INFORMATION ONLY