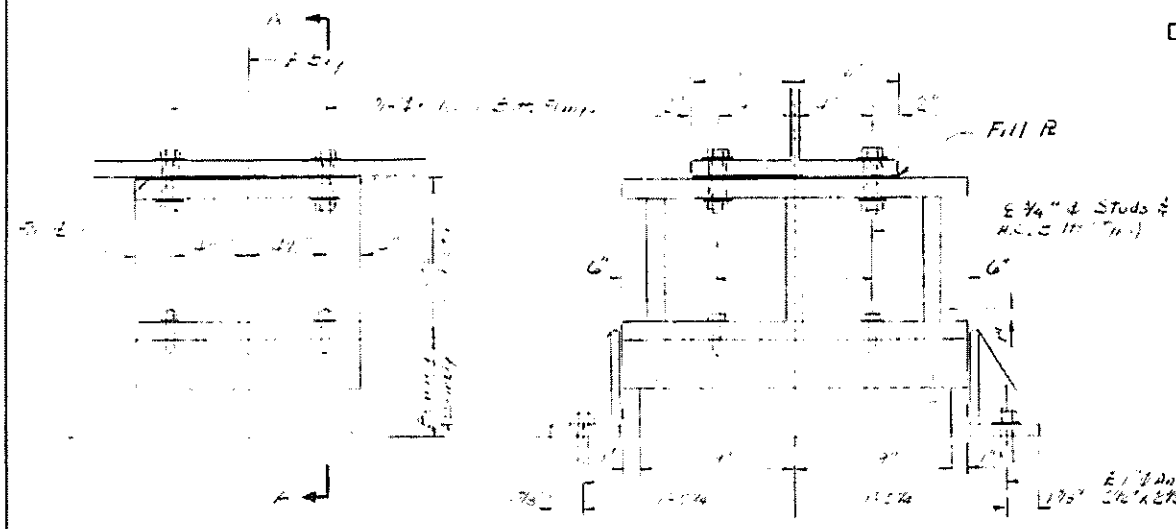


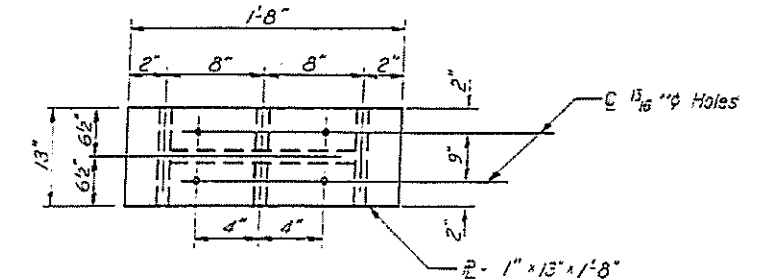
STATE OF ILLINOIS  
DEPARTMENT OF TRANSPORTATION

ROUTE NO.	SECTION	COUNTY	TOTAL SHEETS	SHEET NO.
64	82-BB-P	ST. CLAIR	29	27

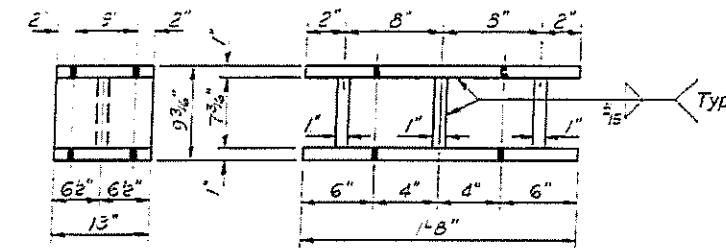
\* 82-8BI-(1,2)



Note: Burn off existing anchor bolts flush with existing concrete surface. Grind smooth and seal with epoxy.



PLAN - TOP & BOTTOM R



END VIEW

ELEVATION

No. Req'd : 14

TYPE I ELASTOMERIC EXP. BRG.

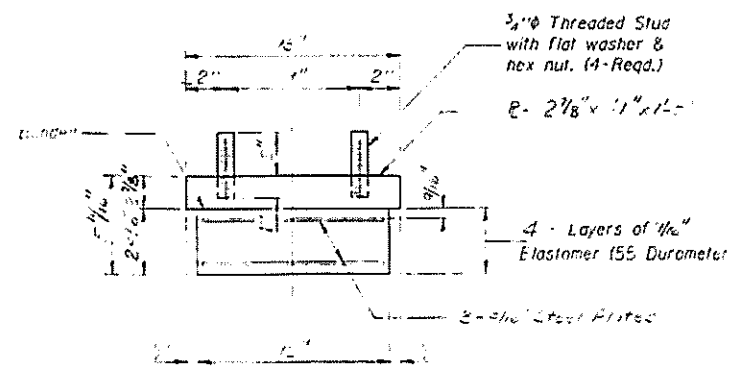
Note: Before installing the new bearings, remove the top R of the existing bearing assembly from the bottom flange of the girders and grind smooth all weld material remaining on the bottom flange. Cost is incidental to F.B.E. Structural Steel.

Note: Fill plates are used in section B-B. It is same as no. 2, 3, 4. Thickness of fill plates are 1/4\"/>

Note: New steel plates, 2\"/>

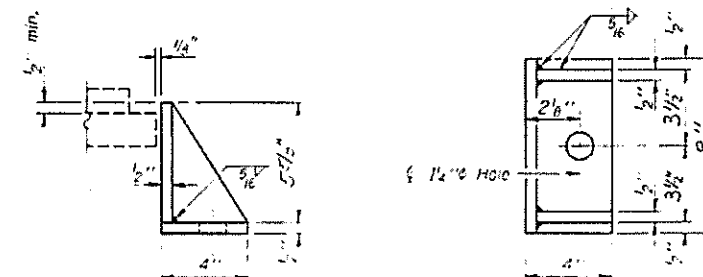
BEAM REACTIONS

Live Load	48.5K
Dead Load	89.6K
Impact	12.6K



BEARING ASSEMBLY

Note: Shim plates shall not be placed under Bearing Assembly.



SIDE RETAINER

Equivalent rolled angle with stiffener will be allowed in use of welded plate.

Note: New side retainers and anchor bolts are included in furn. and Erect. Structural Steel.

Note: Diaphragm removal and replacement may be required to facilitate drilling holes in bottom flange for bearing attachment. Cost is incidental to F.B.E. Struct. Steel.

BILL OF MATERIAL

Item	Unit	Total
Elastomeric Bearing Assembly Type 1	Eac	14
Furnishing and Erecting Structural Steel	Lbs.	4140

PIER No. 2  
S.N. 082-0188 & 082-0189  
ELASTOMERIC BEARINGS

FAI Route 64  
Sec. 82-8BI-(1,2)  
ST. CLAIR COUNTY

FOR INFORMATION ONLY

DESIGNED	EXAMINED
CHECKED	PASSED
DRAWN	APPROVED
CHECKED	

FILE NAME *	USER NAME = #USER#	DESIGNED -	REVISED -	STATE OF ILLINOIS DEPARTMENT OF TRANSPORTATION	EXISTING BEARING DETAILS (SN-082-0188, 0189)	F.A. RTE. 64	SECTION 82-BB-P	COUNTY ST CLAIR	TOTAL SHEETS 29	SHEET NO. 27
*FILE#	PLOT SCALE = #SCALE#	DRAWN -	REVISED -	SCALE: N/A	SHEET NO. OF SHEETS	ST. CLAIR	82-BB-P	ST. CLAIR	29	27
	PLOT DATE = #DATE#	CHECKED -	REVISED -		STA. TO STA.					