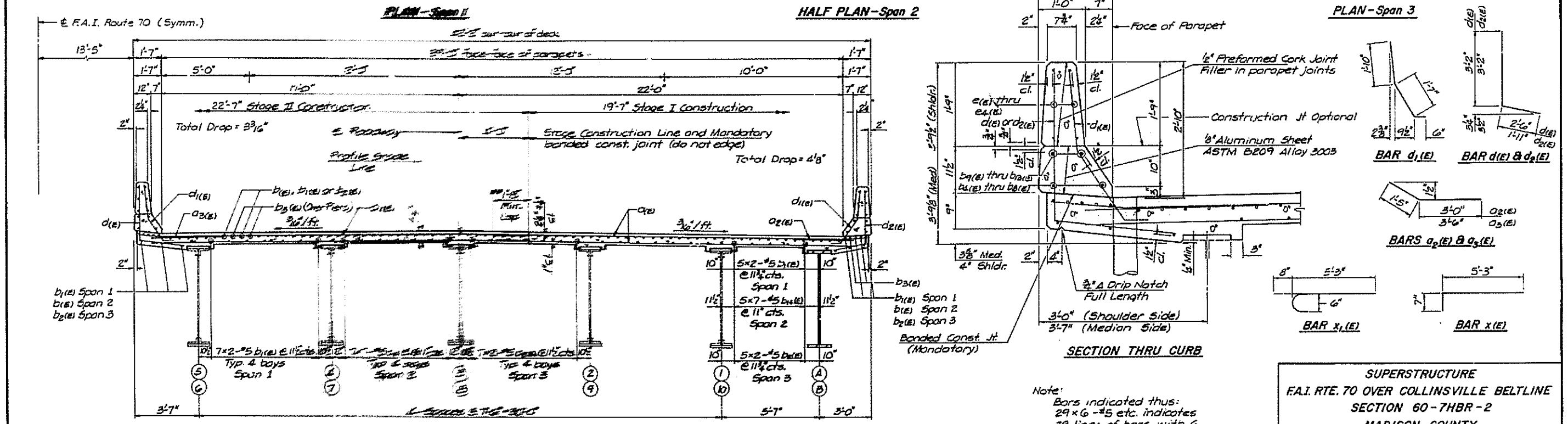
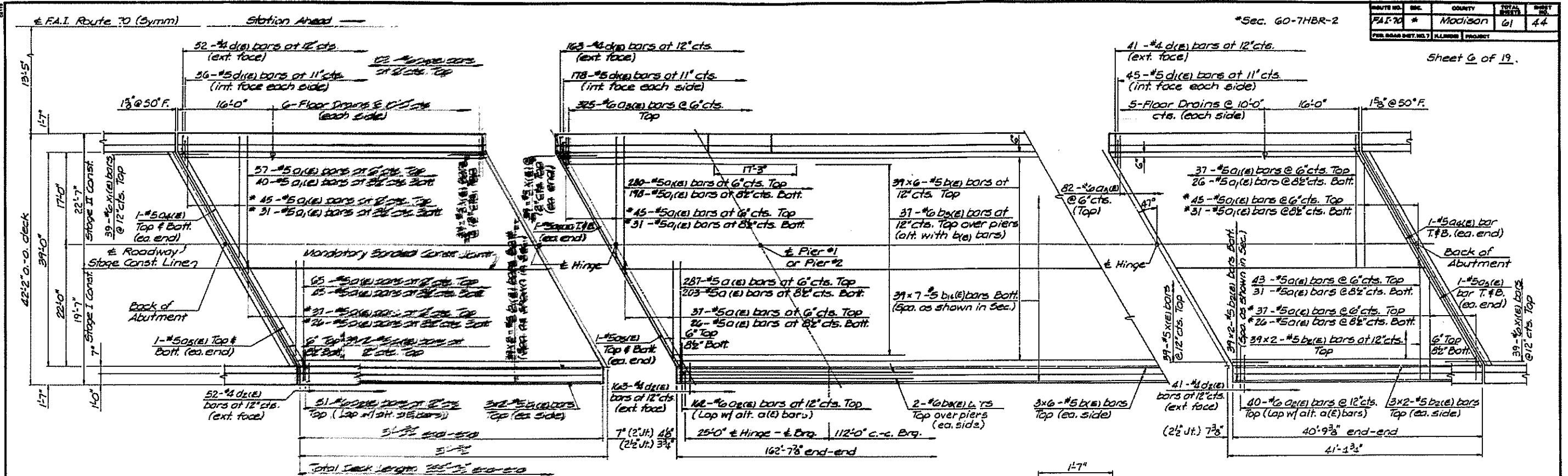


FOR INFORMATION ONLY

ROUTE NO.	SEC.	COUNTY	TOTAL SHEETS	SHEET NO.
FAI-70	*	Madison	61	44
FED. ROAD DIST. NO. 7	ILLINOIS	PROJECT		

Sheet 6 of 19.



Note:
 Bars indicated thus:
 29 x 6 - #5 etc. indicates
 29 lines of bars with 6
 lengths per line
 Reinf. Lap Lengths
 #5 - 1'-8"
 #8 - 3'-8"

SUPERSTRUCTURE
 FAI. RTE. 70 OVER COLLINSVILLE BELTLINE
 SECTION 60-7HBR-2
 MADISON COUNTY
 STA. 544 + 31.73

T.E.B.	 HANSON ENGINEERS INCORPORATED SPRINGFIELD, PEORIA & ROCKFORD, ILLINOIS	FILE NO.
T.E.H.		BAS1062
R.A.H.		DATE
T.E.H.		5/5/86

FILE NAME	USER NAME	DESIGNED	REVISED	STATE OF ILLINOIS DEPARTMENT OF TRANSPORTATION	EXISTING STRUCTURE DETAILS (SN 060-0014 & 0015)	F.A.I. RTE.	SECTION	COUNTY	TOTAL SHEETS	SHEET NO.	
*FILE#	#USER#	DRAWN	REVISED			55/70	60-7HBR-P	MADISON	25	11	
PLOT SCALE	#SCALE#	CHECKED	REVISED			SCALE: N/A	SHEET NO. OF SHEETS	STA. TO STA.	CONTRACT NO. 76G64		
PLOT DATE	#DATE#	DATE	REVISED			FED. ROAD DIST. NO., ILLINOIS FED. AID PROJECT					