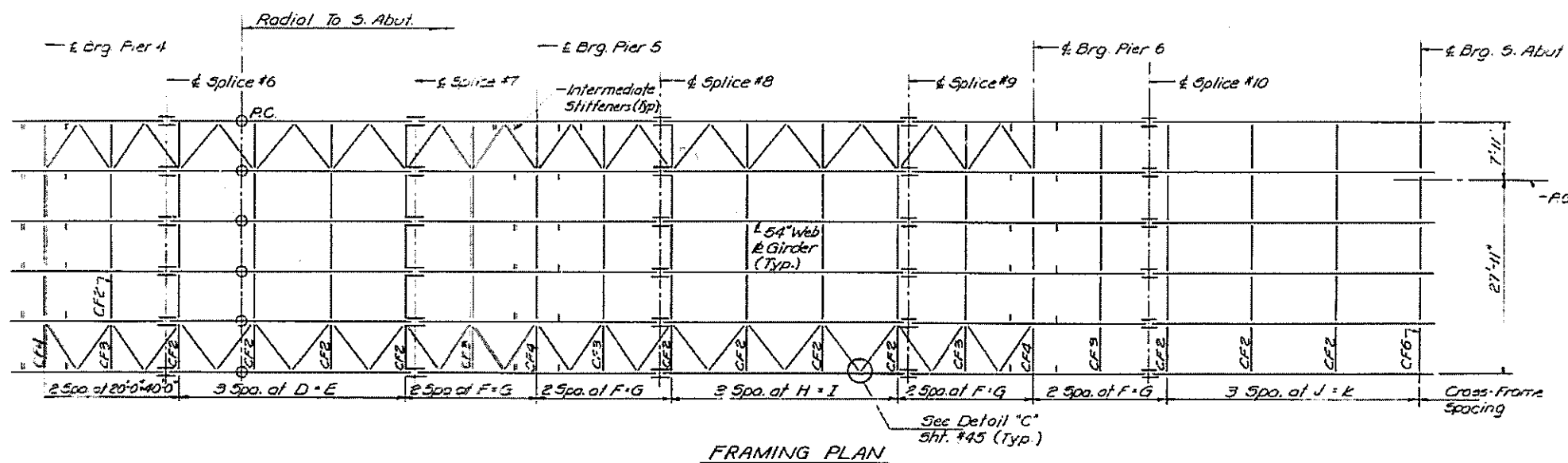
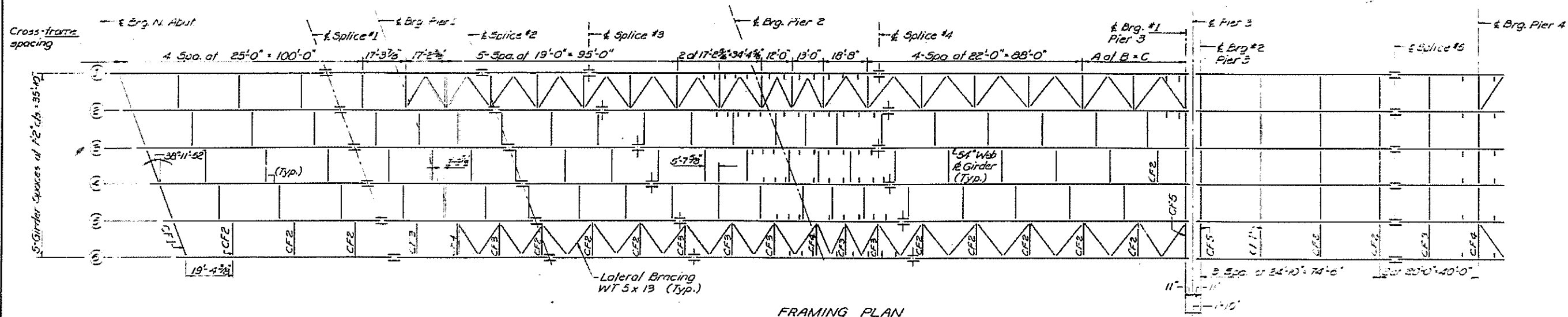


FOR INFORMATION ONLY

STATE OF ILLINOIS
DEPARTMENT OF TRANSPORTATION

DATE	BY	CHKD	TOTAL SHEETS	SHEET NO.
11-25	11-28	J. C. ...	83	50

SHEET NO. 35
69 SHEETS



* TOP OF WEB ELEVATIONS

Beam No.	1	2	3	4	5	6
Brig. N. Abut.	433.200	433.200	433.901	434.026	434.221	434.212
Splice #1	433.201	434.200	434.065	434.271	434.367	434.352
Brig. Pier 1	433.175	433.225	434.041	434.150	434.260	434.224
Splice #2	433.150	433.212	434.026	434.132	434.267	434.227
Splice #3	433.072	433.223	433.922	434.042	434.107	434.077
Brig. Pier 2	433.202	433.424	433.602	433.681	433.751	433.694
Splice #4	433.612	433.674	433.744	433.765	433.803	433.685
Brig. Pier 3 (Span 3)	433.350	433.119	432.193	432.306	432.413	432.387
Brig. Pier 3 (Span 4)	431.907	431.226	432.171	432.283	432.395	432.364
Splice #5	432.559	432.941	433.013	433.021	433.149	433.088
Brig. Pier 4	433.077	433.128	433.236	433.201	433.163	433.092
Splice #6	433.387	433.701	433.619	433.476	433.332	433.121
Splice #7	433.623	433.286	427.933	427.563	427.109	426.940
Brig. Pier 5	427.106	427.338	426.970	426.599	426.226	425.629
Splice #8	426.972	426.599	426.226	425.854	425.481	425.096
Splice #9	426.265	426.126	424.319	423.947	423.574	423.201
Brig. Pier 6	423.530	423.517	423.144	422.772	422.399	422.026
Splice #10	422.565	422.612	422.239	421.867	421.494	421.121
Brig. S. Abut.	422.554	422.182	419.209	419.436	419.064	418.691

* For fabrication only. Before any deflections.

See Sheet #37, #38 & #39 for Span lengths, Segment lengths and G. Girder details

Beam	A	B	C	D	E	F	G	H	I	J	K	Radius
1	2	20'-7 3/8"	41'-9 3/8"	122'-9 3/8"	66'-11 3/8"	20'-0"	40'-0"	22'-4 1/2"	67'-2 1/2"	124'-11 1/2"	74'-11 1/2"	1917.776'
2	2	17'-10 1/2"	35'-8 1/4"	122'-3 1/2"	66'-9 1/2"	19'-11 1/2"	39'-10 1/2"	22'-5 1/2"	66'-11 1/2"	24'-10 1/2"	74'-8 3/4"	1910.609'
3	2	15'-0 1/2"	30'-0 1/2"	22'-2 1/2"	66'-7 1/2"	19'-10 1/2"	39'-8 1/2"	22'-2 1/2"	66'-8 1/2"	24'-9 1/2"	74'-5"	1903.442'
4	1	24'-4 1/2"	24'-4 1/2"	22'-1 1/2"	66'-4 1/2"	19'-9 1/2"	39'-6 1/2"	22'-1 1/2"	66'-5 1/2"	24'-3 1/2"	74'-1 1/2"	1896.275'
5	1	18'-9 1/4"	18'-9 1/4"	122'-0 1/2"	66'-2 1/2"	19'-8 1/2"	39'-4 1/2"	22'-0 1/2"	66'-2 1/2"	24'-7 1/2"	73'-10 1/4"	1889.108'
6	—	—	—	122'-0 1/2"	66'-0 1/2"	19'-7 1/2"	39'-3"	21'-1 1/2"	65'-11 1/2"	24'-6 1/2"	73'-3 1/2"	1881.941'

LENGTHS ALONG # OF BEAMS

DESIGNED: P. S. Br. ...	EXAMINED: [Signature]
CHECKED: D. J. Kroll	PASSED: [Signature]
DRAWN: G. G. FERCHON	APPROVED: [Signature]
CHECKED: [Signature]	

RAMP-E
STRUCTURAL STEEL
F.A.I. RT. 270 SEC. 82-7HB
ST. CLAIR COUNTY
STATION 343+61.11