

STATE OF ILLINOIS
DEPARTMENT OF TRANSPORTATION
DIVISION OF HIGHWAYS

**PROPOSED
HIGHWAY PLANS**

FAI ROUTE 70 (I-70)
SECTION 60-13-RA-L

SILVER LAKE REST AREA
RAMP LIGHTING REPLACEMENT
MADISON COUNTY

C-98-002-14

| F.A.I. RTE. | SECTION | COUNTY | TOTAL SHEETS | SHEET NO. |
|-------------|------------|----------|--------------------|-----------|
| 70 | 60-13-RA-L | MADISON | 6 | 1 |
| | | ILLINOIS | CONTRACT NO. 76G77 | |

D-98-004-14

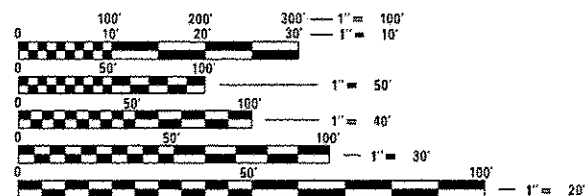


INDEX OF SHEETS

1. COVER SHEET
2. SUMMARY OF QUANTITIES AND GENERAL NOTES
3. 400W HORIZONTAL MOUNT LUMINAIRE PERFORMANCE TABLE AND AND POLE IDENTIFICATION SIGN PANEL DETAILS
- 4-6. LIGHTING REPLACEMENT PLANS

STANDARDS

| | | |
|-----------|-----------|-----------|
| 280001-07 | 701101-04 | 701106-02 |
| 701400-07 | 701401-08 | 701411-08 |
| 701428 | 701456-03 | 821101 |
| 830001-02 | 836001-02 | 838001 |



FULL SIZE PLANS HAVE BEEN PREPARED USING STANDARD ENGINEERING SCALES. REDUCED SIZED PLANS WILL NOT CONFORM TO STANDARD SCALES. IN MAKING MEASUREMENTS ON REDUCED PLANS, THE ABOVE SCALES MAY BE USED.

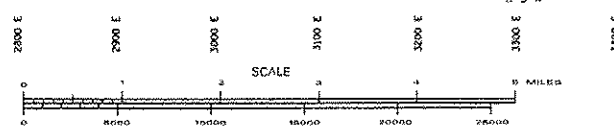
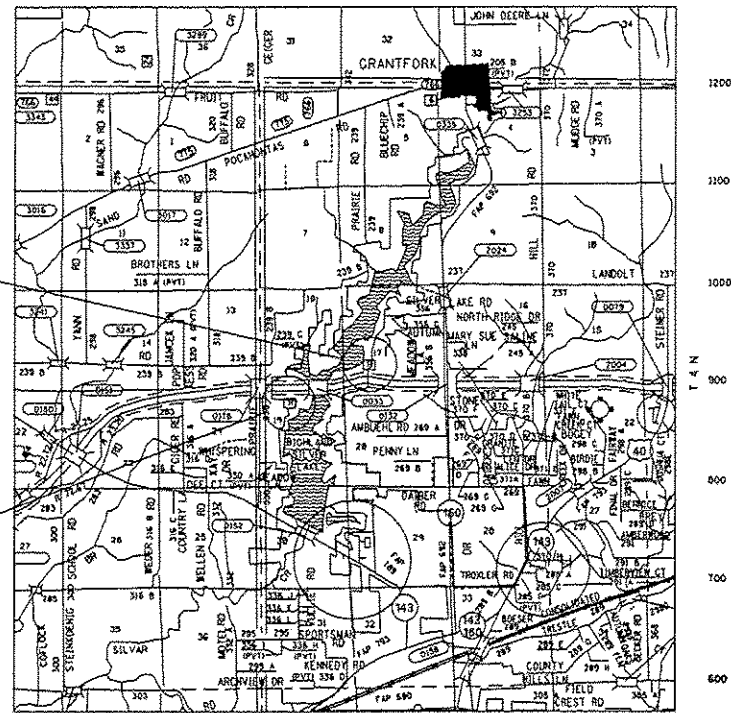
J.U.L.I.E.
JOINT UTILITY LOCATION INFORMATION FOR EXCAVATION
1-800-892-0123
OR 811

PROJECT ENGINEER: P. LEBEAU 618-346-3179
SQUAD LEADER: M. PRESTON 618-346-3143

CONTRACT NO. 76G77

I-70 WESTBOUND SITE
SALINE TOWNSHIP
STA. 1626+00 TO STA. 1667+00

I-70 EASTBOUND SITE
SALINE TOWNSHIP
STA. 1595+00 TO STA. 1626+00



GROSS LENGTH = 7200 FT. = 1.3636 MILE
NET LENGTH = 7200 FT. = 1.3636 MILE

STATE OF ILLINOIS
DEPARTMENT OF TRANSPORTATION
DIVISION OF HIGHWAYS

SUBMITTED Dec 2 20 13
Jeffrey Kain
DEPUTY DIRECTOR OF HIGHWAYS, REGION FIVE ENGINEER

March 21 20 14
John D. Baranzelli
ENGINEER OF DESIGN AND ENVIRONMENT

March 21 20 14
Omer Osman
DIRECTOR OF HIGHWAYS, CHIEF ENGINEER

PRINTED BY THE AUTHORITY
OF THE STATE OF ILLINOIS