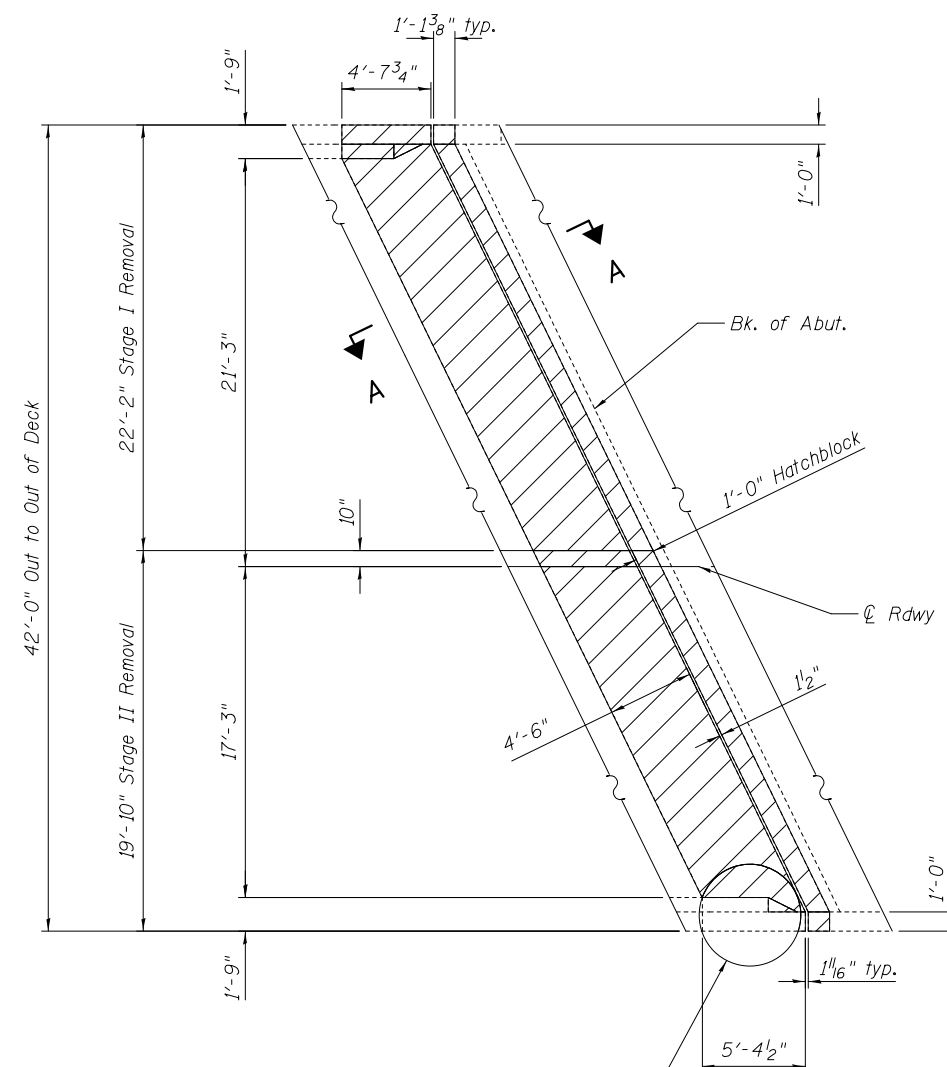


Rail posts east of joint are to be removed, stored and re-installed. Cost included with Concrete Superstructure. (Typ.)

**CONCRETE REMOVAL**

**PIER #15**



Rail posts are to be removed, stored and re-installed. Cost included with Concrete Superstructure. (Typ.)

**CONCRETE REMOVAL**

**E. ABUT.**

Note:  
See sheet 12 of 22 for Section A-A & C-C.

DESIGNED - A.Y.V.	EXAMINED _____	DATE - _____
CHECKED - _____	ENGINEER OF STRUCTURAL SERVICES	
DRAWN - A.Y.V.	PASSED _____	REVISED _____
CHECKED - _____	ENGINEER OF BRIDGES AND STRUCTURES	REVISED _____

**STATE OF ILLINOIS  
DEPARTMENT OF TRANSPORTATION**

**JOINT REMOVAL (Pier 15 & E. ABUT.)  
SN 014-0058**

SHEET NO. 6 OF 22 SHEETS

F.A.P. RTE.	SECTION	COUNTY	TOTAL SHEETS	SHEET NO.
327	14-14B-I	CLINTON	27	11
CONTRACT NO. 76G91				

ILLINOIS FED. AID PROJECT