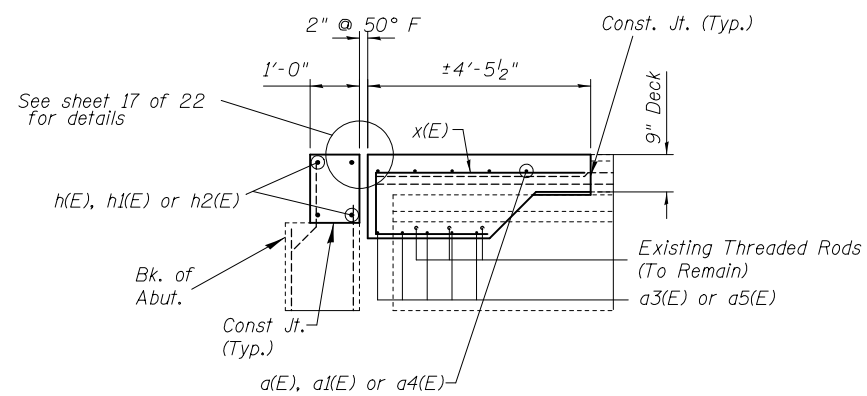


SECTION A-A

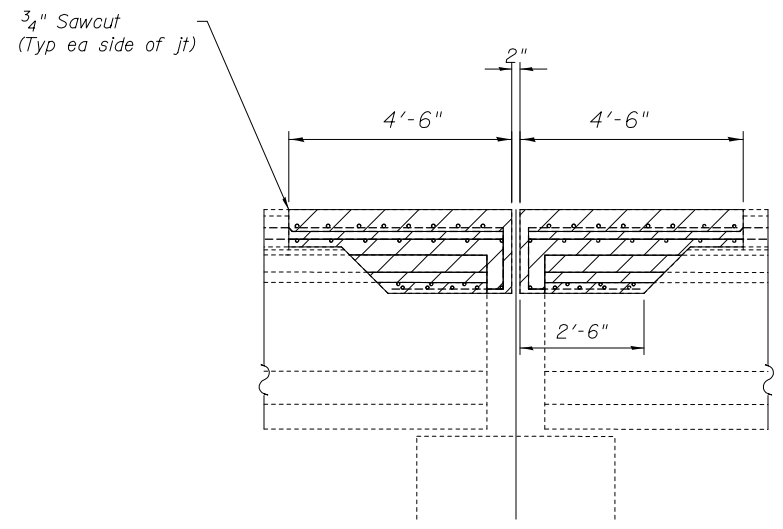


SECTION B-B

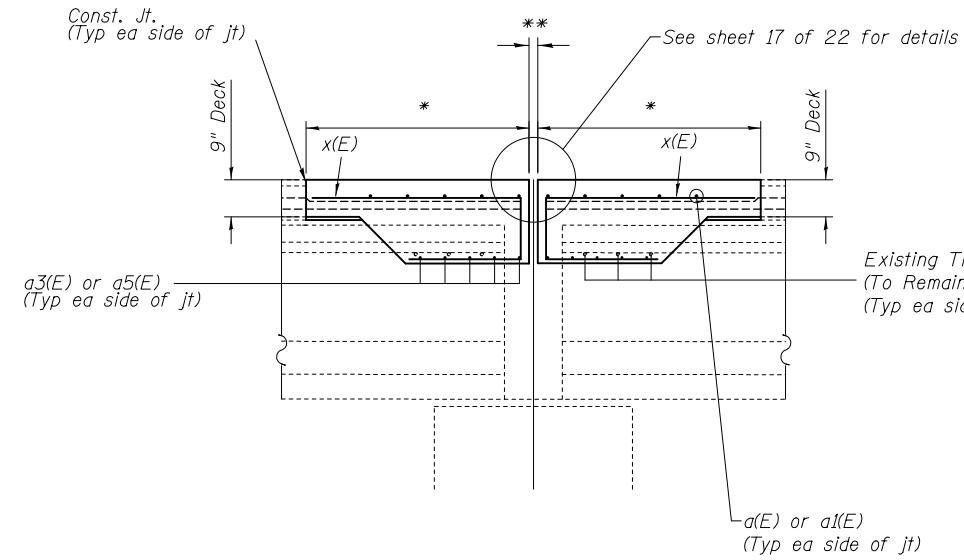
Bar x(E) to be placed parallel to ϕ of Beam

ABUTMENTS

All dimensions are at right angle to jt.



SECTION C-C



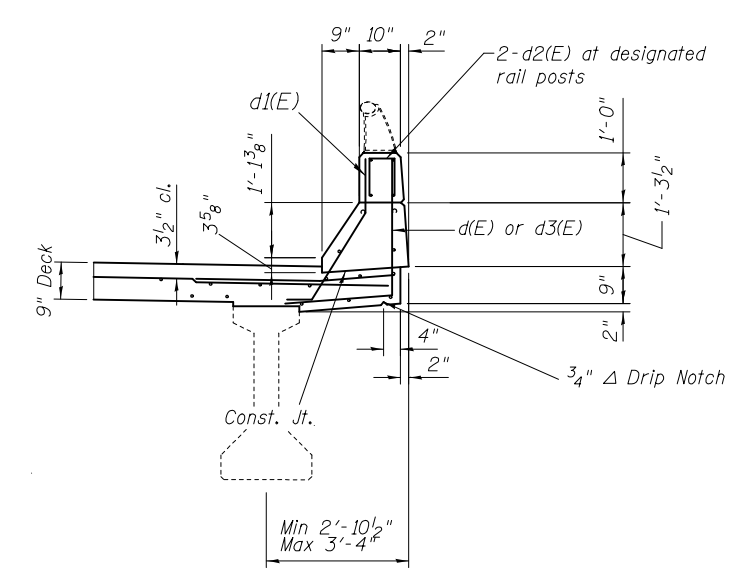
SECTION D-D

Bar x(E) to be placed parallel to ϕ of Beam

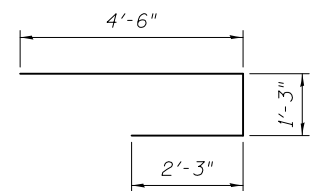
PIER 5, 10 & 15

All dimensions are at right angle to jt.

- * Pier 5 & 15 = $\pm 4'-5\frac{3}{4}"$
- Pier 10 = $\pm 4'-5\frac{7}{8}"$
- ** Pier 5 & 15 = $2\frac{5}{8}" \text{ @ } 50^\circ F$
- Pier 10 = $2\frac{3}{8}" \text{ @ } 50^\circ F$



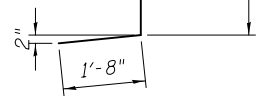
PARAPET SECTION



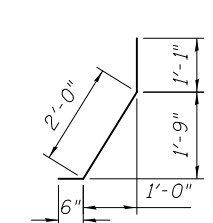
BAR x(E)



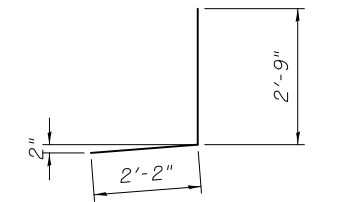
BAR d2(E)



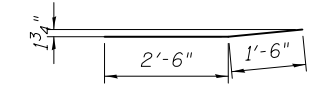
BAR d(E)



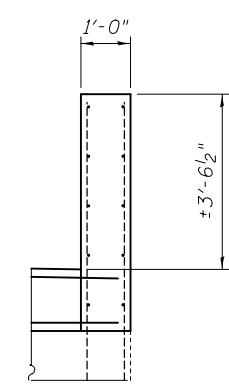
BAR d1(E)



BAR d3(E)



BAR a2(E)



SECTION E-E

BILL OF MATERIAL

Bar	No.	Size	Length	Shape
a(E)	40	#7	23'-0"	—
a1(E)	35	#7	22'-7"	—
a2(E)	64	#6	4'-0"	—
a3(E)	160	#6	7'-6"	—
a4(E)	5	#7	23'-6"	—
a5(E)	80	#6	3'-5"	—
d(E)	66	#4	4'-5"	└
d1(E)	73	#5	3'-7"	└
d2(E)	24	#4	2'-1"	└
d3(E)	22	#4	4'-11"	└
h(E)	4	#6	22'-11"	—
h1(E)	8	#6	23'-2"	—
h2(E)	4	#6	22'-0"	—
x(E)	520	#6	8'-0"	└
Concrete Removal			Cu. Yd.	87.9
Concrete Superstructure			Cu. Yd.	87.4
Reinforcement Bars, Epoxy Coated			Lbs.	13700

Reinforcement bars designated (E) shall be epoxy coated.

DESIGNED - A.Y.V.	EXAMINED	DATE -
CHECKED -	ENGINEER OF STRUCTURAL SERVICES	
DRAWN - A.Y.V.	PASSED	REVISED
CHECKED -	ENGINEER OF BRIDGES AND STRUCTURES	REVISED

**STATE OF ILLINOIS
DEPARTMENT OF TRANSPORTATION**

**JOINT DETAILS
SN 014-0058**

SHEET NO. 12 OF 22 SHEETS

F.A.P. RTE.	SECTION	COUNTY	TOTAL SHEETS	SHEET NO.
327	14-14B-I	CLINTON	27	17
CONTRACT NO. 76G91				
ILLINOIS FED. AID PROJECT				