

STATE OF ILLINOIS
DEPARTMENT OF TRANSPORTATION
DIVISION OF HIGHWAYS

**PROPOSED
HIGHWAY PLANS**

FAP ROUTE 327 (US 50)
SECTION 14-14B-1
BRIDGE PREVENTATIVE MAINTENANCE
CLINTON COUNTY

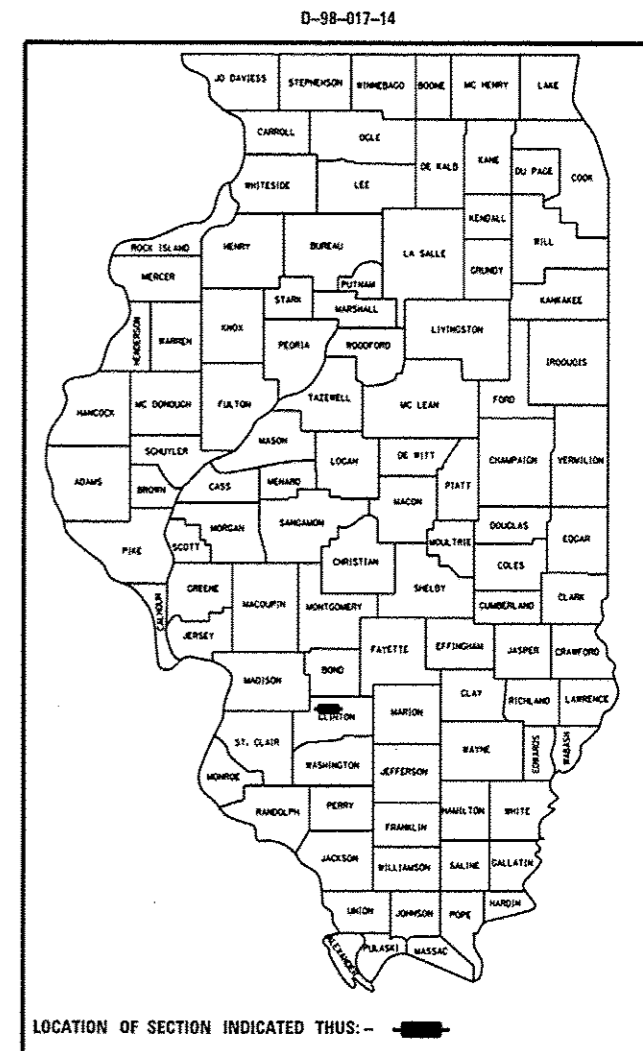
F.A.P. RTE.	SECTION	COUNTY	TOTAL SHEETS	SHEET NO.
327	14-14B-1	CLINTON	27	1
ILLINOIS		CONTRACT NO. 76G91		

FOR INDEX OF SHEETS, SEE SHEET NO. 2

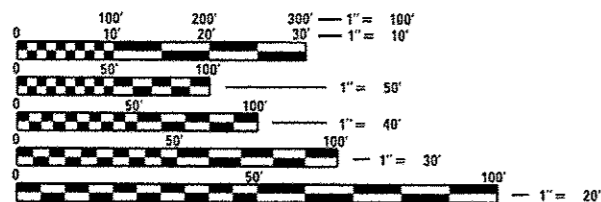
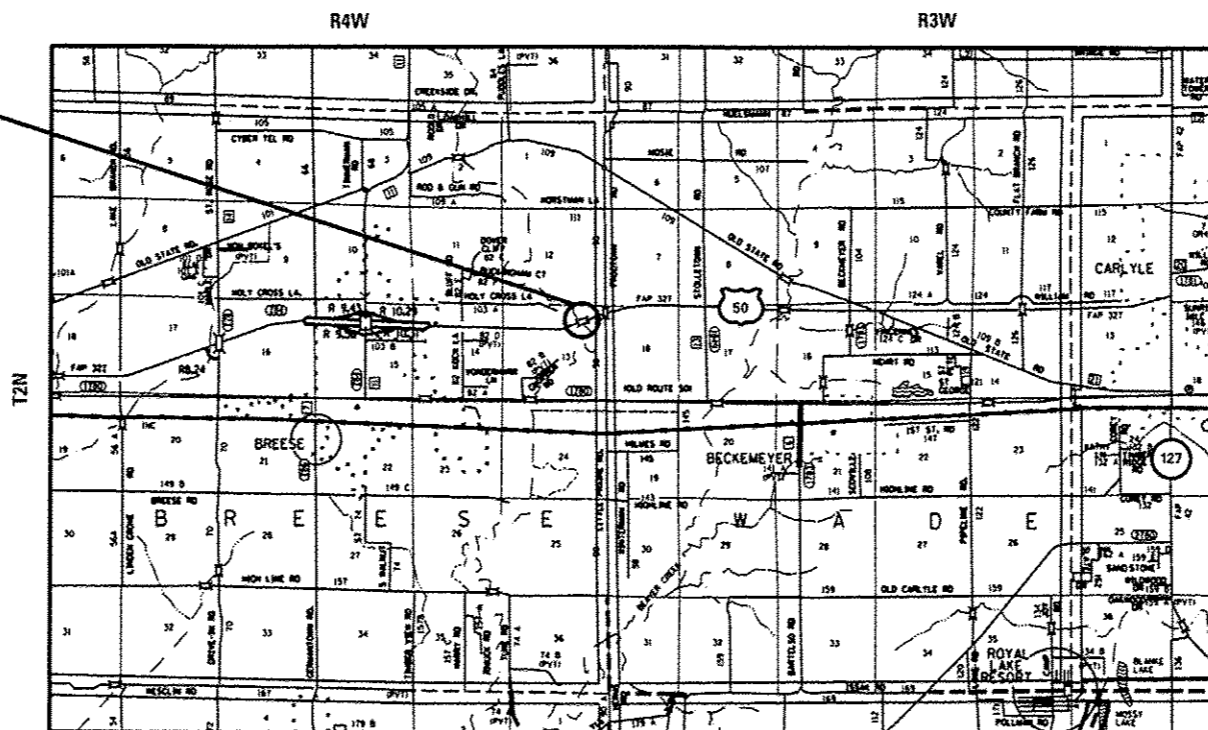
TRAFFIC DATA

2013 ADT = 6000 (ACTUAL)
2014 ADT = 6100 (ESTIMATED)
2034 ADT = 7400 (ESTIMATED)
SU = 5.0% MU = 9.2%

C-98-017-14



**BRIDGE REPAIR
OVER SHOAL CREEK
STA 3206 + 00
SN 014-0058
BEGIN STA 3200 + 08.79
END STA 3212 + 02.58**



FULL SIZE PLANS HAVE BEEN PREPARED USING STANDARD ENGINEERING SCALES. REDUCED SIZED PLANS WILL NOT CONFORM TO STANDARD SCALES. IN MAKING MEASUREMENTS ON REDUCED PLANS, THE ABOVE SCALES MAY BE USED.

J.U.L.I.E.
JOINT UTILITY LOCATION INFORMATION FOR EXCAVATION
1-800-892-0123
OR 811

DESIGN DESIGNATION

N/A

GROSS LENGTH = 1185 FT. = 0.224 MILE
NET LENGTH = 1185 FT. = 0.224 MILE

LATITUDE 38.62139 LONGITUDE -89.48609

PROJECT ENGINEER: PATTI LEBEAU (618) 346-3179
PROJECT MANAGER: REBECCA THARP (618) 346-3323

CONTRACT NO. 76G91

STATE OF ILLINOIS
DEPARTMENT OF TRANSPORTATION
DIVISION OF HIGHWAYS

SUBMITTED February 7, 2014
John D. Paranzelli, PE, Jr.
DEPUTY DIRECTOR OF HIGHWAYS, REGION 5 ENGINEER

March 21, 2014
John D. Paranzelli, PE, Jr.
acting ENGINEER OF DESIGN AND ENVIRONMENT

March 21, 2014
Omer Osman, PE, Jr.
DIRECTOR OF HIGHWAYS, CHIEF ENGINEER

**PRINTED BY THE AUTHORITY
OF THE STATE OF ILLINOIS**