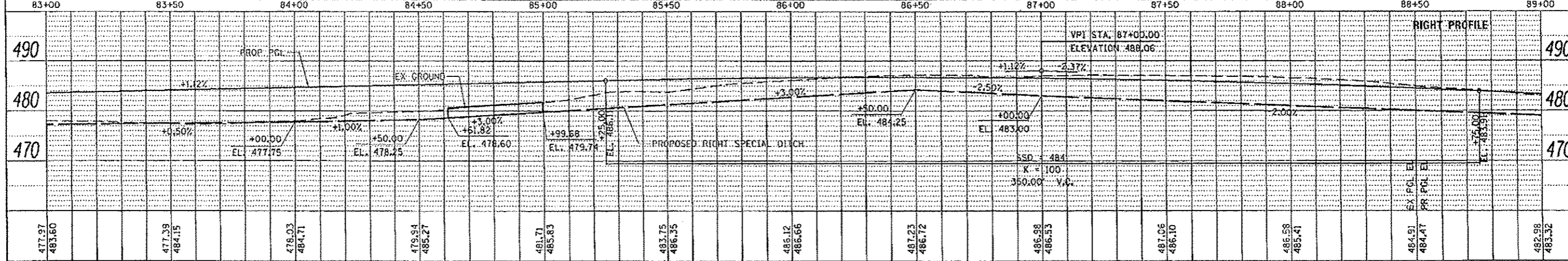
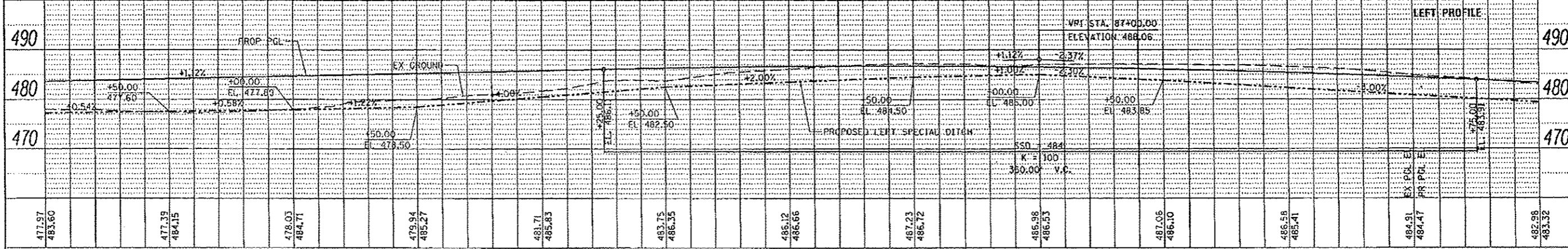
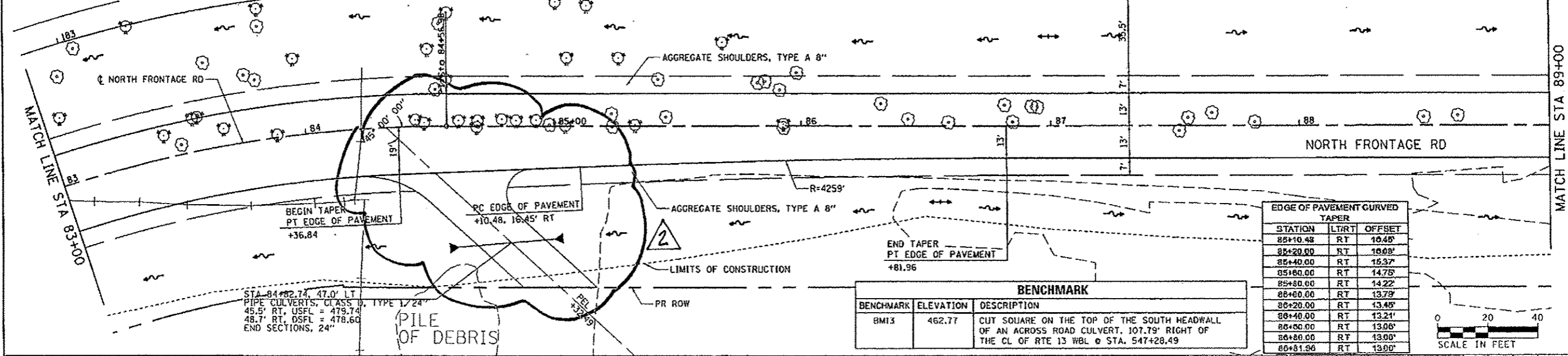


- NOTES:
- FOR ADDITIONAL REMOVAL ITEMS, SEE PAVEMENT MARKING AND SIGNING DRAWINGS AND SCHEDULE DRAWINGS.
  - FOR ADDITIONAL SHARED USE PATH INFORMATION, SEE SHARED USE PATH ROADWAY, DRAINAGE AND UTILITY PLANS.
  - FOR CLARITY, ONLY VARIABLE DEPTH DITCHES ARE SHOWN ON THE PROFILE. REFER TO THE TYPICAL SECTIONS AND CROSS SECTIONS FOR DEPENDENT DITCH INFORMATION.



FILE NAME = c:\pwork\pwork\lavender\ba\036361\B107	USER NAME = #USER# 221\ht\pinoff-27.dgn	DESIGNED - KN	REVISIONS -	<b>STATE OF ILLINOIS</b> <b>DEPARTMENT OF TRANSPORTATION</b>	<b>ROADWAY, DRAINAGE AND UTILITY PLAN AND PROFILE</b> <b>NORTH FRONTAGE ROAD</b>	F.A.P. RTE. 331	SECTION 10-31R-2, N-4, TS-4, BOX-1	COUNTY WILLIAMSON	TOTAL SHEETS 733	SHEET NO. 161	
PLF SCALE = 40,000' / 1"	PLF DATE = 2/18/2014	CHECKED - AS	REVISIONS -			SCALE:	SHEET NO. 37 OF 69 SHEETS	STA. 83+00.00 TO STA. 89+00.00	DRAWING NO. PL-37	CONTRACT NO. 7822	ILLINOIS FED. AID PROJECT
		DRAWN -	REVISIONS -								
		CHECKED -	REVISIONS -								

2 Rev. 4-21-14