

SIDEWALK SCHEDULE

LOCATION			PORTLAND CEMENT CONCRETE SIDEWALK 4 INCH 50 FT	PORTLAND CEMENT CONCRETE SIDEWALK 6 INCH 50 FT	DETECTABLE WARNINGS 50 FT	REMARKS
STATION	TO	STATION				
WOLF CREEK ROAD						
90+38.79	-	98+60.08		9,429.5	60.0	
100+75.92	-	103+25.70		2,695.5	20.0	
103+25.70	-	109+67.28		6,841.0	40.0	
NORTH FRONTAGE ROAD						
22+55.43	-	27+25.23		4,639.5	10.0	
27+25.23	-	28+01.14		579.0	10.0	
50+75.00	-	52+25.85		1,317.5	14.0	
52+25.85	-	53+83.13		1,198.0	14.0	
53+83.13	-	69+59.77		15,242.0	140.0	
69+59.77	-	74+40.74		4,872.0		
74+40.74	-	96+51.25		21,952.0	50.0	
96+51.25	-	97+02.92		1,250.0	200.0	
97+02.92	-	104+95.83		7,547.5	40.0	
104+95.83	-	111+62.48		6,560.5	20.0	
MAIN STREET NORTH						
5+84.08	-	14+78.52		3,880.5	10.0	
PROJECT TOTALS			3,880.5	84,124.0	628.0	

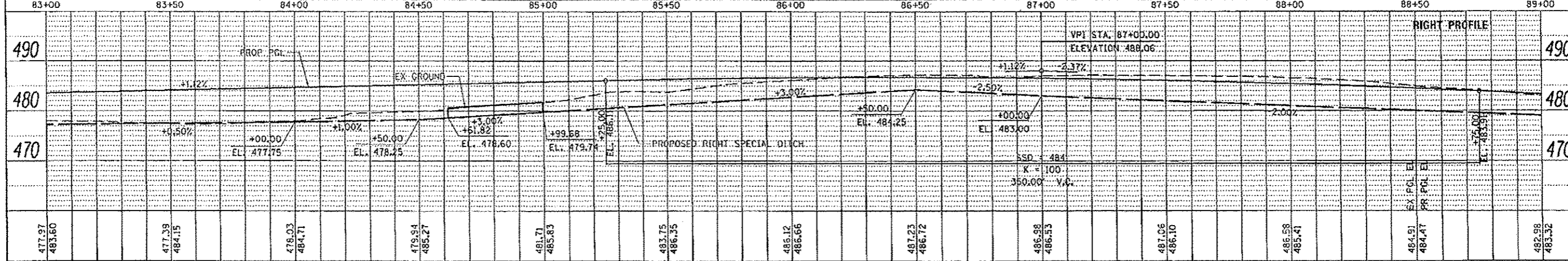
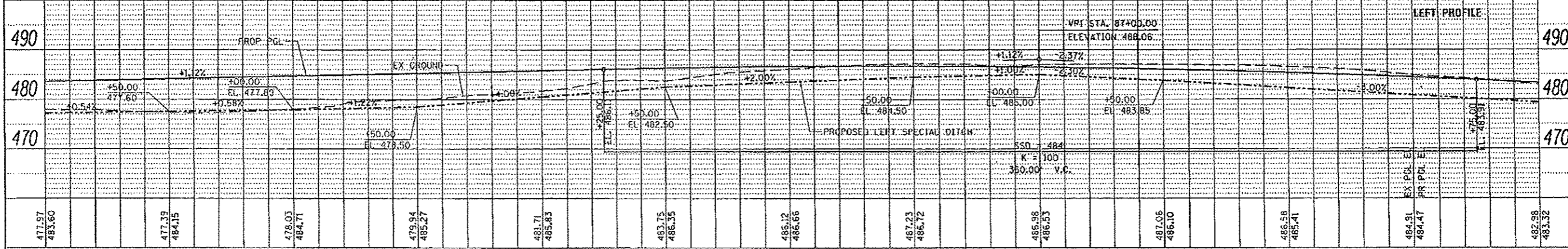
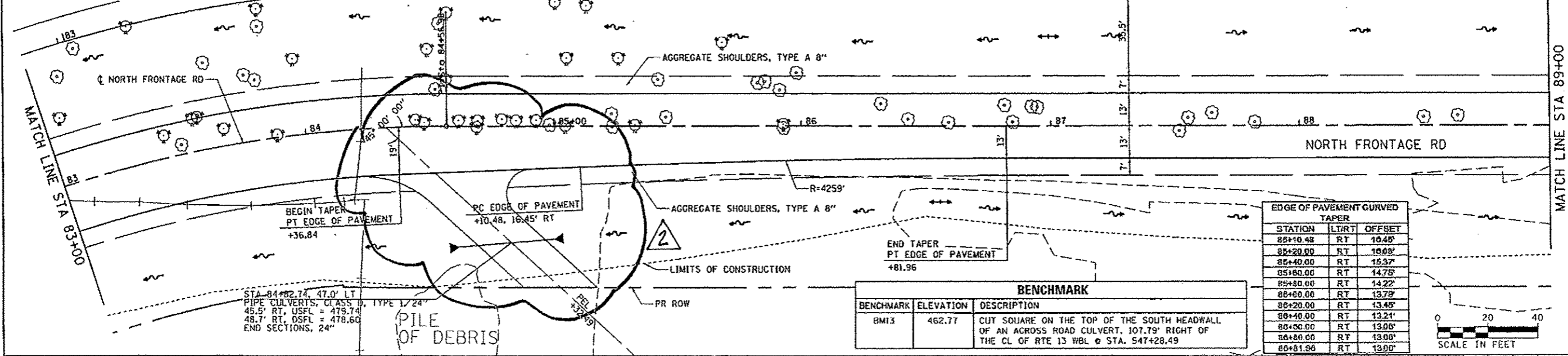
BOLLARD SCHEDULE

LOCATION		FOLD DOWN BOLLARDS		BOLLARDS
STATION	OFFSET	EACH	EACH	EACH
WOLF CREEK ROAD				
91+17.00	37.90 LT			1
91+19.17	42.47 LT	1		
91+21.37	47.04 LT			1
95+66.59	48.12 LT			1
95+64.91	52.71 LT	1		
95+63.27	57.32 LT			1
96+64.97	37.00 LT			1
96+64.97	42.00 LT	1		
96+64.97	47.00 LT			1
102+63.49	37.00 LT			1
102+63.49	42.00 LT	1		
102+63.49	47.00 LT			1
103+69.05	51.51 LT			1
103+71.42	55.92 LT	1		
103+73.79	60.32 LT			1
108+93.55	52.80 LT			1
108+91.75	57.47 LT	1		
108+89.94	62.13 LT			1
NORTH FRONTAGE ROAD				
26+74.06	45.58 LT			1
26+75.68	40.85 LT	1		
26+77.30	36.12 LT			1
28+01.14	30.00 LT			1
28+01.14	25.00 LT	1		
28+01.14	20.00 LT			1
51+65.30	50.79 LT			1
51+66.89	46.05 LT	1		
51+68.49	41.31 LT			1
53+08.84	36.00 LT			1
53+08.84	31.00 LT	1		
53+08.84	26.00 LT			1
68+41.21	31.80 LT			1
68+42.21	26.90 LT	1		
68+43.20	22.00 LT			1
69+31.21	34.00 LT			1
69+31.21	29.00 LT	1		
69+31.21	24.00 LT			1
96+11.75	47.50 LT			1
96+11.75	42.50 LT	1		
96+11.75	37.50 LT			1
97+02.61	37.50 RT			1
97+02.61	42.50 RT	1		
97+02.61	47.50 RT			1
102+14.05	56.73 RT			1
102+14.13	61.73 RT	1		
102+14.22	66.73 RT			1
102+78.04	55.87 RT			1
102+78.13	60.87 RT	1		
102+78.22	65.87 RT			1
111+41.44	19.00 RT			1
111+41.44	24.00 RT	1		
111+41.44	29.00 RT			1
PROJECT TOTALS		17		34

2

2 Rev. 4-21-14

- NOTES:
- FOR ADDITIONAL REMOVAL ITEMS, SEE PAVEMENT MARKING AND SIGNING DRAWINGS AND SCHEDULE DRAWINGS.
 - FOR ADDITIONAL SHARED USE PATH INFORMATION, SEE SHARED USE PATH ROADWAY, DRAINAGE AND UTILITY PLANS.
 - FOR CLARITY, ONLY VARIABLE DEPTH DITCHES ARE SHOWN ON THE PROFILE. REFER TO THE TYPICAL SECTIONS AND CROSS SECTIONS FOR DEPENDENT DITCH INFORMATION.



FILE NAME = c:\pwork\pwrda\lavender\ba\0363618\0363618.dwg	USER NAME = #USER#	DESIGNED - KN	REVISIONS -	STATE OF ILLINOIS DEPARTMENT OF TRANSPORTATION	ROADWAY, DRAINAGE AND UTILITY PLAN AND PROFILE NORTH FRONTAGE ROAD	F.A.P. SECTION COUNTY TOTAL SHEETS 331 11-31R-2, N-4, TS-4, H&K-1 WILLIAMSON 733 161 DRAWING NO. PL-37 CONTRACT NO. 7822 ILLINOIS FED. AID PROJECT
PLT SCALE = 40,000' / 1"	PLT DATE = 2/18/2014	CHECKED - AS	REVISIONS -			
		DRAWN -	REVISIONS -			
		CHECKED -	REVISIONS -			

SCALE: SHEET NO. 37 OF 69 SHEETS STA. 83+00.00 TO STA. 89+00.00

2 Rev. 4-21-14

- NOTES:**
- FOR ADDITIONAL REMOVAL ITEMS, SEE PAVEMENT MARKING AND SIGNING DRAWINGS AND SCHEDULE DRAWINGS.
 - FOR ADDITIONAL SHARED USE PATH INFORMATION, SEE SHARED USE PATH ROADWAY, DRAINAGE AND UTILITY PLANS.
 - FOR CLARITY, ONLY VARIABLE DEPTH DITCHES ARE SHOWN ON THE PROFILE. REFER TO THE TYPICAL SECTIONS AND CROSS SECTIONS FOR DEPENDENT DITCH INFORMATION.
 - FOR CURB OUTLET DETAILS, SEE DRAWING NO. RD-02.

BENCHMARK		
BENCHMARK	ELEVATION	DESCRIPTION
BMI4	444.68	CUT SQUARE ON THE TOP OF THE SOUTH HEADWALL OF AN ACROSS ROAD CULVERT. 145.90' RIGHT OF THE CL OF RTE 13 WBL @ STA. 572+12.64

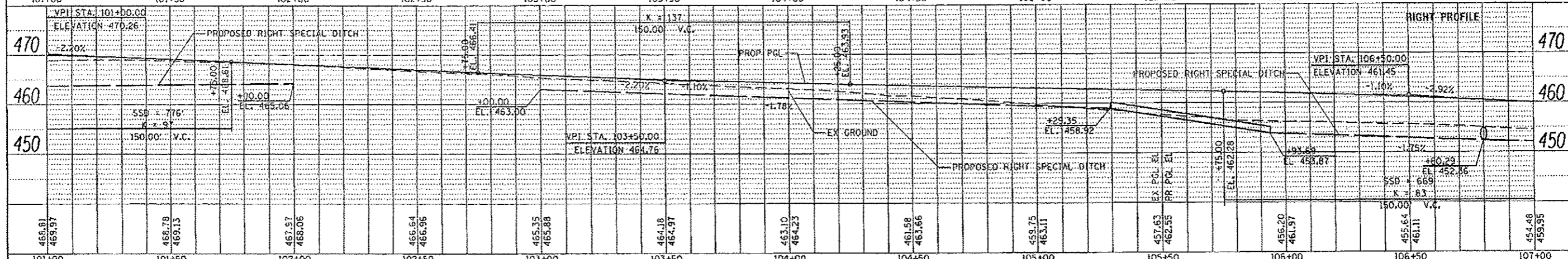
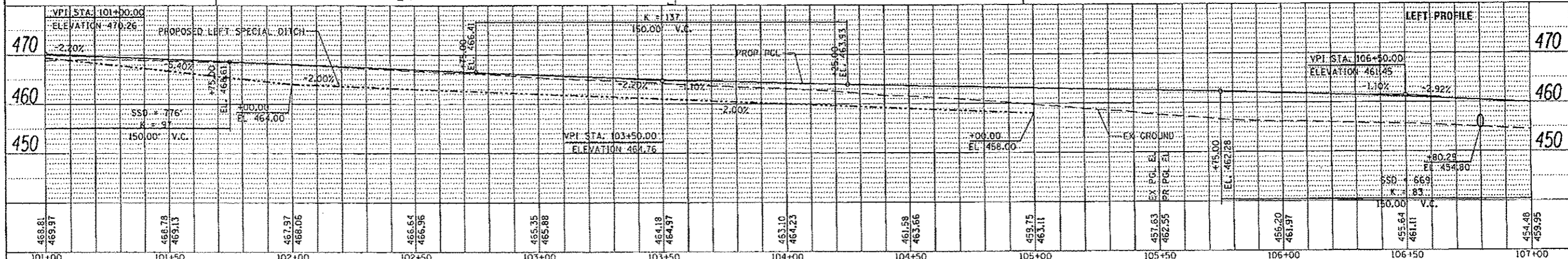
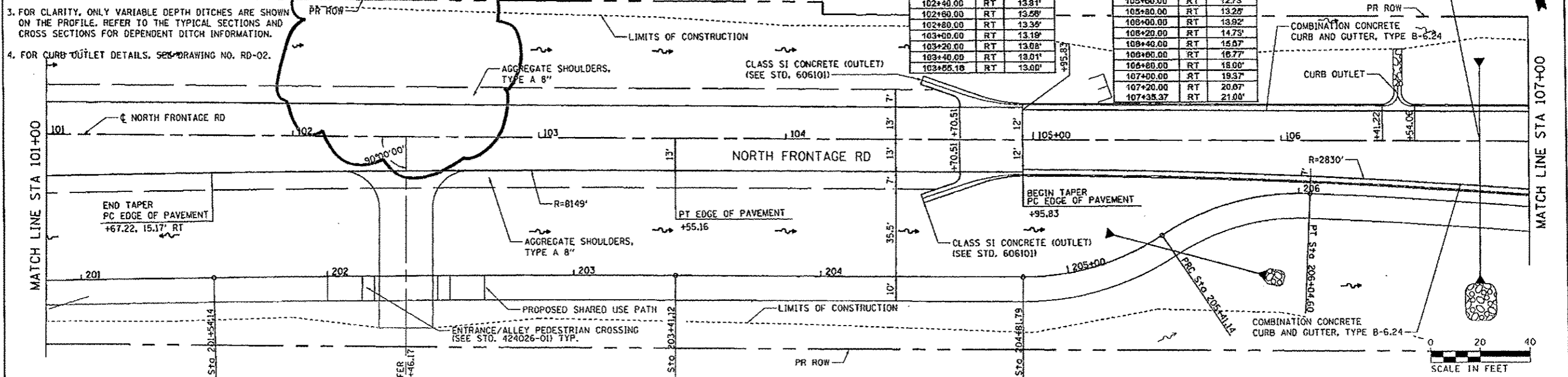
EDGE OF PAVEMENT CURVED TAPER		
STATION	LT/RT	OFFSET
101+07.22	RT	15.17'
101+80.00	RT	14.88'
102+00.00	RT	14.48'
102+20.00	RT	14.12'
102+40.00	RT	13.81'
102+60.00	RT	13.56'
102+80.00	RT	13.36'
103+00.00	RT	13.18'
103+20.00	RT	13.04'
103+40.00	RT	13.01'
103+55.16	RT	13.00'

EDGE OF PAVEMENT CURVED TAPER		
STATION	LT/RT	OFFSET
104+99.83	RT	12.00'
105+00.00	RT	12.00'
105+20.00	RT	12.10'
105+40.00	RT	12.34'
105+60.00	RT	12.73'
105+80.00	RT	13.28'
106+00.00	RT	13.92'
106+20.00	RT	14.75'
106+40.00	RT	15.67'
106+60.00	RT	16.77'
106+80.00	RT	18.00'
107+00.00	RT	19.37'
107+20.00	RT	20.87'
107+35.37	RT	21.00'

STA 105+80.29
 SKEW 0°
 PIPE CULVERT
 CLASS A, TYPE 2 30"
 33.3' LT, DSFL = 454.80
 57.6' RT, DSFL = 452.36
 PRC FLARED END SECTION, 30"

PLAN	DATE
REVISION	
DATE	
BY	
CHECKED	
DATE	
BY	
CHECKED	
DATE	
BY	
CHECKED	
DATE	

PROFILE	DATE
REVISION	
DATE	
BY	
CHECKED	
DATE	
BY	
CHECKED	
DATE	



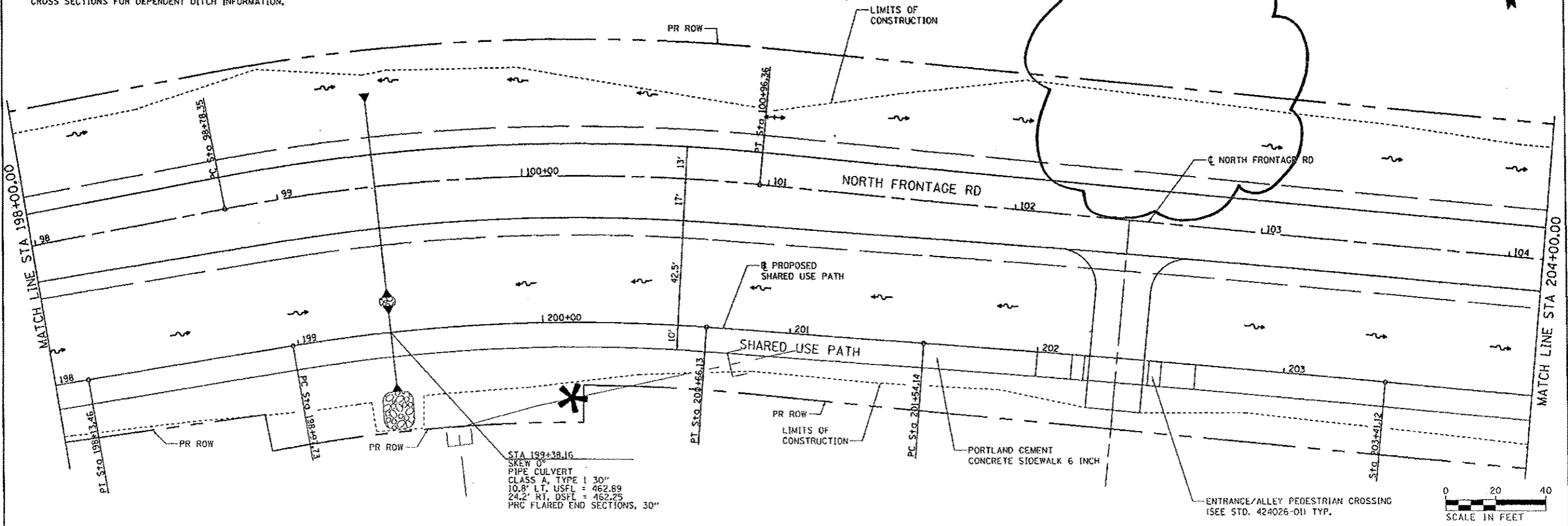
FILE NAME	USER NAME	DESIGNED	REVISED	STATE OF ILLINOIS DEPARTMENT OF TRANSPORTATION	ROADWAY, DRAINAGE AND UTILITY PLAN AND PROFILE NORTH FRONTAGE ROAD	F.A.P. RYE	SECTION	COUNTY	TOTAL SHEETS	SHEET NO.	
1221-nh-plnpr-48.dgn	kn	AS				331	11-31R-2, N-4, YS-4, MEX-1	WILLIAMSON	733	164	
PLOT SCALE = 48.0000' / 1" IN.						DRAWING NO.	PL-40			CONTRACT NO.	78221
PLOT DATE = 2/18/2014						ILLINOIS FED. AID PROJECT					

2 Rev. 4-21-14

NOTE:

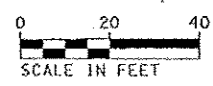
- FOR ADDITIONAL NORTH FRONTAGE RD INFORMATION, SEE NORTH FRONTAGE RD ROADWAY, DRAINAGE AND UTILITY PLANS.
- FOR CLARITY, ONLY VARIABLE DEPTH DITCHES ARE SHOWN ON THE PROFILE. REFER TO THE TYPICAL SECTIONS AND CROSS SECTIONS FOR DEPENDENT DITCH INFORMATION.

BENCHMARK		
BENCHMARK	ELEVATION	DESCRIPTION
BM14	444.68	CUT SQUARE ON THE TOP OF THE SOUTH HEADWALL OF AN ACROSS ROAD CULVERT. 145.90' RIGHT OF THE CL OF RTE 13 WBL @ STA. 572+12.64



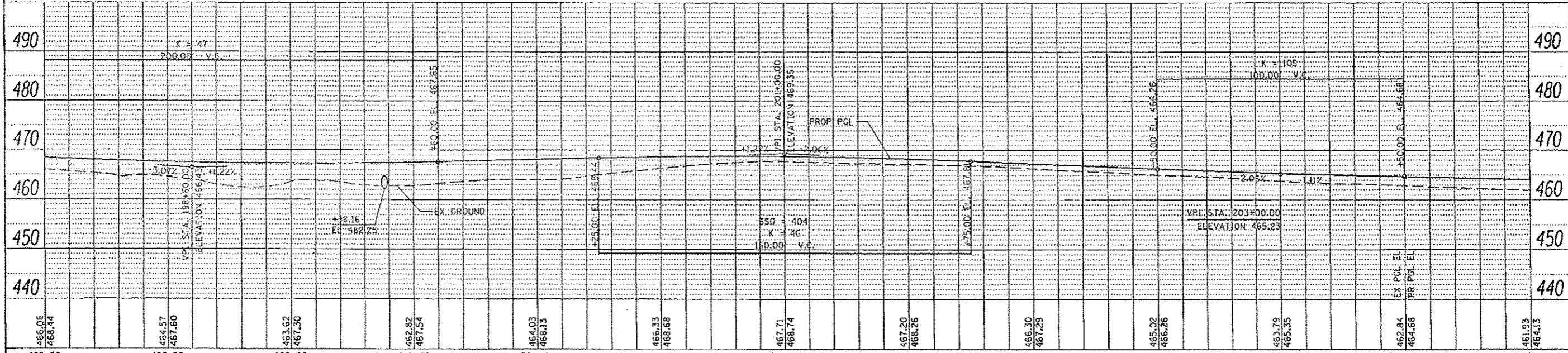
STA 199+38.16
 SKEW OF
 PIPE CULVERT
 CLASS A, TYPE 1 30"
 10.8' LT, USFL = 462.89
 24.2' RT, DSFL = 462.25
 PRC FLARED END SECTIONS, 30"

ENTRANCE/ALLEY PEDESTRIAN CROSSING
 (SEE STD. 424026-01) TYP.



PLAN	DATE
REVISION	
NOTED	
BY	
DATE	
FILE NAME	

PROFILE	DATE
REVISION	
NOTED	
BY	
DATE	
FILE NAME	



466.06 468.44	464.57 467.60	463.62 467.30	462.82 467.54	464.03 468.13	466.33 468.68	467.71 468.74	467.20 468.26	466.30 467.29	465.02 466.26	463.79 465.35	462.84 464.68	461.93 464.13
198+00	198+50	199+00	199+50	200+00	200+50	201+00	201+50	202+00	202+50	203+00	203+50	204+00

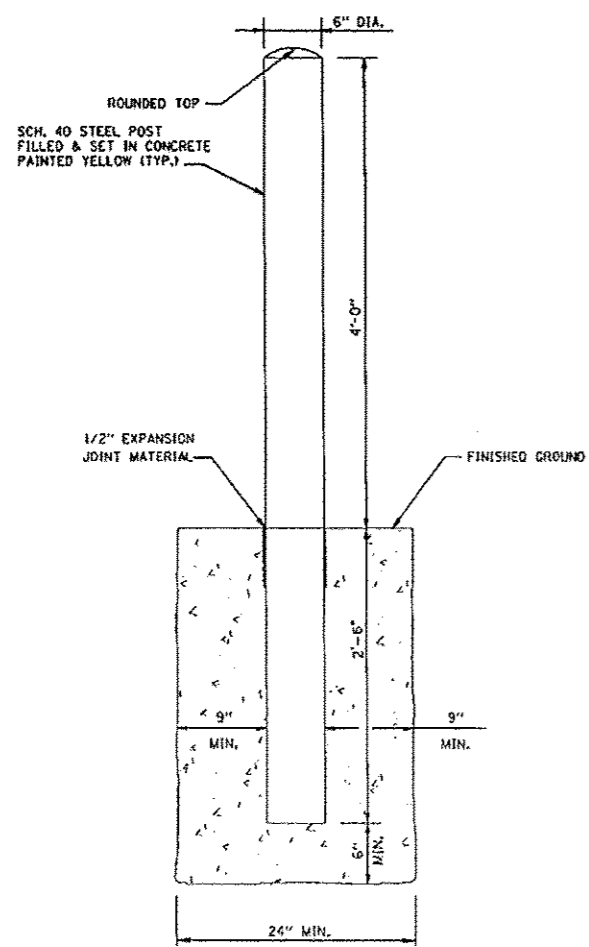
STATE OF ILLINOIS
 DEPARTMENT OF TRANSPORTATION

ROADWAY, DRAINAGE AND UTILITY PLANS
 SHARED USE PATH

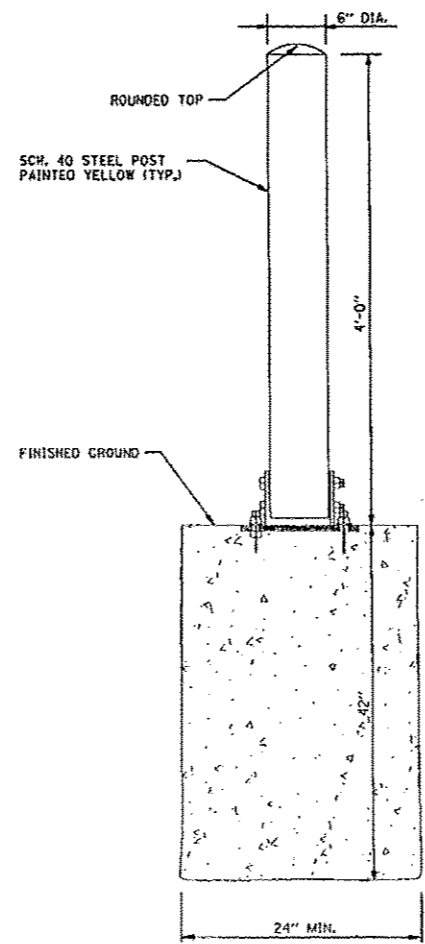
F.A.P. RTE.	SECTION	COUNTY	TOTAL SHEETS	SHEET NO.
331	(1-3)/R-2, N-4, TS-4, HBK-1	WILLIAMSON	733	175
DRAWING NO.	PI-51		CONTRACT NO. 78221	
[ILLINOIS] FED. AID PROJECT				

SCALE: SHEET NO. 51 OF 89 SHEETS STA. 198+00.00 TO STA. 204+00.00

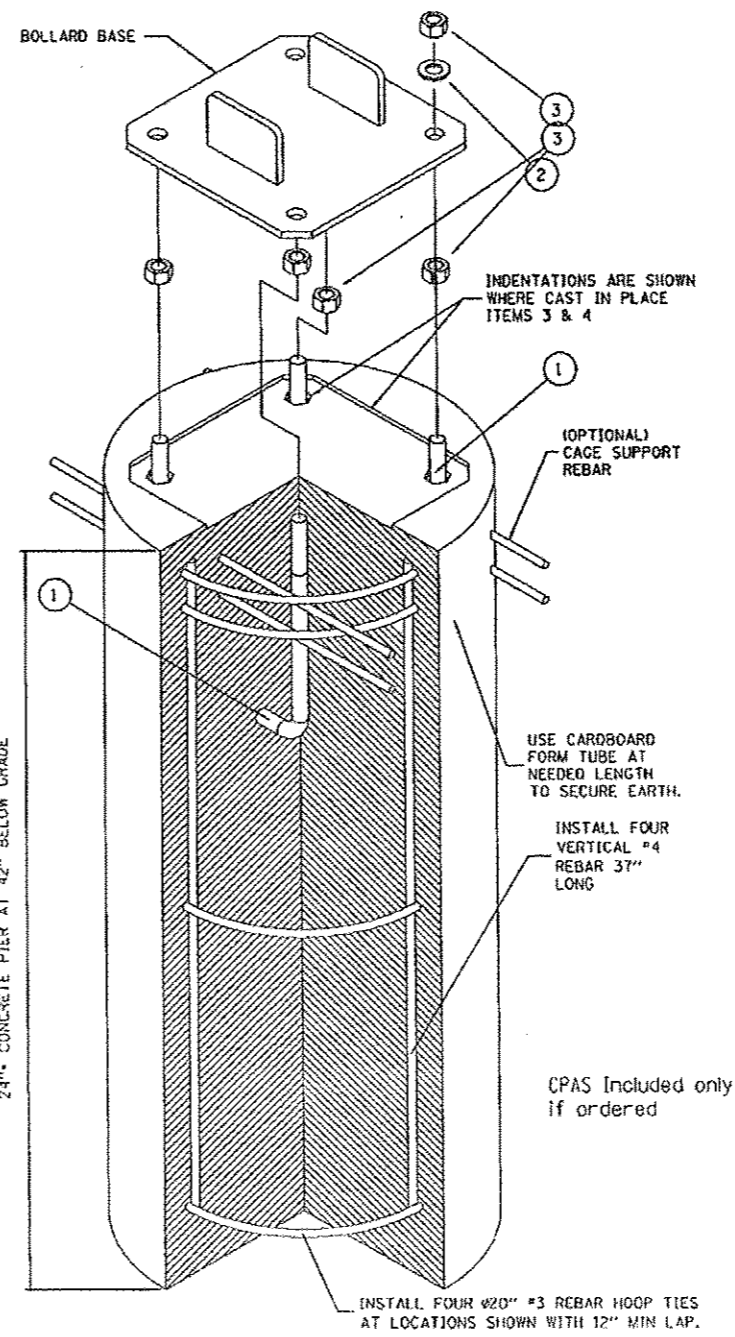
Rev. 4-21-14



6" DIAMETER BOLLARD DETAIL



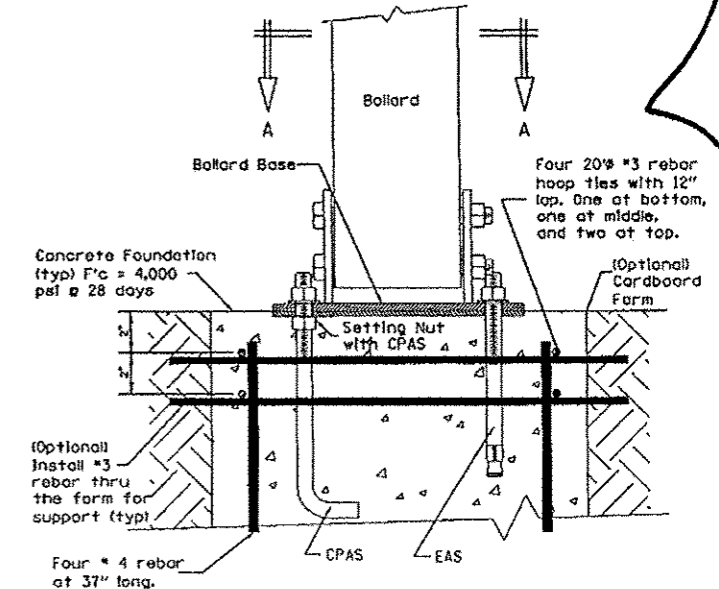
FOLD DOWN BOLLARD DETAIL



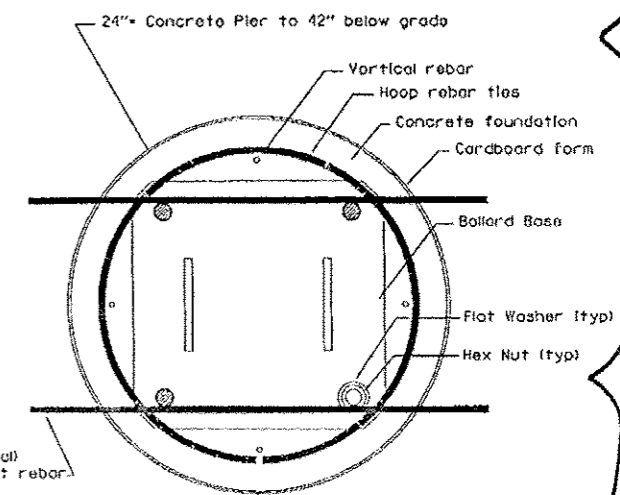
CONCRETE PIER ANCHOR SYSTEM (CPAS)

BILL OF MATERIAL		
ITEM PART #	DESCRIPTION	QTY.
• 9001 CPAS KIT - INCLUDES THE FOLLOWING PART NUMBERS		
1	0002 #3/4" x 12" TYPE L ANCHOR BOLT-H.D.G.	4
2	0007 #3/4" TYPE A FLAT NARROW WASHER GALVANIZED STEEL	4
3	0006 #3/4" HEX NUT GALVANIZED STEEL	8

NOTE: CONCRETE, FORM AND REBAR PROVIDED BY OTHERS



Front Elevation Section



Plan Section "A-A"

FILE NAME =	USER NAME = #US204	DESIGNED - KH	REVISED -
ca:\pwwork\puedot\Novander-ba\06363018\078221\site\details\dd-08.dgn		DRAWN - AS	REVISED -
	PLOT SCALE = 2.0000 "/td> <td>CHECKED -</td> <td>REVISED -</td>	CHECKED -	REVISED -
	PLOT DATE = 2/10/2014	DATE -	REVISED -

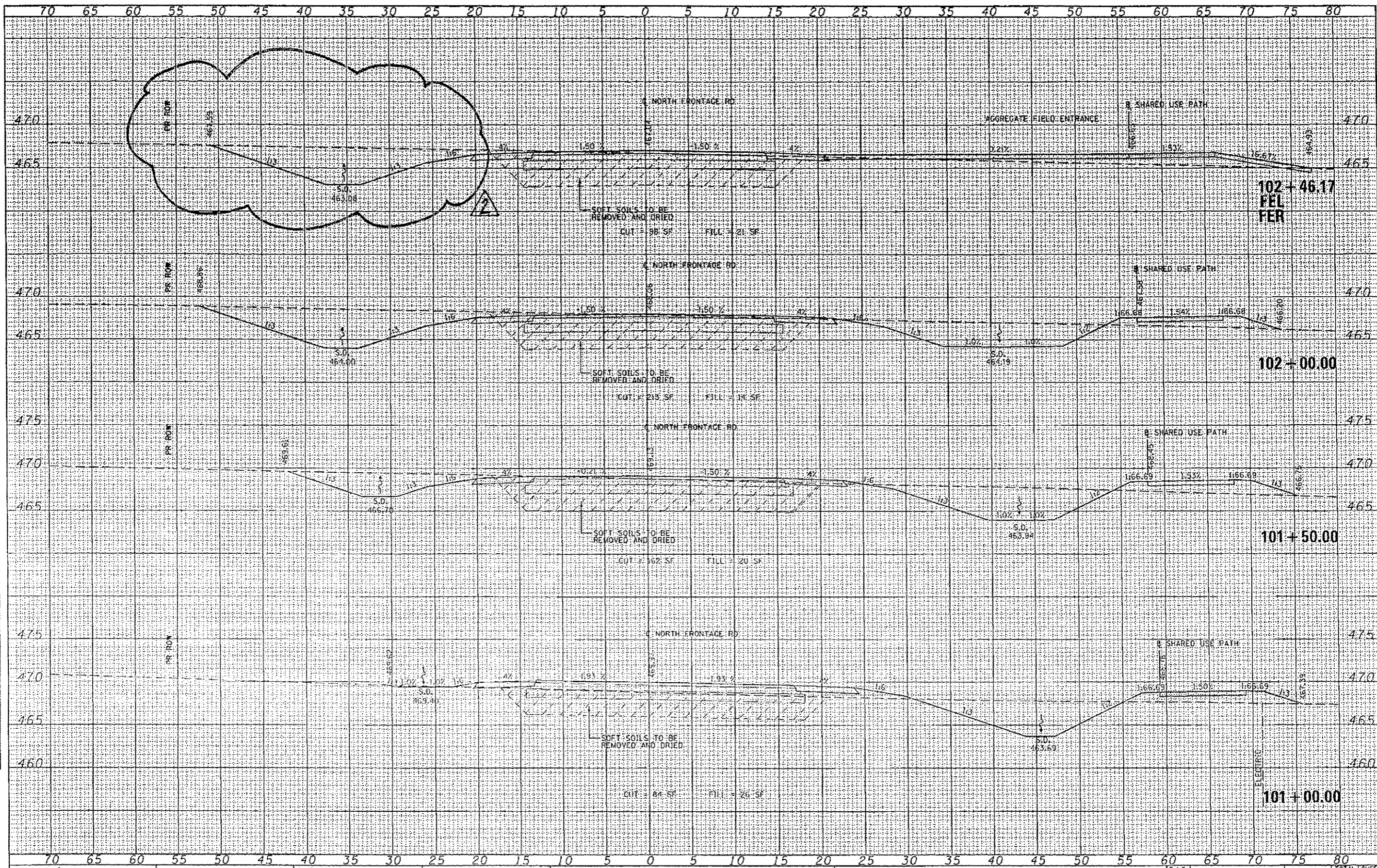
STATE OF ILLINOIS
DEPARTMENT OF TRANSPORTATION

BOLLARD DETAIL

SCALE: SHEET NO. 8 OF 8 SHEETS STA. TO STA.

F.A.P. RTE.	SECTION	COUNTY	TOTAL SHEETS	SHEET NO.
331 (I-31R-2, N-4, IS-4, HEK-1)		WILLIAMSON	733	400
DRAWING NO. DD-08			CONTRACT NO. 78221	
ILLINOIS REG. #10 PROJECT				

Rev. 4-21-14



DATE	
BY	
DESIGNED	
DRAWN	
CHECKED	
DATE	

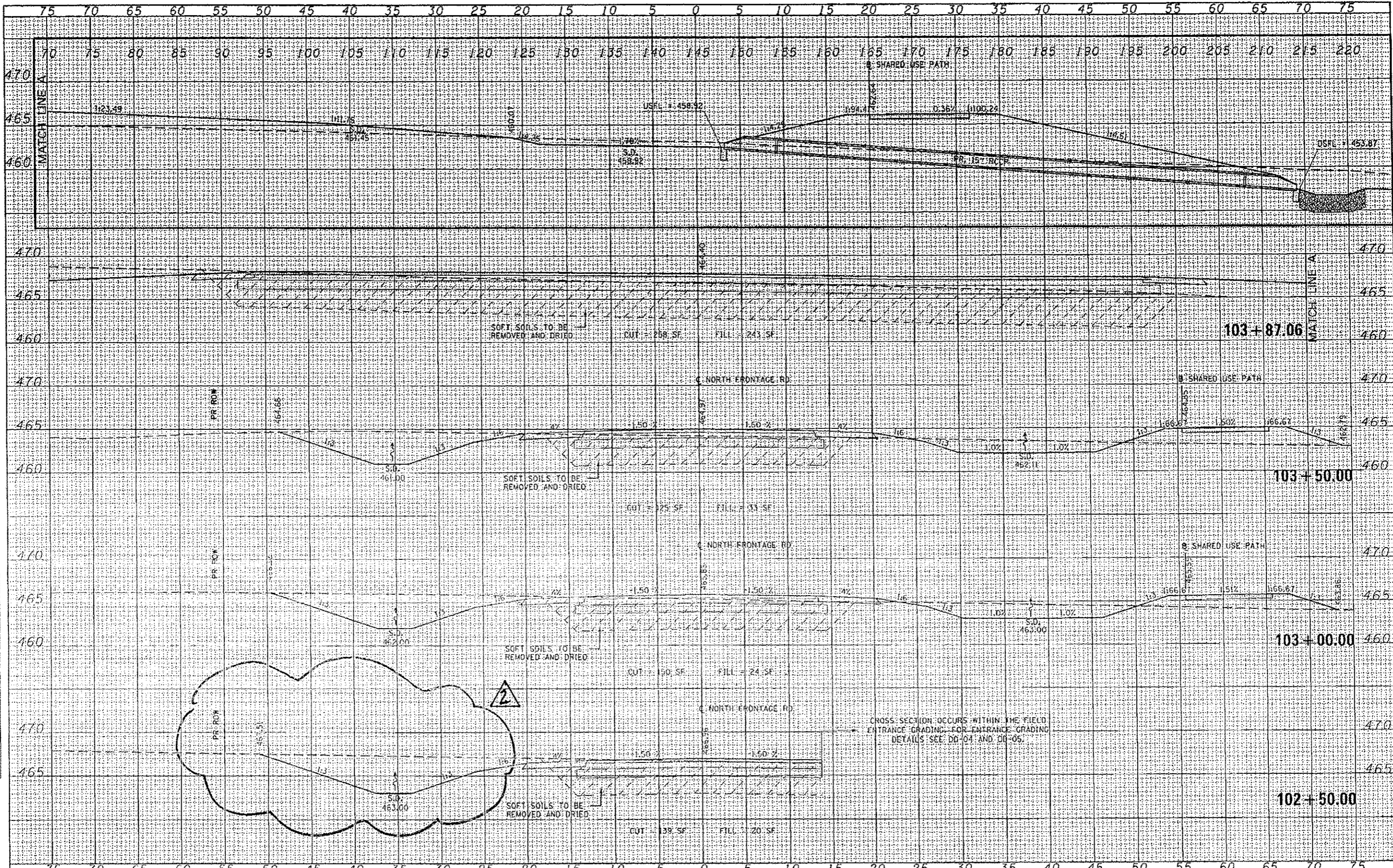
DATE	
BY	
DESIGNED	
DRAWN	
CHECKED	
DATE	

FILE NAME =	USER NAME = BUSCHP	DESIGNED = KN	REVISED =	STATE OF ILLINOIS DEPARTMENT OF TRANSPORTATION	PROPOSED CROSS SECTIONS NORTH FRONTAGE ROAD		F.A.P. RATE =	SECTION	COUNTY	TOTAL SHEETS	SHEET NO.	
c:\pwworkspace\11\avandaba\10363618\10378221	10378221-NorthFrontage.dgn	DRAWN = AS	REVISED =		SCALE:	SHEET NO. 38 OF 58 SHEETS	STA. 101+00.00 TO STA. 102+46.17	331	11-3R-2, N-4, TS-4, HBK-1	WILLIAMSON	733	595
	PLOT SCALE = 10.8880" / 1"	CHECKED =	REVISED =					DRAWING NO.	XS-195			78221
	PLOT DATE = 2/10/2014	DATE	REVISED =					ILLINOIS FED. AID PROJECT				

2 Rev. 4-21-14

DATE	
BY	
FINAL SURVEY	
PLOTTED	
DATE	
NOTE BOOK	
SCALE	

DATE	
BY	
FINAL SURVEY	
PLOTTED	
DATE	
NOTE BOOK	
SCALE	



FILE NAME: c:\pwwork\pwwork\102vanderba\102vanderba\102vanderba.dwg	USER NAME: nuserk	DESIGNED: KH	REVISED:	STATE OF ILLINOIS DEPARTMENT OF TRANSPORTATION	PROPOSED CROSS SECTIONS NORTH FRONTAGE ROAD		F.A.P. RT#:	SECTION:	COUNTY:	TOTAL SHEETS:	SHEET NO.:	
PLotted: 2/17/2014	DATE:	CHECKED:	REVISED:		SCALE:	SHEET NO. 39 OF 58 SHEETS	STA. 102+50.00 TO STA. 104+00.00	331	U-JR-2, H-4, TS-4, H&K-1	WILLIAMSON	733	596
DATE: 2/17/2014	DATE:	DATE:	REVISED:				DRAWING NO. XS-196		[ILLINOIS] FED. AID PROJECT			

2 Rev. 4-21-14

