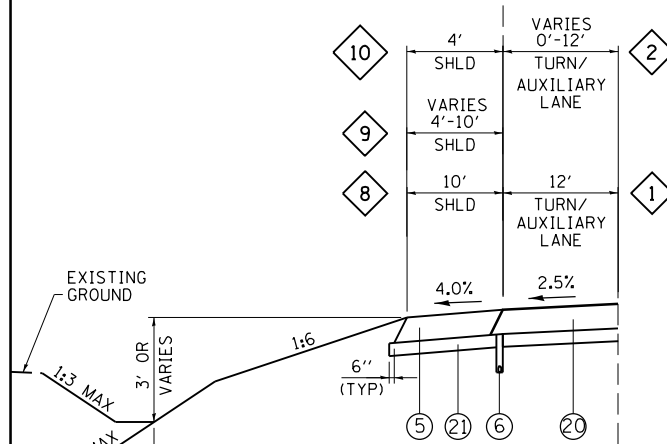


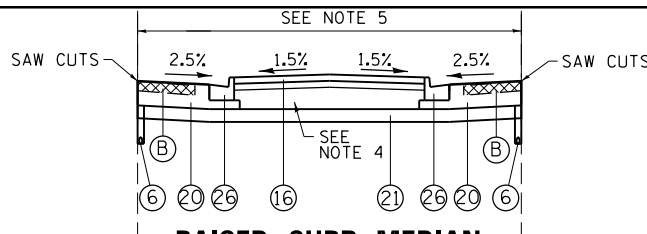
GUARDRAIL SECTION

STA 488+51.96 TO STA 490+39.46



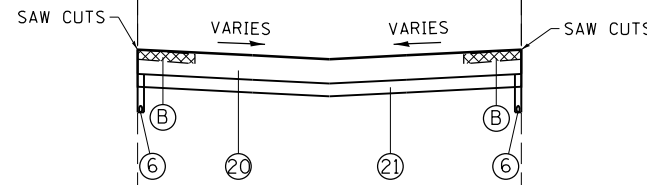
TURN / AUXILIARY LANE

- 1 STA 480+37.10 TO STA 492+29.77
STA 561+17.50 TO STA 564+02.50
STA 587+20.74 TO STA 590+05.74
- 2 STA 564+02.50 TO STA 566+87.50
STA 590+05.74 TO STA 592+90.74
- 8 STA 480+37.10 TO STA 558+74.34
STA 566+87.50 TO STA 584+99.77
- 9 STA 558+74.34 TO STA 559+38.49
STA 565+45.09 TO STA 566+87.50
STA 584+99.77 TO STA 585+59.07
STA 591+48.33 TO STA 592+90.74
- 10 STA 559+38.49 TO STA 565+45.09
STA 585+59.07 TO STA 591+48.33



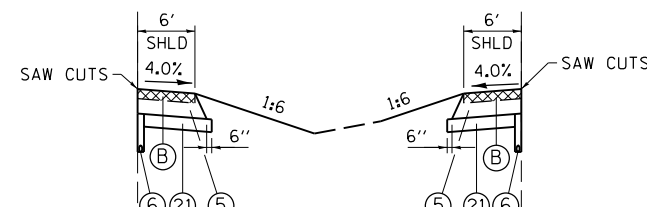
RAISED CURB MEDIAN

STA 559+87.63 TO STA 560+33.73
STA 586+17.17 TO STA 586+79.40
SEE NOTE 5



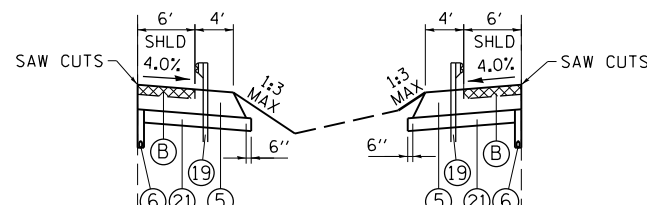
PAVED MEDIAN CROSSOVER

STA 559+67.23 TO STA 559+87.63
STA 560+33.73 TO STA 560+68.22
STA 585+73.41 TO STA 586+17.17
STA 586+79.40 TO STA 587+23.19

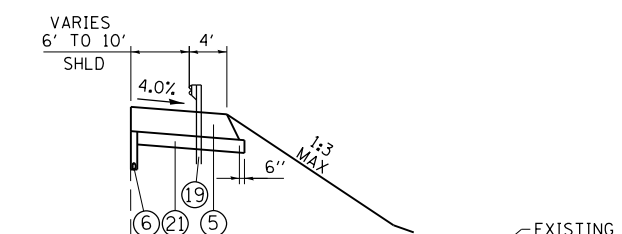


INSIDE SHOULDER

- STA 480+37.10 TO STA 520+15.43
- STA 520+15.43 TO STA 559+67.23
- STA 560+68.22 TO STA 585+73.41
- STA 587+23.19 TO STA 592+90.74
- STA 479+50.00 TO STA 517+63.26
- STA 521+17.36 TO STA 559+67.23
- STA 560+68.22 TO STA 585+73.41
- STA 587+23.19 TO STA 587+77.88

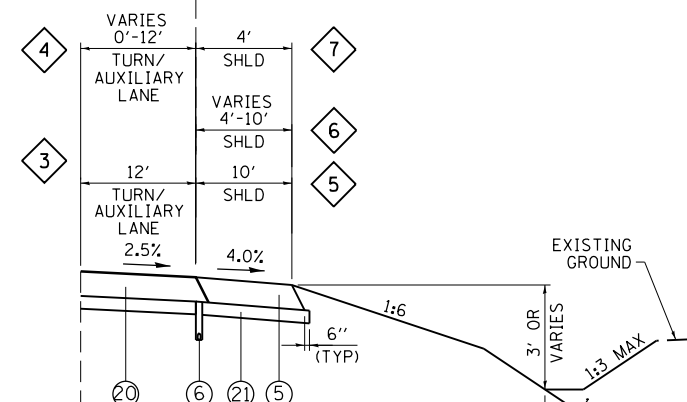


INSIDE GUARDRAIL SECTION



GUARDRAIL SECTION

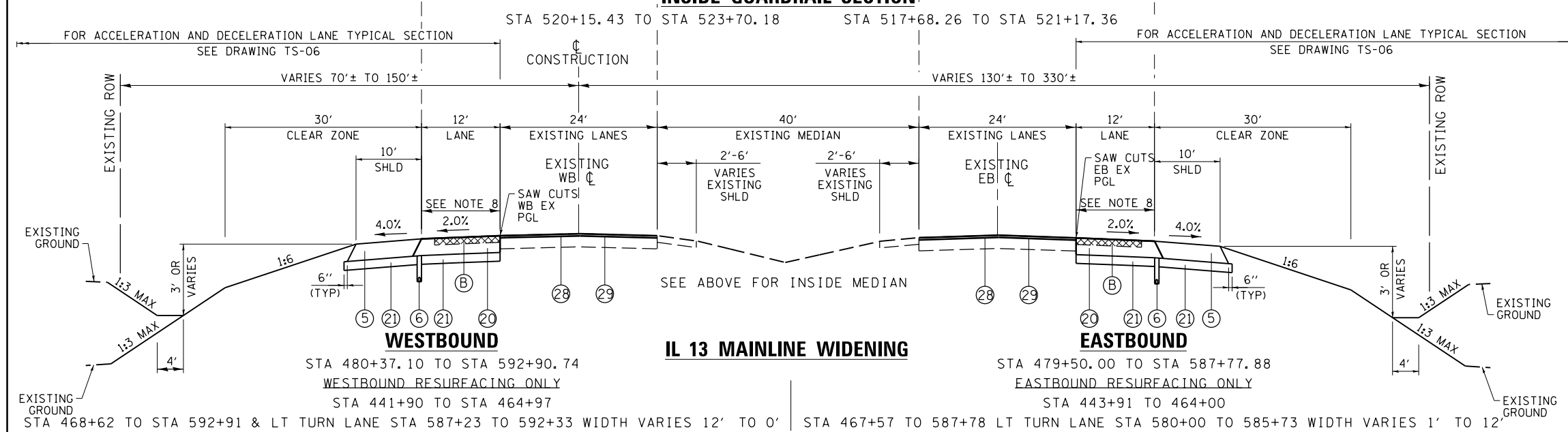
STA 501+60.68 TO STA 507+67.31



TURN / AUXILIARY LANE

- 3 STA 489+40.13 TO STA 492+30.25
STA 538+77.53 TO STA 559+44.78
STA 582+93.19 TO STA 585+78.19
- 4 STA 486+55.13 TO STA 489+40.13
STA 580+08.19 TO STA 582+93.19

LEGEND	
(A)	EXISTING HMA PAVEMENT
(B)	PAVED SHOULDER REMOVAL
(1)	HOT-MIX ASPHALT SURFACE COURSE, MIX C, N90, 1 1/2"
(2)	HOT-MIX ASPHALT BINDER COURSE, IL-19.0, N90, 2 1/2"
(3)	HOT-MIX ASPHALT SHOULDERS, 4"
(4)	AGGREGATE BASE COURSE, TYPE A 8"
(5)	HOT-MIX ASPHALT SHOULDERS, 15 1/4"
(6)	PIPE UNDERDRAINS, 4"
(7)	PROCESSING LIME STABILIZED SOIL MIXTURE 12"
(8)	COMBINATION CONCRETE CURB AND GUTTER, TYPE B-6.24
(9)	PORTLAND CEMENT CONCRETE SIDEWALK 6 INCH
(10)	SUBBASE GRANULAR MATERIAL, TYPE C
(11)	AGGREGATE SHOULDERS, TYPE A 8"
(12)	HOT-MIX ASPHALT SURFACE COURSE, MIX D, N90, 2 1/2"
(13)	PORTLAND CEMENT CONCRETE SIDEWALK 4 INCH
(14)	CONCRETE GUTTER, TYPE A
(15)	HOT-MIX ASPHALT SHOULDERS, 8"
(16)	CONCRETE MEDIAN SURFACE, 4 INCH
(17)	PAVED DITCH, TYPE A-15
(18)	NOT USED
(19)	STEEL PLATE BEAM GUARDRAIL, TYPE A, 6 FOOT POSTS
(20)	HOT-MIX ASPHALT PAVEMENT (FULL DEPTH), 15 1/4" (SEE NOTE 8)
(21)	SUBBASE GRANULAR MATERIAL, TYPE A 8"
(22)	HOT-MIX ASPHALT PAVEMENT (FULL DEPTH), 10 3/4"
(23)	AGGREGATE SHOULDERS, TYPE B
(24)	CONCRETE MEDIAN, TYPE SB-6.24
(25)	SUBBASE GRANULAR MATERIAL, TYPE A 12"
(26)	COMBINATION CONCRETE CURB AND GUTTER, TYPE M-6.24
(27)	CONCRETE MEDIAN, TYPE SB-6.06
(28)	HOT-MIX ASPHALT REMOVAL, 2"
(29)	HOT-MIX ASPHALT SURFACE COURSE, MIX E, N90, 2"



IL 13 MAINLINE WIDENING

FOR ACCELERATION AND DECELERATION LANE TYPICAL SECTION SEE DRAWING TS-06

CONSTRUCTION

VARIES 70'± TO 150'±

VARIES 130'± TO 330'±

FOR ACCELERATION AND DECELERATION LANE TYPICAL SECTION SEE DRAWING TS-06

WESTBOUND
STA 480+37.10 TO STA 592+90.74
WESTBOUND RESURFACING ONLY
STA 441+90 TO STA 464+97

EASTBOUND
STA 479+50.00 TO STA 587+77.88
EASTBOUND RESURFACING ONLY
STA 443+91 TO 464+00

STA 468+62 TO STA 592+91 & LT TURN LANE STA 587+23 TO 592+33 WIDTH VARIES 12' TO 0'

STA 467+57 TO 587+78 LT TURN LANE STA 580+00 TO 585+73 WIDTH VARIES 1' TO 12'

- NOTES:**
- EASTBOUND LANE STATION RANGES TAKEN FROM EXISTING WESTBOUND ALIGNMENT.
 - WHERE OUTSIDE AND MEDIAN WIDENING OCCURS, EXISTING PAVEMENT AND SHOULDER SHALL BE REMOVED.
 - FOR SPECIAL DITCH PROFILES, SEE ROADWAY, DRAINAGE AND UTILITY PLANS.
 - THE COARSE AGGREGATE FILL (CA16) TO SUB-GRADE NOTED IN STANDARD 606301-04 SHALL BE COMPLETED IN ACCORDANCE WITH SECTION 606.09 INCLUDED IN THE COST PER SQ. FT. FOR CONCRETE MEDIAN SURFACE, 4 INCH.
 - FOR FURTHER DETAILS, SEE INTERSECTION DETAIL SHEETS.
 - FOR SHOULDER WIDENING AT GUARDRAIL DETAILS, SEE HIGHWAY STANDARD 630301.
 - FOR LOCATIONS OF EXISTING TURN LANES, SEE DRAWING NO. TS-01 AND TS-02.
 - THE FULL DEPTH PAVEMENT LAYERS SHALL BE 2" POLYMER SURFACE, 2 1/4" POLYMER BINDER AND THE REMAINING STRUCTURE BEING BINDER.