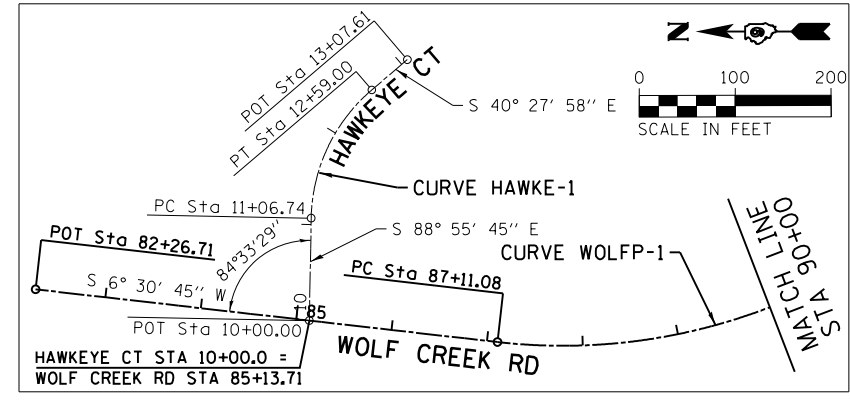


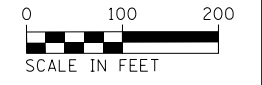
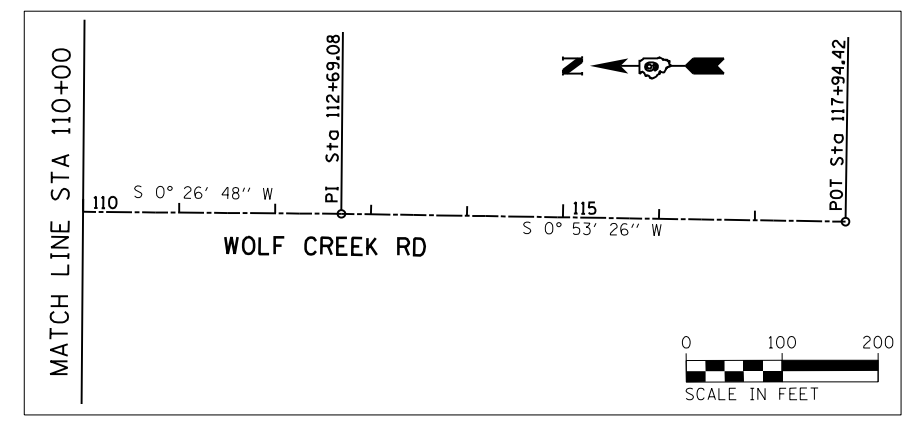


MATCH LINE STA 66+00

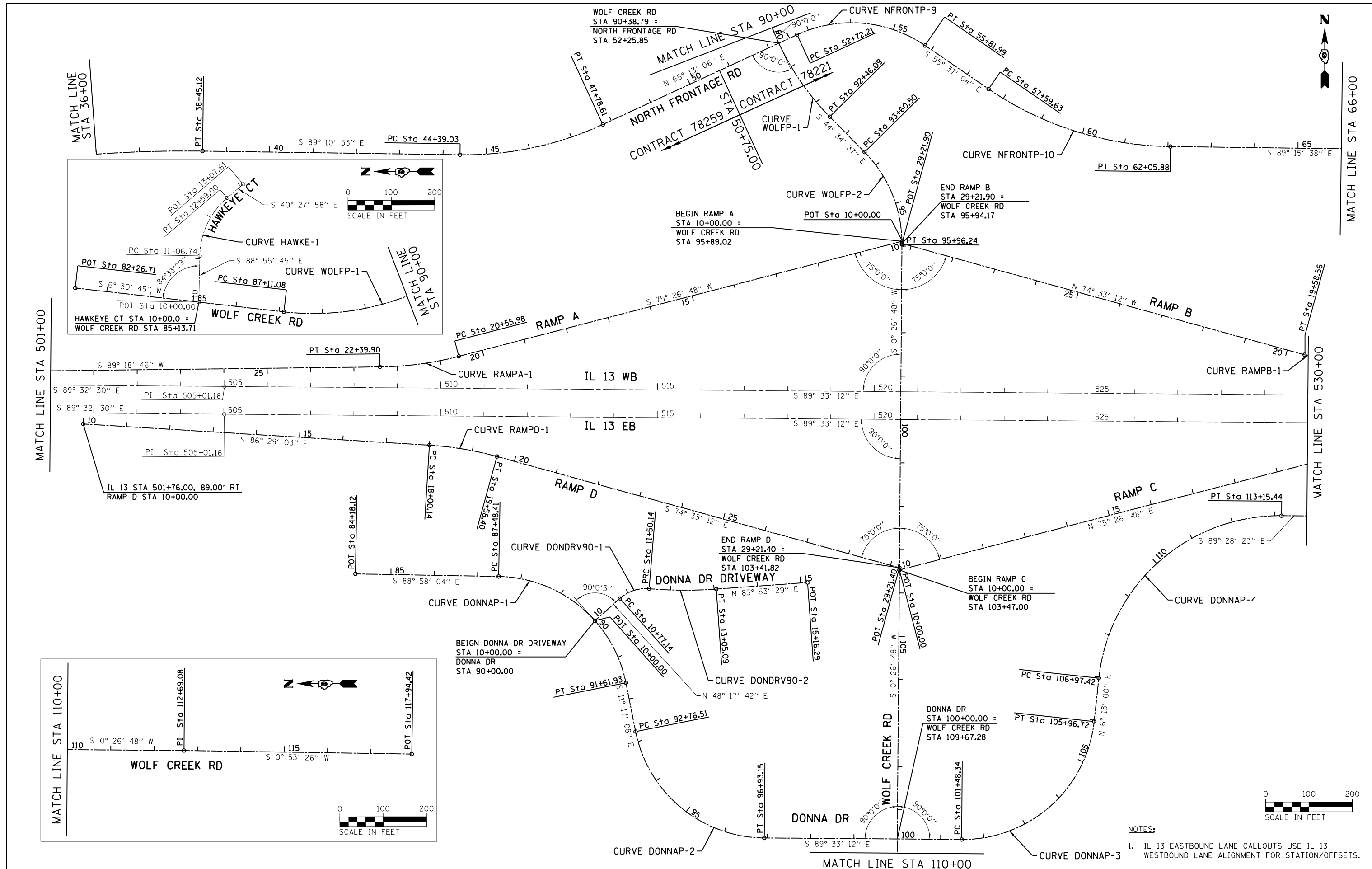


MATCH LINE STA 501+00

MATCH LINE STA 530+00



NOTES:  
 1. IL 13 EASTBOUND LANE CALLOUTS USE IL 13 WESTBOUND LANE ALIGNMENT FOR STATION/OFFSETS.



FILE NAME =	USER NAME = sUSER*	DESIGNED - KN	REVISED -
c:\pwork\pwork\lavenderba\d0363618\078221-sht-ATB-02.dgn		DRAWN - AS	REVISED -
		CHECKED -	REVISED -
		DATE -	REVISED -

**STATE OF ILLINOIS  
DEPARTMENT OF TRANSPORTATION**

<b>ALIGNMENT, TIES AND BENCHMARKS</b>			
SCALE:	SHEET NO. 2 OF 16 SHEETS	STA. 501+00.00	TO STA. 530+00.00

F.A.P. RTE.	SECTION	COUNTY	TOTAL SHEETS	SHEET NO.
331	(1-3)R-2, N-4, TS-4, HBK-1	WILLIAMSON	733	100
DRAWING NO.	ATB-02	CONTRACT NO.	78221	
ILLINOIS FED. AID PROJECT				