

- NOTES:
- FOR ADDITIONAL REMOVAL ITEMS, SEE PAVEMENT MARKING AND SIGNING DRAWINGS AND SCHEDULE DRAWINGS.
  - EASTBOUND LANE CALLOUTS USE WESTBOUND LANE ALIGNMENT FOR STATION/OFFSET.
  - FOR CORNER ISLAND DETAILS, SEE INTERSECTION DETAILS.
  - FOR CLARITY, ONLY VARIABLE DEPTH DITCHES ARE SHOWN ON THE PROFILE. REAR RENEWAL TYPICAL SECTIONS AND CROSS SECTIONS FOR DEPENDENT DITCH INFORMATION.

BENCHMARK		
BENCHMARK	ELEVATION	DESCRIPTION
BM13	462.77	CUT SQUARE ON THE TOP OF THE SOUTH HEADWALL OF AN ACROSS ROAD CULVERT, 107.79' RIGHT OF THE CL OF RTE 13 WBL @ STA. 547+28.49

DATE	BY

PLAN	REGISTERED	PLOTTED	CHECKED	DATE

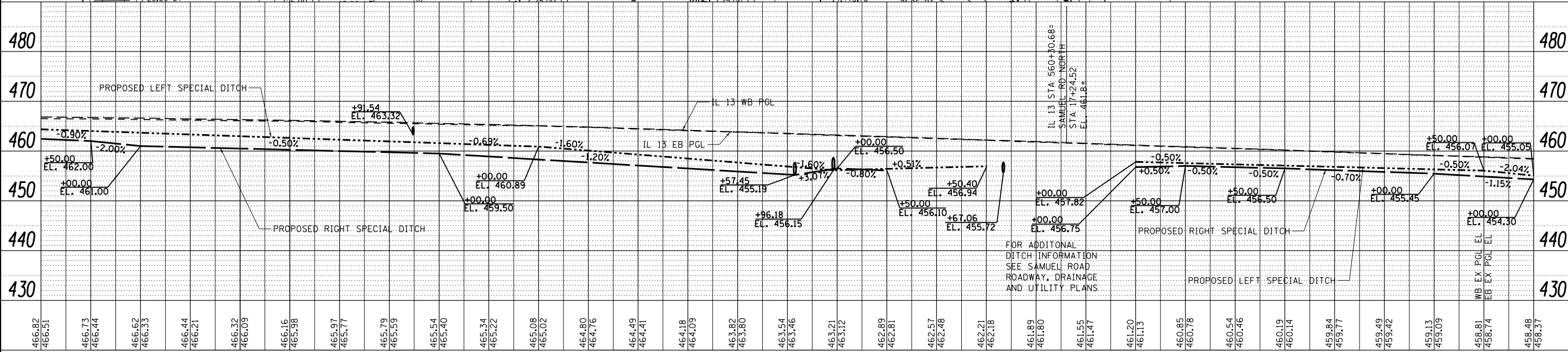
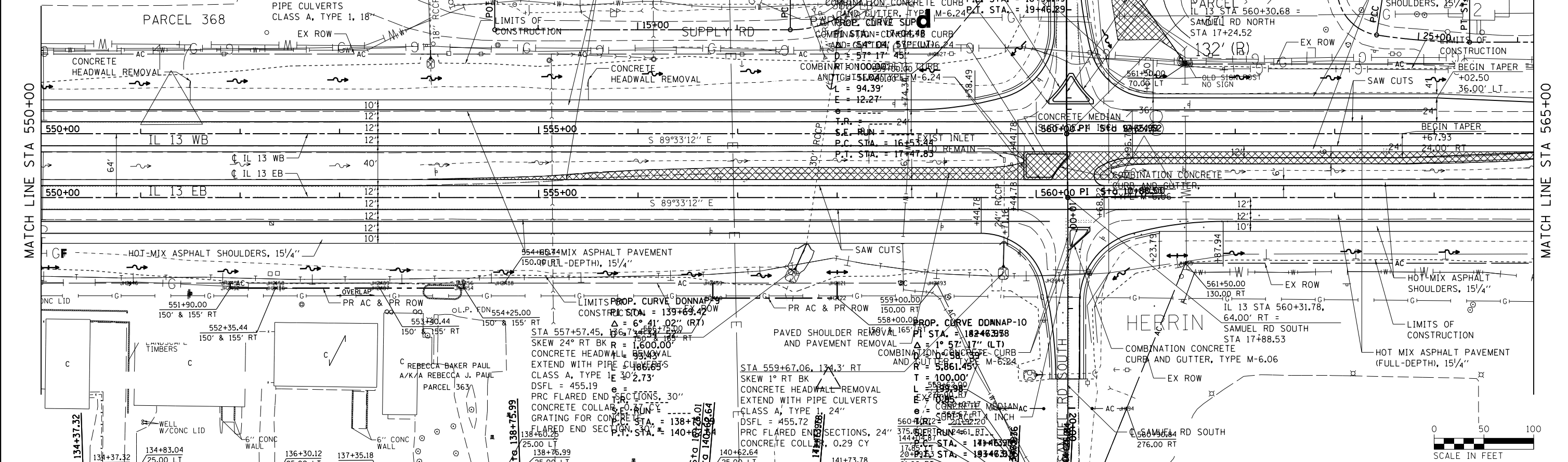
DATE	BY

PROFILE	REGISTERED	PLOTTED	CHECKED	DATE

MATCH LINE STA 550+00

MATCH LINE STA 565+00



FILE NAME =	USER NAME =	DESIGNED -	REVISOR -	STATE OF ILLINOIS	ROADWAY, DRAINAGE AND UTILITY PLAN AND PROFILE	F.A.P. RTE.	SECTION	COUNTY	TOTAL SHEETS	SHEET NO.
c:\pwork\pwidot\lavenderba\d0363618\0978221-sht-plnprf-06.dgn	#USER5*	KN	AS	DEPARTMENT OF TRANSPORTATION	IL 13	331	(1-3R-2, N-4, T5-4, HBK-1)	WILLIAMSON	733	130
PLOT SCALE = 1/31/2014		CHECKED -	REVISOR -			DRAWING NO.	PL-06			CONTRACT NO. 78221
		DATE -	REVISOR -			SCALE:				ILLINOIS FED. AID PROJECT