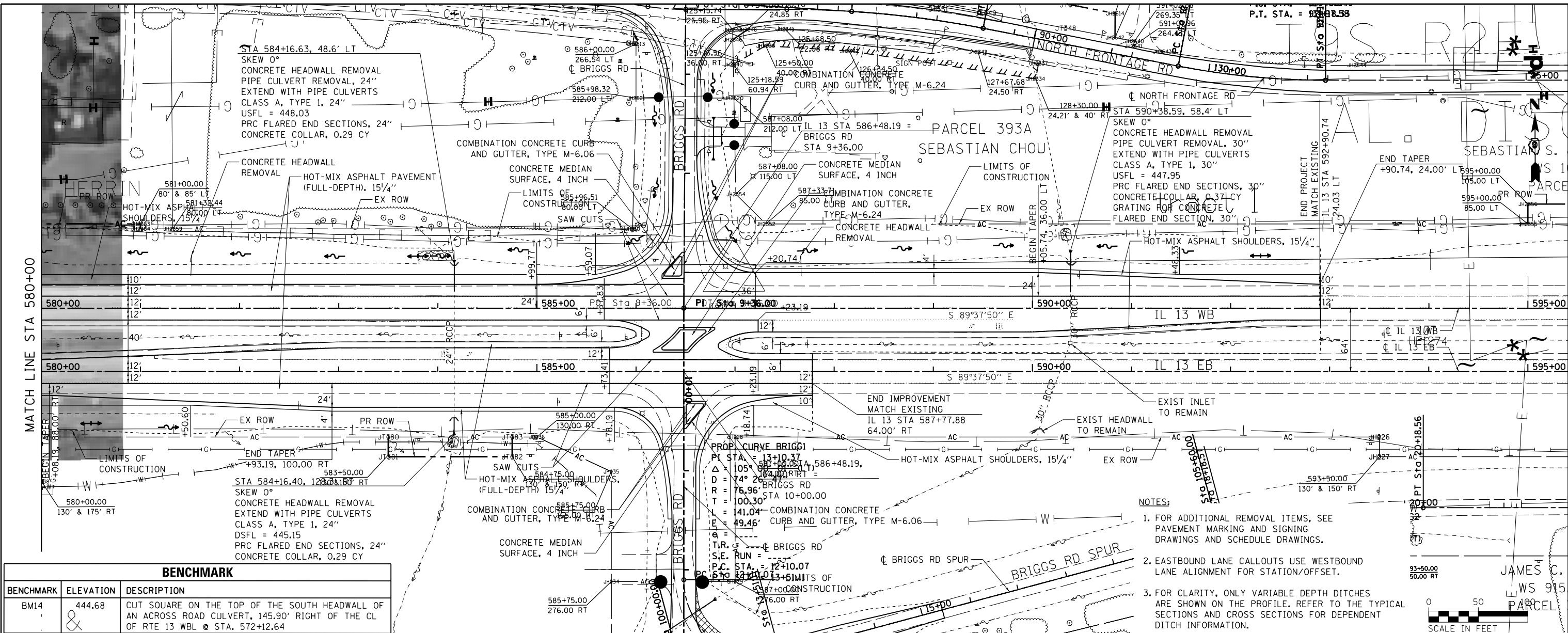
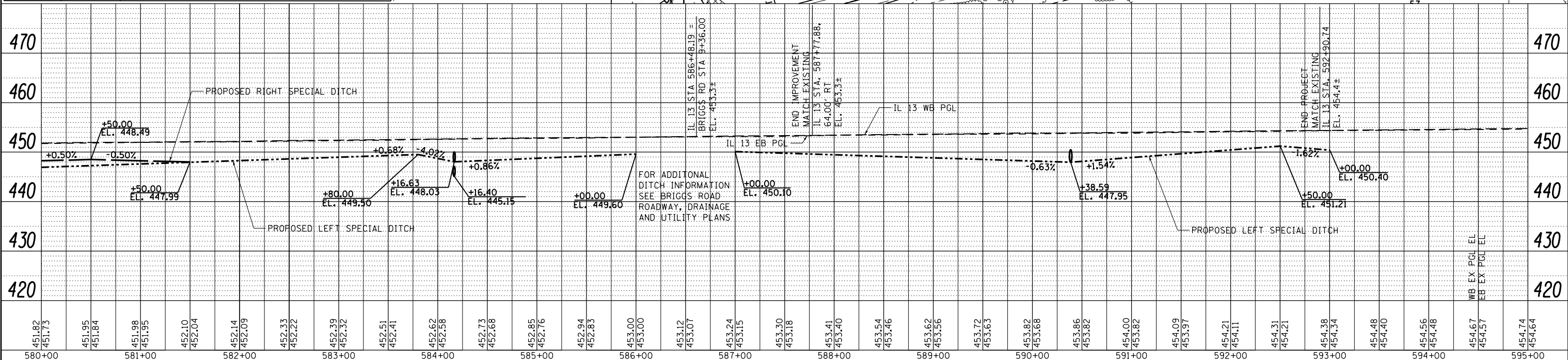


DATE	
BY	
PLAN	SURVEYED
	NOTE BOOK
	NO.
	ALIGNED
	CHECKED
	FILE NAME
	NO.

DATE	
BY	
PROFILE	SURVEYED
	GRADES CHECKED
	STRUCTURE NOTATIONS CHECKED
	NO.
	ALIGNED
	CHECKED
	FILE NAME
	NO.



BENCHMARK		
BENCHMARK	ELEVATION	DESCRIPTION
BM14	444.68	CUT SQUARE ON THE TOP OF THE SOUTH HEADWALL OF AN ACROSS ROAD CULVERT, 145.90' RIGHT OF THE CL OF RTE 13 WBL @ STA. 572+12.64



FILE NAME =	USER NAME = \$USER\$	DESIGNED - KN	REVISED -
ci:\pwork\p\dot\lavender\bd0363618\0978221-sht-plnprf-08.dgn		DRAWN - AS	REVISED -
PLOT SCALE = 100.0000' / in.		CHECKED -	REVISED -
PLOT DATE = 1/31/2014		DATE -	REVISED -

STATE OF ILLINOIS  
DEPARTMENT OF TRANSPORTATION

ROADWAY, DRAINAGE AND UTILITY PLAN AND PROFILE  
IL 13

SCALE: SHEET NO. 8 OF 69 SHEETS STA. 580+00.00 TO STA. 592+90.00

F.A.P. RTE.	SECTION	COUNTY	TOTAL SHEETS	SHEET NO.
331	(1-3)R-2, N-4, TS-4, HBK-1	WILLIAMSON	733	132
DRAWING NO. PL-08		CONTRACT NO. 78221		
ILLINOIS FED. AID PROJECT				