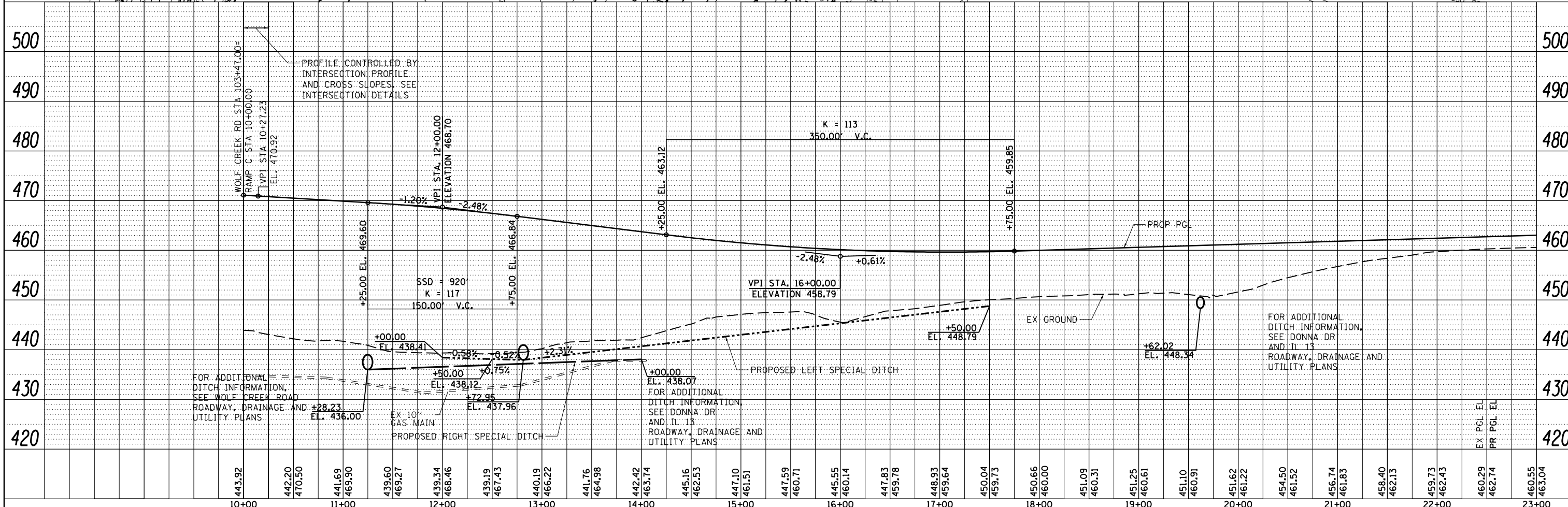
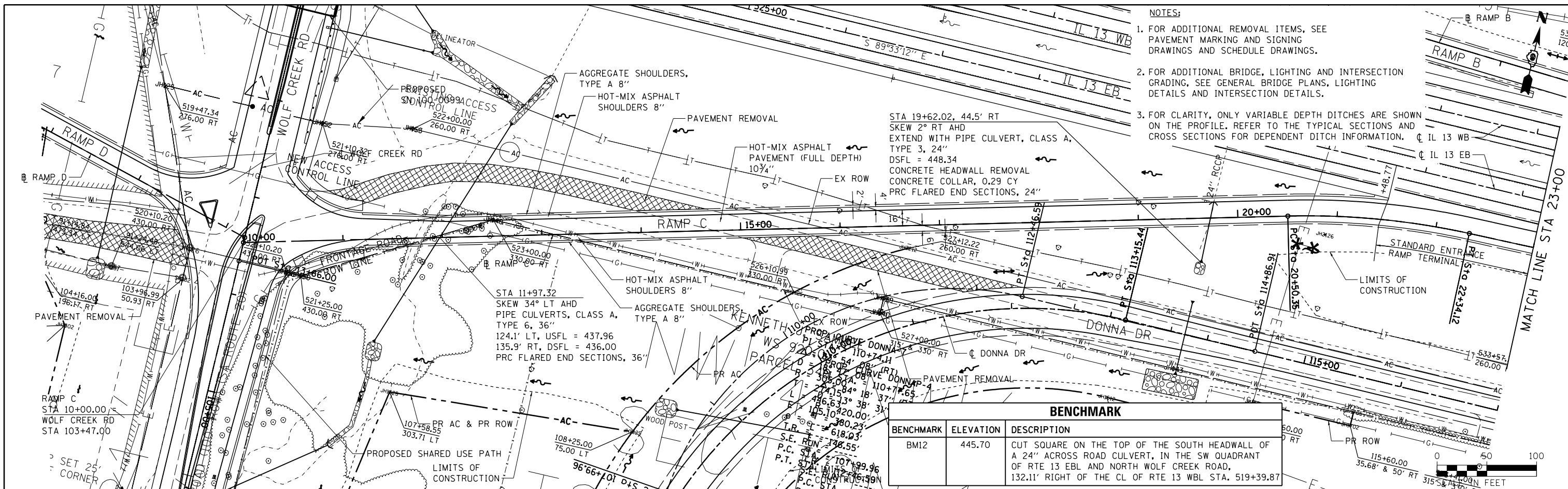


PLAN	SURVEYED	DATE
	PLOTTED	BY
	CHECKED	
	FILE NAME	
	NO.	

PROFILE	SURVEYED	DATE
	PLOTTED	BY
	CHECKED	
	NOTATIONS	
	NO.	



FILE NAME =	USER NAME =	DESIGNED -	REVISED -	STATE OF ILLINOIS DEPARTMENT OF TRANSPORTATION	ROADWAY, DRAINAGE AND UTILITY PLAN AND PROFILE RAMP C	SECTION 331 (1-3JR-2, N-4, TS-4, HBK-1)	COUNTY WILLIAMSON	TOTAL SHEETS 733	SHEET NO. 137
c:\pwwork\pwwork\lavenderba\d8363618\0978221-sht-plnprf-13.dgn	KN	AS	REVISED -						
PLOT SCALE = 100.0000' / 1"	CHECKED -	REVISED -	REVISED -						
PLOT DATE = 1/31/2014	DATE -	REVISED -	REVISED -						
SCALE:						SHEET NO. 13 OF 69 SHEETS		STA. 10+00.00 TO STA. 23+00.00	
						DRAWING NO. PL-13		CONTRACT NO. 78221	
						ILLINOIS FED. AID PROJECT			

- NOTES:
- FOR ADDITIONAL REMOVAL ITEMS, SEE PAVEMENT MARKING AND SIGNING DRAWINGS AND SCHEDULE DRAWINGS.
 - FOR ADDITIONAL BRIDGE, LIGHTING AND INTERSECTION GRADING, SEE GENERAL BRIDGE PLANS, LIGHTING DETAILS AND INTERSECTION DETAILS.
 - FOR CLARITY, ONLY VARIABLE DEPTH DITCHES ARE SHOWN ON THE PROFILE, REFER TO THE TYPICAL SECTIONS AND CROSS SECTIONS FOR DEPENDENT DITCH INFORMATION.