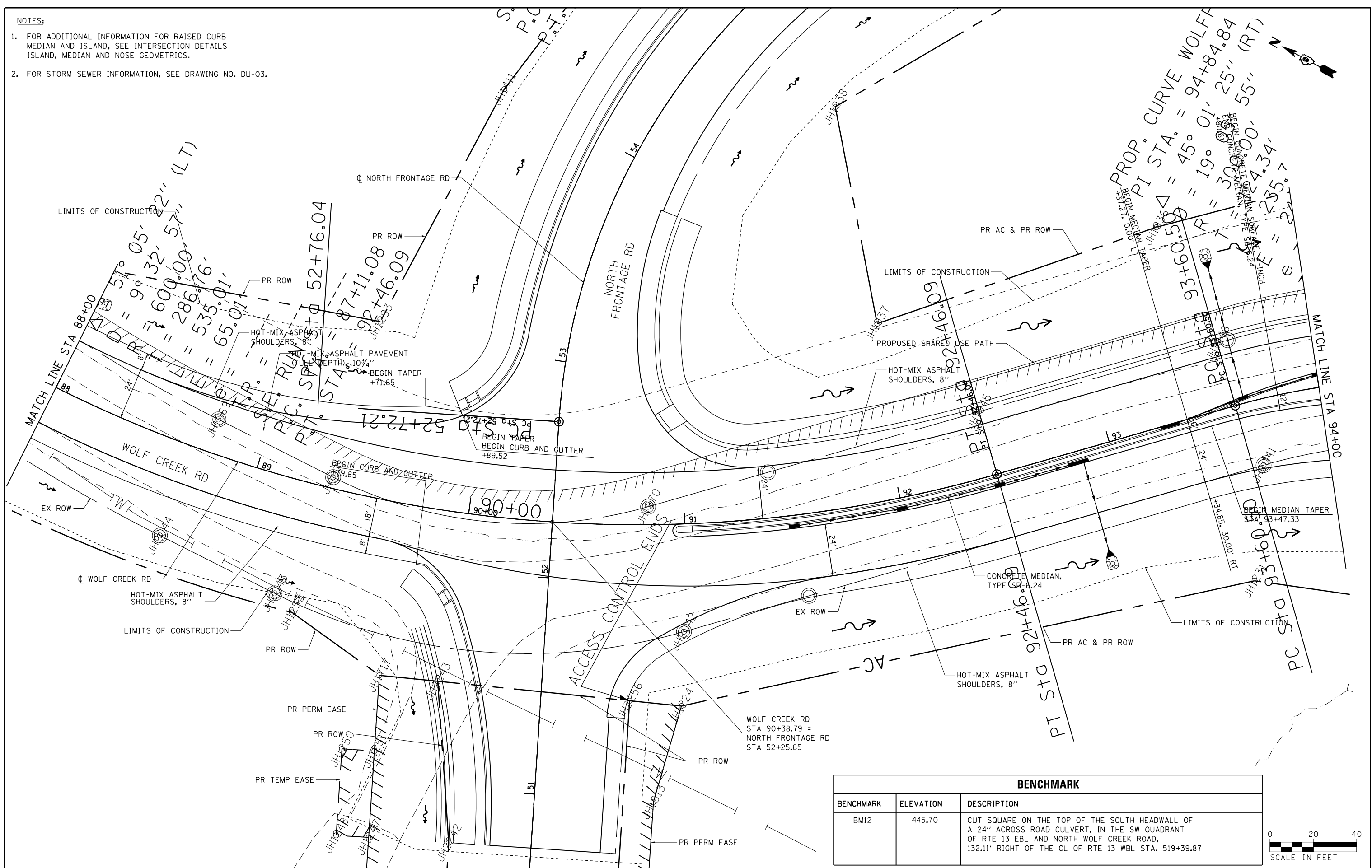


**NOTES:**

- FOR ADDITIONAL INFORMATION FOR RAISED CURB MEDIAN AND ISLAND, SEE INTERSECTION DETAILS ISLAND, MEDIAN AND NOSE GEOMETRICS.
- FOR STORM SEWER INFORMATION, SEE DRAWING NO. DU-03.



BENCHMARK		
BENCHMARK	ELEVATION	DESCRIPTION
BM12	445.70	CUT SQUARE ON THE TOP OF THE SOUTH HEADWALL OF A 24" ACROSS ROAD CULVERT, IN THE SW QUADRANT OF RTE 13 EBL AND NORTH WOLF CREEK ROAD, 132.11' RIGHT OF THE CL OF RTE 13 WBL STA. 519+39.87



FILE NAME =	USER NAME = #USER#	DESIGNED - KN	REVISED -
ct:\pw\work\p\ridot\lavenderba\d0363618\78221-sh1-plnprf-19.dgn		DRAWN - AS	REVISED -
	PLOT SCALE = 48.0000" / 1"	CHECKED -	REVISED -
	PLOT DATE = 1/31/2014	DATE -	REVISED -

STATE OF ILLINOIS  
DEPARTMENT OF TRANSPORTATION

ROADWAY, DRAINAGE AND UTILITY PLAN  
WOLF CREEK ROAD

SCALE: SHEET NO. 19 OF 69 SHEETS STA. 88+00.00 TO STA. 94+00.00

F.A.P. RTE.	SECTION	COUNTY	TOTAL SHEETS	SHEET NO.
331	(1-3)R-2, N-4, TS-4, HBK-1	WILLIAMSON	733	143
DRAWING NO. PL-19		CONTRACT NO. 78221		
ILLINOIS FED. AID PROJECT				