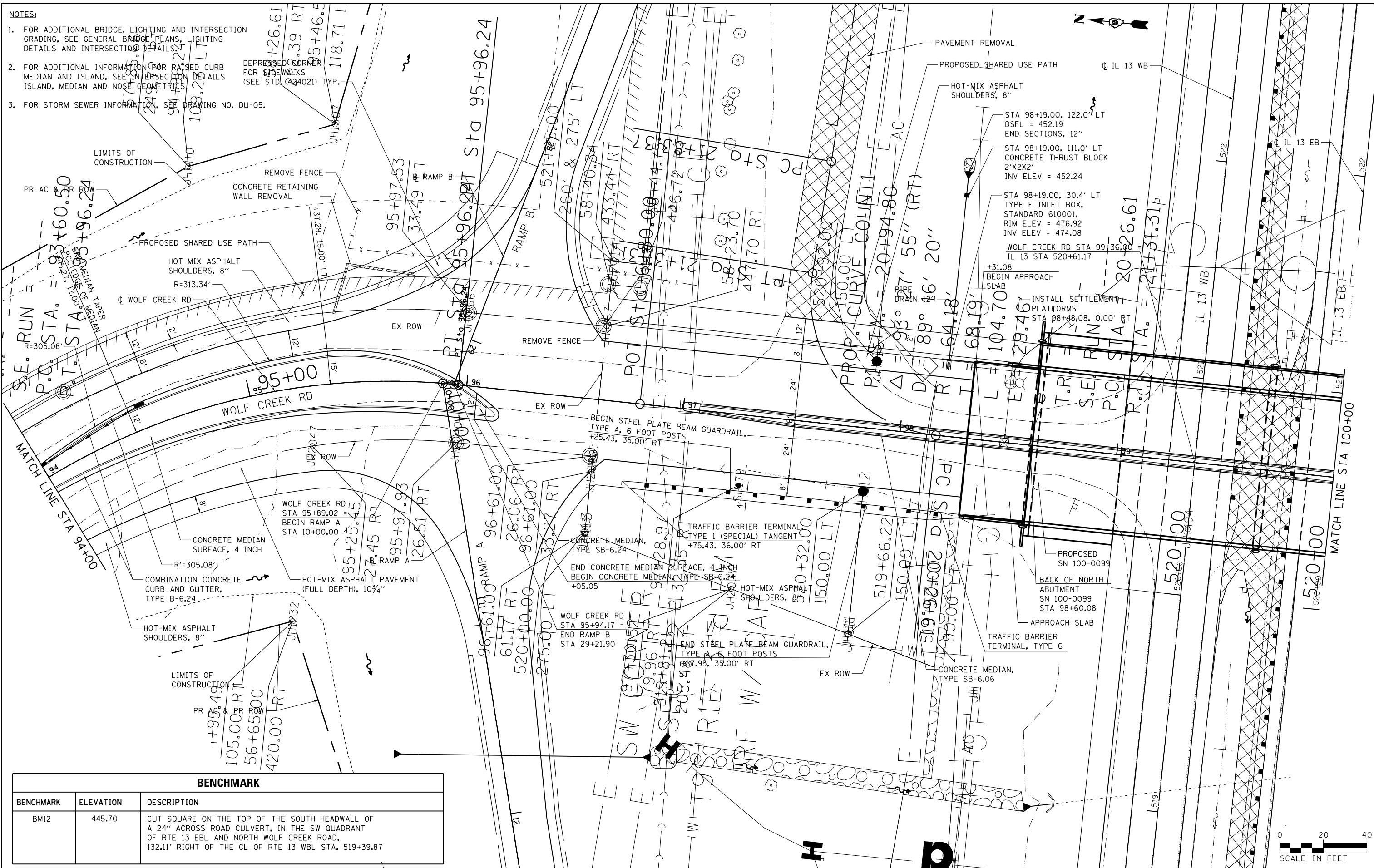


NOTES:

- FOR ADDITIONAL BRIDGE, LIGHTING AND INTERSECTION GRADING, SEE GENERAL BRIDGE PLANS, LIGHTING DETAILS AND INTERSECTION DETAILS.
- FOR ADDITIONAL INFORMATION FOR RAISED CURB MEDIAN AND ISLAND, SEE INTERSECTION DETAILS ISLAND, MEDIAN AND NOSE GEOMETRICS.
- FOR STORM SEWER INFORMATION, SEE DRAWING NO. DU-05.

DEPRESSED CORNER FOR SIDEWALKS (SEE STD. 24021) TYP.



BENCHMARK

BENCHMARK	ELEVATION	DESCRIPTION
BM12	445.70	CUT SQUARE ON THE TOP OF THE SOUTH HEADWALL OF A 24" ACROSS ROAD CULVERT, IN THE SW QUADRANT OF RTE 13 EBL AND NORTH WOLF CREEK ROAD, 132.11' RIGHT OF THE CL OF RTE 13 WBL STA. 519+39.87



FILE NAME =	USER NAME = USER*	DESIGNED - KN	REVISED -
et:\pw\work\p\dot\l\avenderba\d0363618\078221-sht-plnpr-f-21.dgn		DRAWN - AS	REVISED -
	PLOT SCALE = 40.0000' / in.	CHECKED -	REVISED -
	PLOT DATE = 1/31/2014	DATE -	REVISED -

**STATE OF ILLINOIS
DEPARTMENT OF TRANSPORTATION**

**ROADWAY, DRAINAGE AND UTILITY PLAN
WOLF CREEK ROAD**

SCALE: SHEET NO. 21 OF 69 SHEETS STA. 94+00.00 TO STA. 100+00.00

F.A.P. RTE.	SECTION	COUNTY	TOTAL SHEETS	SHEET NO.
331	(1-3)R-2, N-4, TS-4, HBK-1	WILLIAMSON	733	145
DRAWING NO.	PL-21	CONTRACT NO.	78221	
ILLINOIS FED. AID PROJECT				