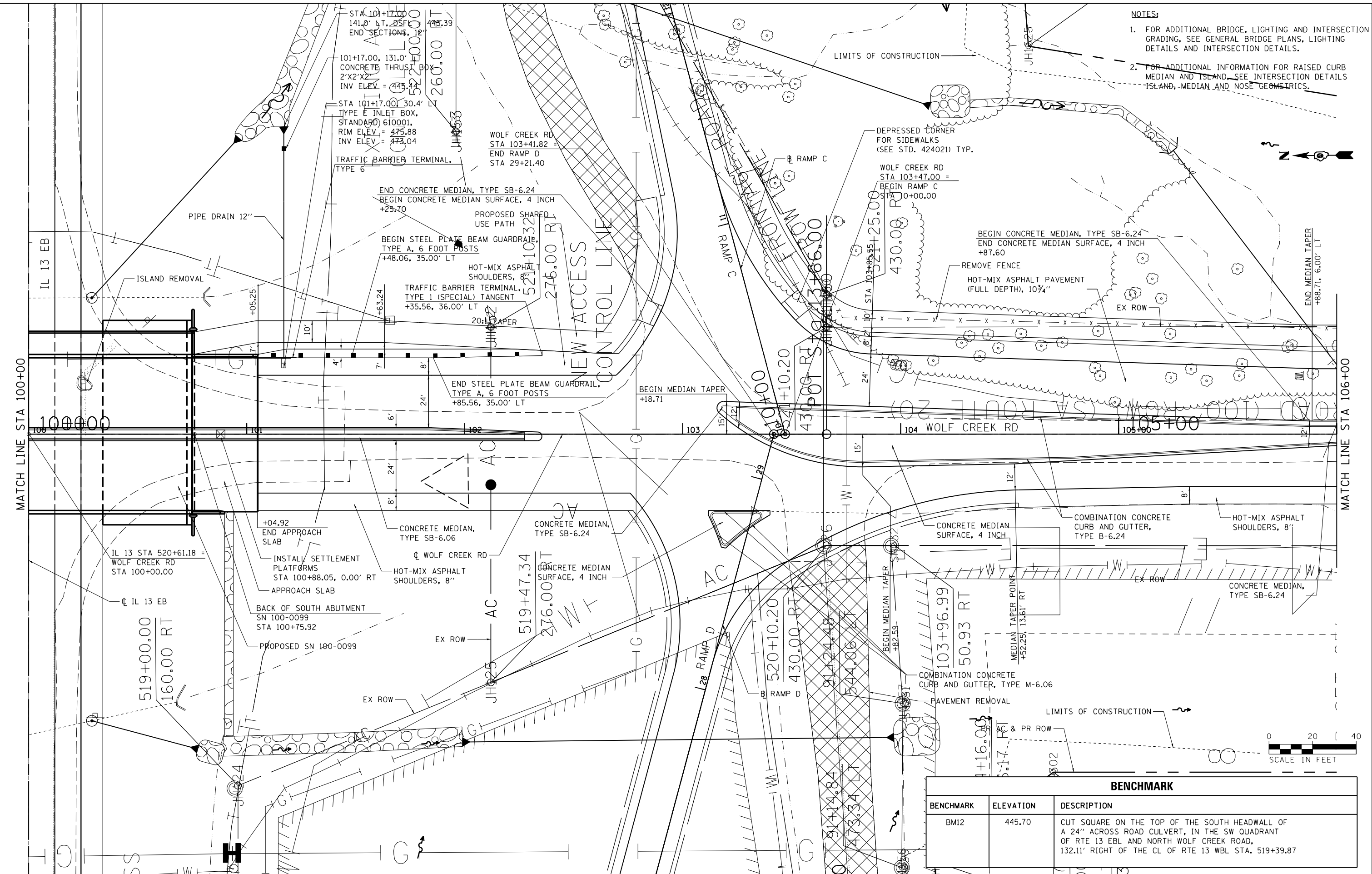


- NOTES:
- FOR ADDITIONAL BRIDGE, LIGHTING AND INTERSECTION GRADING, SEE GENERAL BRIDGE PLANS, LIGHTING DETAILS AND INTERSECTION DETAILS.
 - FOR ADDITIONAL INFORMATION FOR RAISED CURB MEDIAN AND ISLAND, SEE INTERSECTION DETAILS ISLAND, MEDIAN AND NOSE GEOMETRICS.



| BENCHMARK | | |
|-----------|-----------|--|
| BENCHMARK | ELEVATION | DESCRIPTION |
| BM12 | 445.70 | CUT SQUARE ON THE TOP OF THE SOUTH HEADWALL OF A 24" ACROSS ROAD CULVERT, IN THE SW QUADRANT OF RTE 13 EBL AND NORTH WOLF CREEK ROAD, 132.11' RIGHT OF THE CL OF RTE 13 WBL STA. 519+39.87 |

| | | | |
|--|---------------------|---------------|-----------|
| FILE NAME = | USER NAME = \$USERS | DESIGNED - KN | REVISED - |
| es:\pw\work\p\idot\lavenderba\d0363618\0978221-sht-plnprf-23.dgn | | DRAWN - AS | REVISED - |
| PLOT SCALE = 40.0000' / in. | | CHECKED - | REVISED - |
| PLOT DATE = 1/31/2014 | | DATE - | REVISED - |

**STATE OF ILLINOIS
DEPARTMENT OF TRANSPORTATION**

**ROADWAY, DRAINAGE AND UTILITY PLAN
WOLF CREEK ROAD**

SCALE: SHEET NO. 23 OF 69 SHEETS STA. 100+00.00 TO STA. 106+00.00

| | | | | |
|---------------------------|----------------------------|--------------------|--------------|-----------|
| F.A.P. RTE. | SECTION | COUNTY | TOTAL SHEETS | SHEET NO. |
| 331 | (1-3)R-2, N-4, TS-4, HBK-1 | WILLIAMSON | 733 | 147 |
| DRAWING NO. PL-23 | | CONTRACT NO. 78221 | | |
| ILLINOIS FED. AID PROJECT | | | | |