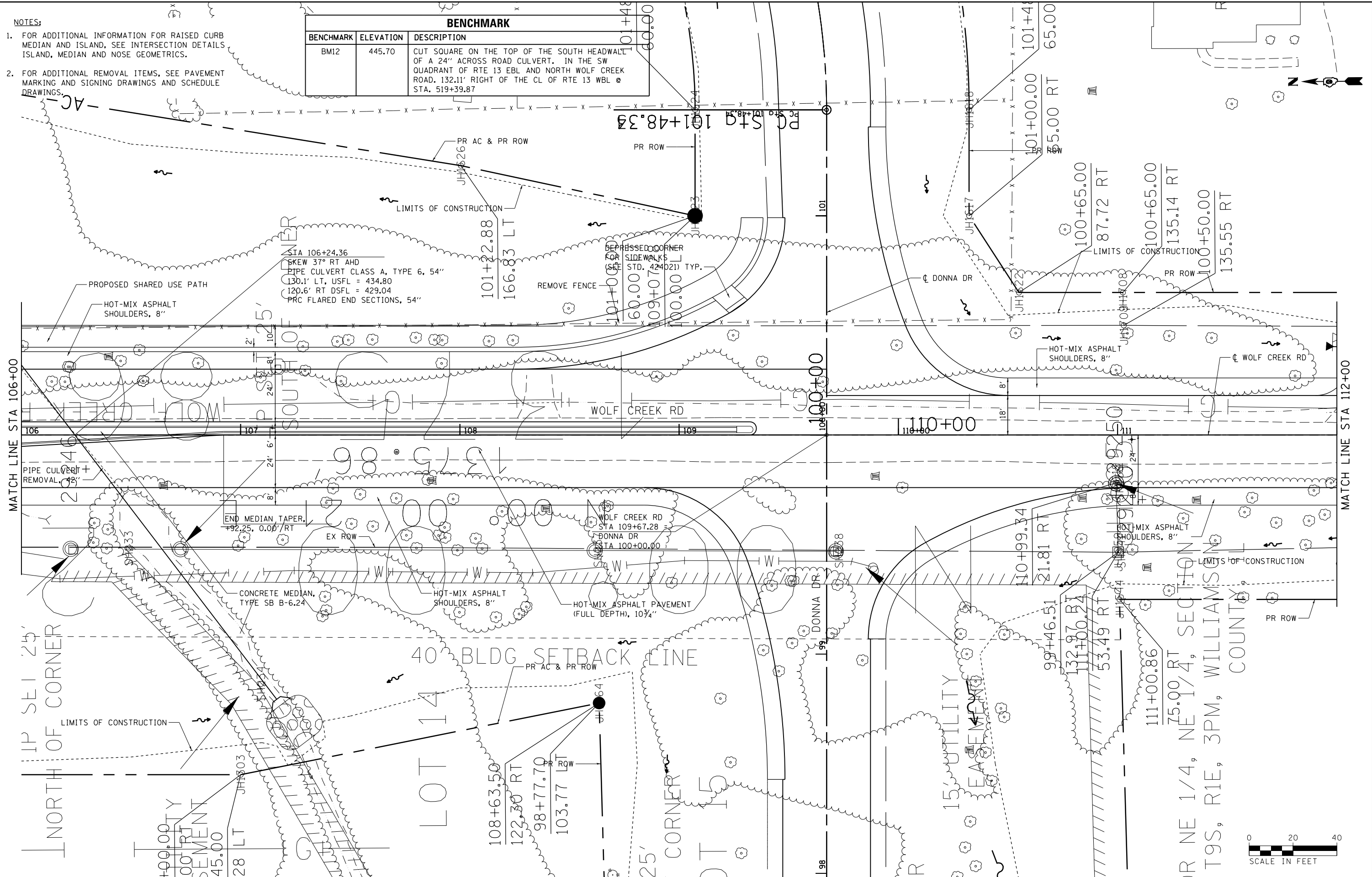


NOTES:

- FOR ADDITIONAL INFORMATION FOR RAISED CURB MEDIAN AND ISLAND, SEE INTERSECTION DETAILS ISLAND, MEDIAN AND NOSE GEOMETRICS.
- FOR ADDITIONAL REMOVAL ITEMS, SEE PAVEMENT MARKING AND SIGNING DRAWINGS AND SCHEDULE DRAWINGS.

BENCHMARK		
BENCHMARK	ELEVATION	DESCRIPTION
BM12	445.70	CUT SQUARE ON THE TOP OF THE SOUTH HEADWALL OF A 24" ACROSS ROAD CULVERT. IN THE SW QUADRANT OF RTE 13 EBL AND NORTH WOLF CREEK ROAD. 132.11' RIGHT OF THE CL OF RTE 13 WBL @ STA. 519+39.87



FILE NAME =	USER NAME = #USERS#	DESIGNED - KN	REVISED -
ei:\p\work\p\wdot\l\avenderba\d0363618\0978221-sht-plnprf-25.dgn		DRAWN - AS	REVISED -
	PLOT SCALE = 40.0000' / in.	CHECKED -	REVISED -
	PLOT DATE = 1/31/2014	DATE -	REVISED -

**STATE OF ILLINOIS
DEPARTMENT OF TRANSPORTATION**

**ROADWAY, DRAINAGE AND UTILITY PLAN
WOLF CREEK ROAD**

SCALE: SHEET NO. 25 OF 69 SHEETS STA. 106+00.00 TO STA. 112+00.00

F.A.P. RTE.	SECTION	COUNTY	TOTAL SHEETS	SHEET NO.
331	(1-3)R-2, N-4, TS-4, HBK-1	WILLIAMSON	733	149
DRAWING NO.	PL-25	CONTRACT NO.	78221	
ILLINOIS FED. AID PROJECT				

