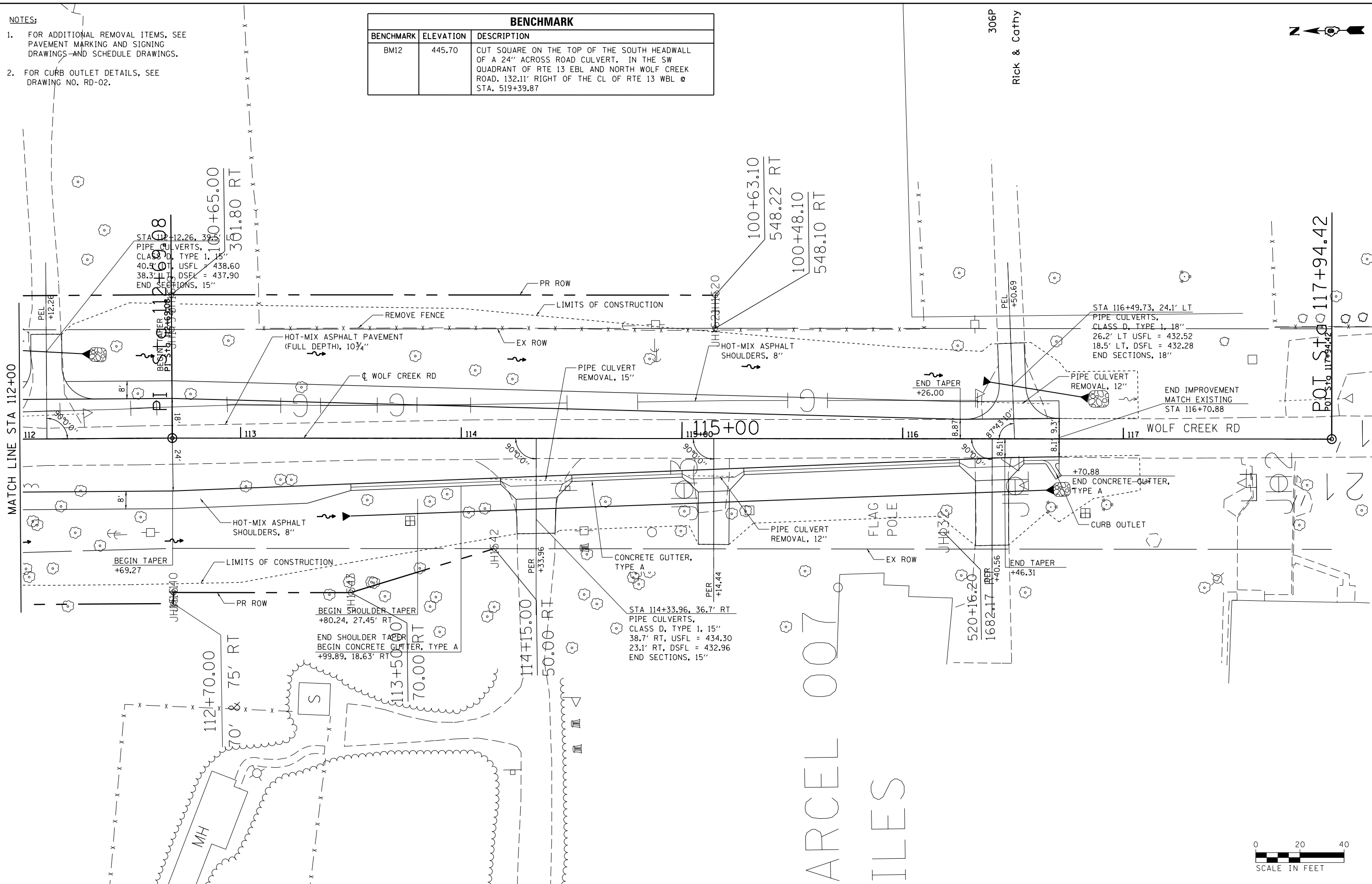


NOTES:

- FOR ADDITIONAL REMOVAL ITEMS, SEE PAVEMENT MARKING AND SIGNING DRAWINGS AND SCHEDULE DRAWINGS.
- FOR CURB OUTLET DETAILS, SEE DRAWING NO. RD-02.

BENCHMARK		
BENCHMARK	ELEVATION	DESCRIPTION
BM12	445.70	CUT SQUARE ON THE TOP OF THE SOUTH HEADWALL OF A 24" ACROSS ROAD CULVERT. IN THE SW QUADRANT OF RTE 13 EBL AND NORTH WOLF CREEK ROAD. 132.11' RIGHT OF THE CL OF RTE 13 WBL @ STA. 519+39.87



FILE NAME =	USER NAME = \$USER\$	DESIGNED - KN	REVISED -
et:\pw\work\p\dot\lavenderba\d0363618\078221-sht-plnprf-27.dgn		DRAWN - AS	REVISED -
PLOT SCALE = 40.0000' / in.		CHECKED -	REVISED -
PLOT DATE = 1/31/2014		DATE -	REVISED -

**STATE OF ILLINOIS
DEPARTMENT OF TRANSPORTATION**

**ROADWAY, DRAINAGE AND UTILITY PLAN
WOLF CREEK ROAD**

SCALE: SHEET NO. 27 OF 69 SHEETS STA. 112+00.00 TO STA. 116+70.88

F.A.P. RTE.	SECTION	COUNTY	TOTAL SHEETS	SHEET NO.
331	(1-3)R-2, N-4, TS-4, HBK-1	WILLIAMSON	733	151
DRAWING NO. PL-27		CONTRACT NO. 78221		
ILLINOIS FED. AID PROJECT				