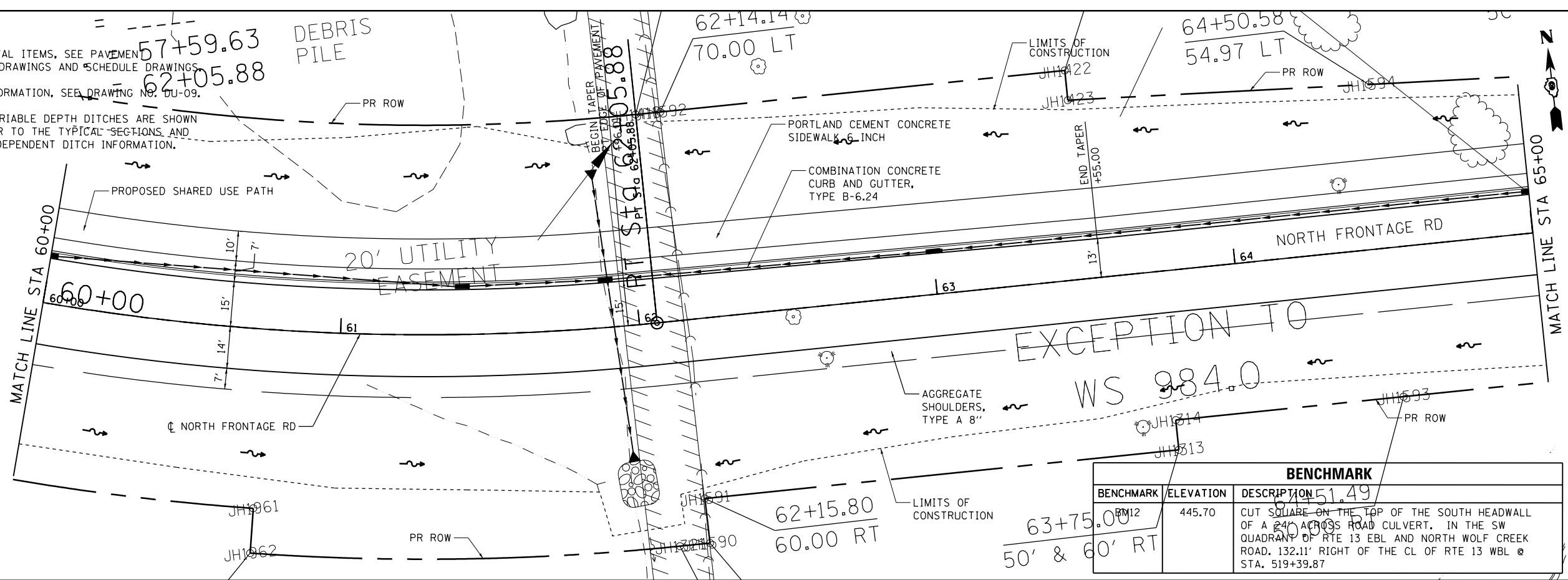


NOTES:

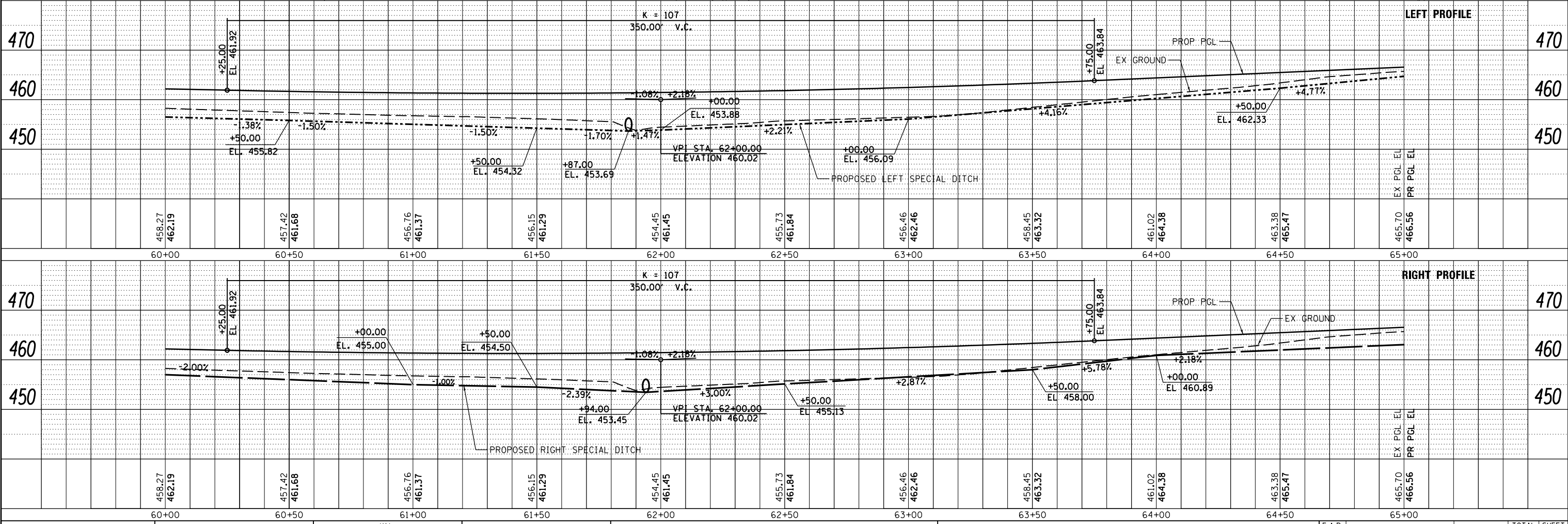
- FOR ADDITIONAL REMOVAL ITEMS, SEE PAVEMENT MARKING AND SIGNING DRAWINGS AND SCHEDULE DRAWINGS.
- FOR STORM SEWER INFORMATION, SEE DRAWING NO. DU-09.
- FOR CLARITY, ONLY VARIABLE DEPTH DITCHES ARE SHOWN ON THE PROFILE. REFER TO THE TYPICAL SECTIONS AND CROSS SECTIONS FOR DEPENDENT DITCH INFORMATION.

PLAN	SURVEYED	DATE
NOTE BOOK NO.	PLOTTED	BY
	ALIGNMENT CHECKED	
	GRADE CHECKED	
	STRUCTURE NOTATIONS CHECKED	
	CADD FILE NAME	

PROFILE	SURVEYED	DATE
NOTE BOOK NO.	PLOTTED	BY
	ALIGNMENT CHECKED	
	GRADE CHECKED	
	STRUCTURE NOTATIONS CHECKED	
	CADD FILE NAME	



BENCHMARK		
BENCHMARK	ELEVATION	DESCRIPTION
BM12	445.70	CUT SQUARE ON THE TOP OF THE SOUTH HEADWALL OF A 24" ACROSS ROAD CULVERT, IN THE SW QUADRANT OF RTE 13 EBL AND NORTH WOLF CREEK ROAD. 132.11' RIGHT OF THE CL OF RTE 13 WBL @ STA. 519+39.87



FILE NAME =	USER NAME = \$USER\$	DESIGNED - KN	REVISED -	STATE OF ILLINOIS DEPARTMENT OF TRANSPORTATION	ROADWAY, DRAINAGE AND UTILITY PLAN AND PROFILE NORTH FRONTAGE ROAD	F.A.P. RTE.	SECTION	COUNTY	TOTAL SHEETS	SHEET NO.
c:\pwork\pwork\lavenderba\d8363618\0978221-sht-plnprf-33.dgn	CHECKED - AS	REVISIED -	331			(1-3)R-2, N-4, TS-4, HBK-1	WILLIAMSON	733	157	
PLOT SCALE = 40.0000' / in.	DRAWN -	REVISIED -	DRAWING NO. PL-33			CONTRACT NO. 78221				
PLOT DATE = 1/31/2014	CHECKED -	REVISIED -	SCALE:			SHEET NO. 33 OF 69 SHEETS STA. 60+00.00 TO STA. 65+00.00				
ILLINOIS FED. AID PROJECT										