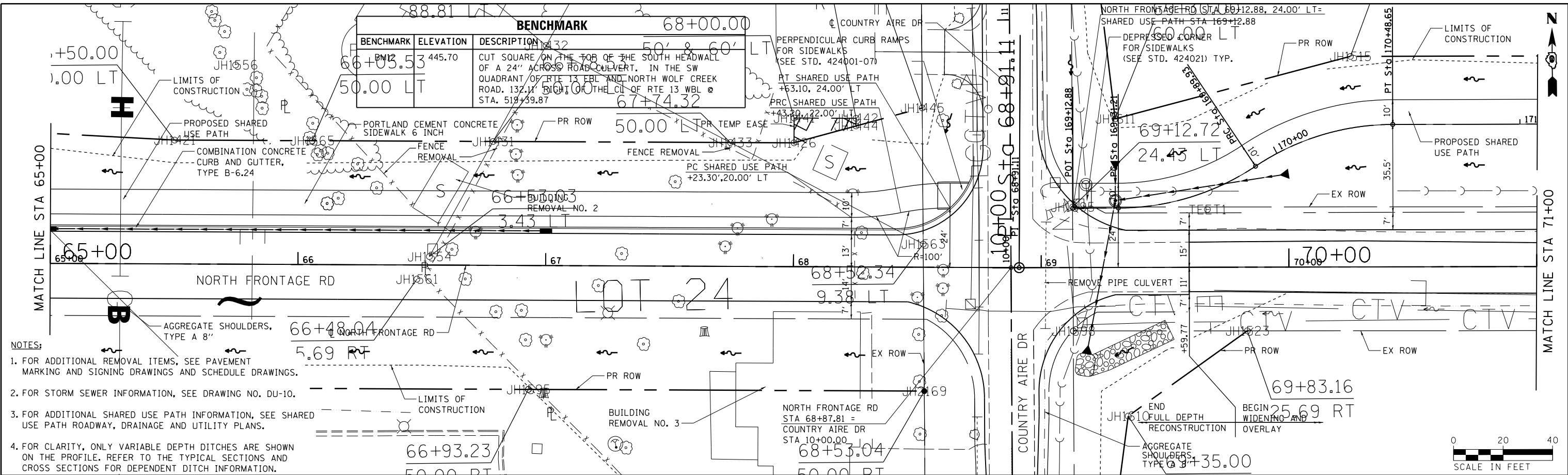
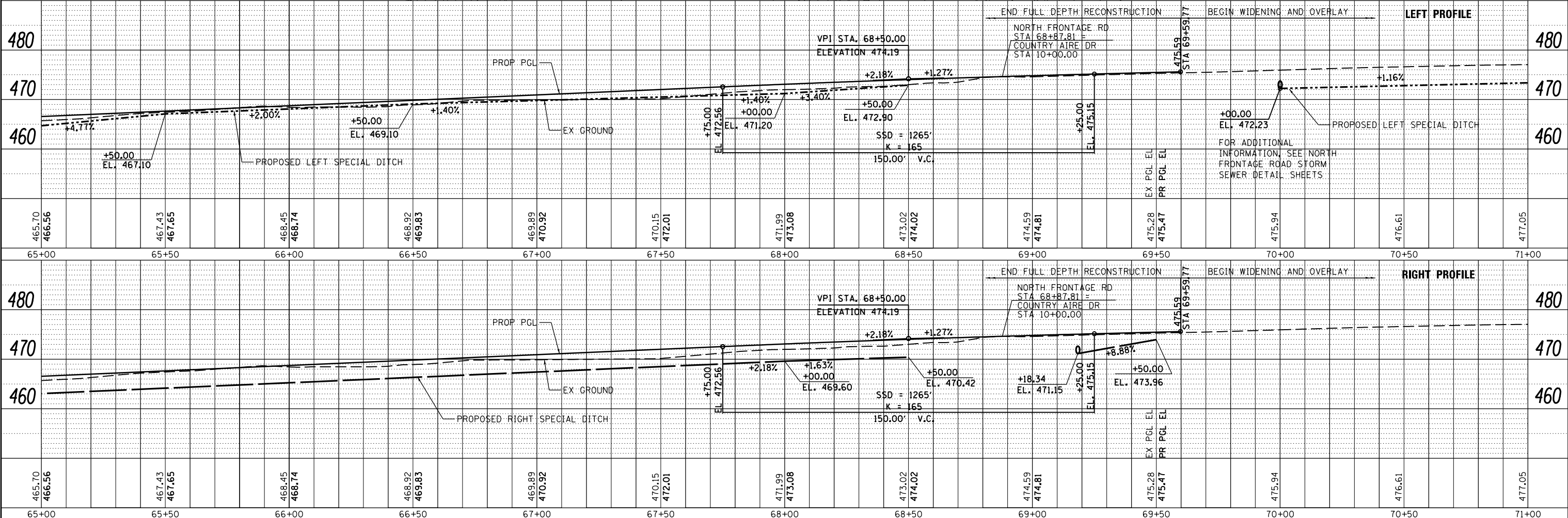


DATE	
BY	
PLAN	SURVEYED
	PLOTTED
	GRADES CHECKED
	STRUCTURE NOTATIONS CHECKED
	NOTE BOOK NO.
	FILE NAME

DATE	
BY	
PROFILE	SURVEYED
	PLOTTED
	GRADES CHECKED
	STRUCTURE NOTATIONS CHECKED
	NOTE BOOK NO.
	FILE NAME



- NOTES:**
- FOR ADDITIONAL REMOVAL ITEMS, SEE PAVEMENT MARKING AND SIGNING DRAWINGS AND SCHEDULE DRAWINGS.
  - FOR STORM SEWER INFORMATION, SEE DRAWING NO. DU-10.
  - FOR ADDITIONAL SHARED USE PATH INFORMATION, SEE SHARED USE PATH ROADWAY, DRAINAGE AND UTILITY PLANS.
  - FOR CLARITY, ONLY VARIABLE DEPTH DITCHES ARE SHOWN ON THE PROFILE. REFER TO THE TYPICAL SECTIONS AND CROSS SECTIONS FOR DEPENDENT DITCH INFORMATION.



FILE NAME =	USER NAME = \$USER\$	DESIGNED - KN	REVISED -	<b>STATE OF ILLINOIS DEPARTMENT OF TRANSPORTATION</b>	<b>ROADWAY, DRAINAGE AND UTILITY PLAN AND PROFILE NORTH FRONTAGE ROAD</b>	F.A.P. RTE.	SECTION	COUNTY	TOTAL SHEETS	SHEET NO.
c:\pwwork\pwwork\lavenderba\d8363618\0978221-sht-plnprf-34.dgn	CHECKED - AS	REVISED -	331			(1-3)R-2, N-4, TS-4, HBK-1	WILLIAMSON	733	158	
PLOT SCALE = 40.0000' / in.	DRAWN -	REVISED -	DRAWING NO. <b>PL-34</b> CONTRACT NO. 78221							
PLOT DATE = 1/31/2014	CHECKED -	REVISED -	ILLINOIS FED. AID PROJECT							