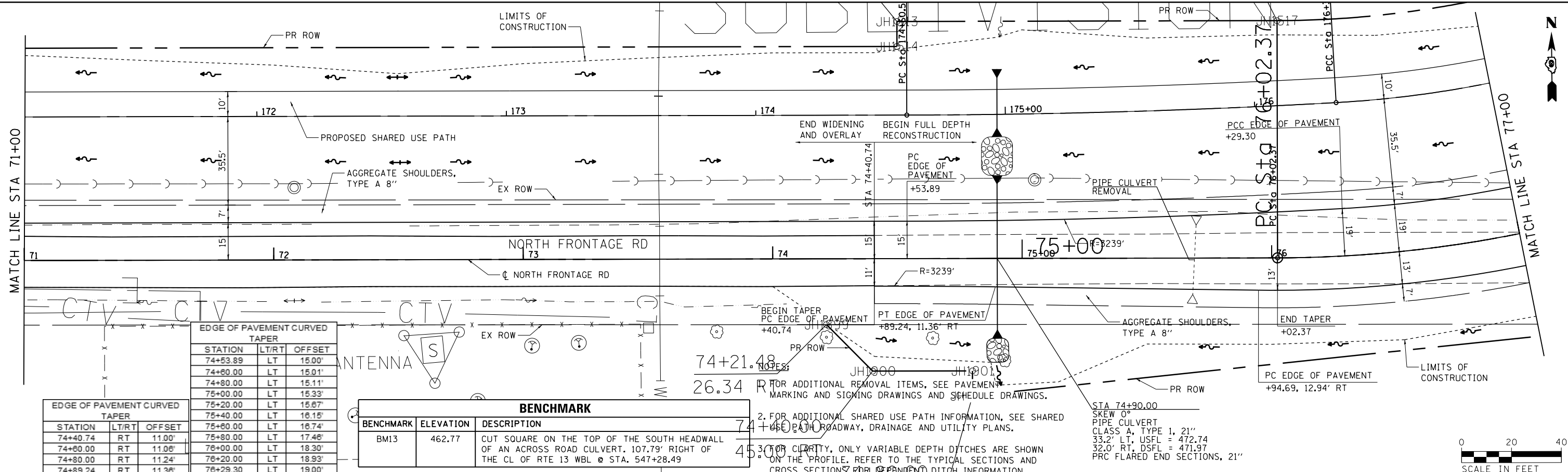


PLAN	SURVEYED	DATE
	PLOTTED	BY
	GRADES CHECKED	
	STRUCTURE NOTATIONS CHECKED	
	NO. _____	

PROFILE	SURVEYED	DATE
	PLOTTED	BY
	GRADES CHECKED	
	STRUCTURE NOTATIONS CHECKED	
	NO. _____	

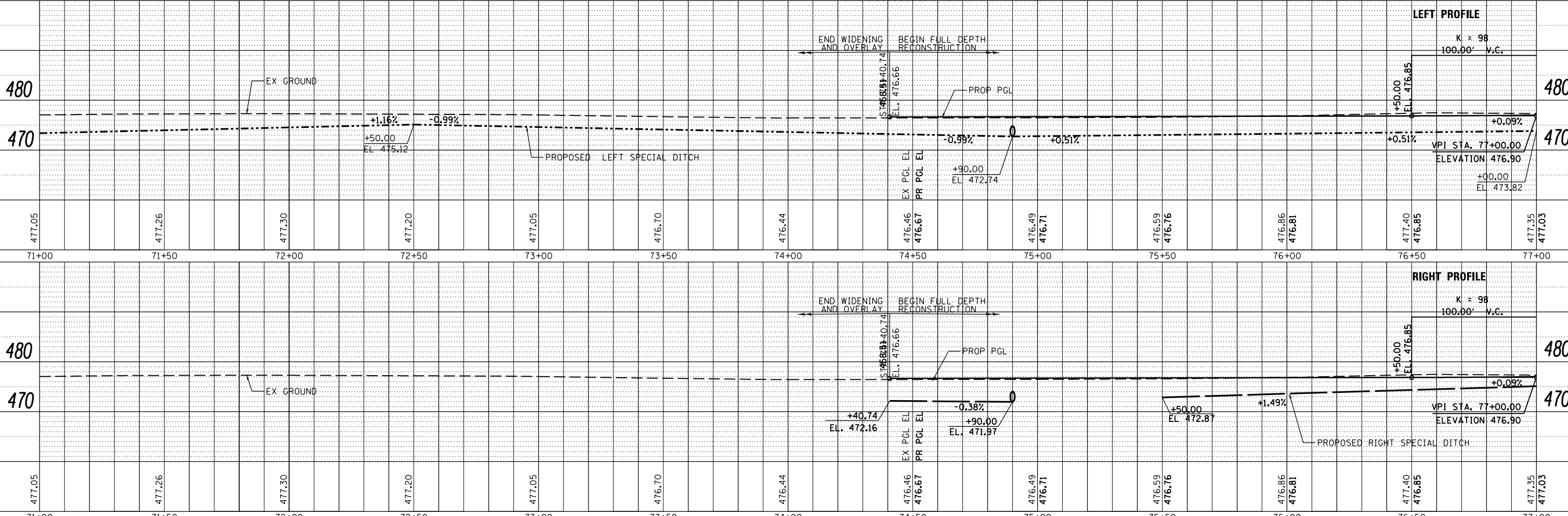


STATION	LT/RT	OFFSET
74+53.89	LT	15.00'
74+60.00	LT	15.01'
74+80.00	LT	15.11'
75+00.00	LT	15.33'
75+20.00	LT	15.67'
75+40.00	LT	16.15'
75+60.00	LT	16.74'
75+80.00	LT	17.46'
76+00.00	LT	18.30'
76+20.00	LT	18.93'
76+29.30	LT	19.00'

STATION	LT/RT	OFFSET
74+40.74	RT	11.00'
74+60.00	RT	11.06'
74+80.00	RT	11.24'
74+89.24	RT	11.36'

BENCHMARK		
BENCHMARK	ELEVATION	DESCRIPTION
BM13	462.77	CUT SQUARE ON THE TOP OF THE SOUTH HEADWALL OF AN ACROSS ROAD CULVERT. 107.79' RIGHT OF THE CL OF RTE 13 WBL @ STA. 547+28.49

NOTES:  
 1. FOR ADDITIONAL REMOVAL ITEMS, SEE PAVEMENT MARKING AND SIGNING DRAWINGS AND SCHEDULE DRAWINGS.  
 2. FOR ADDITIONAL SHARED USE PATH INFORMATION, SEE SHARED USE PATH ROADWAY, DRAINAGE AND UTILITY PLANS.  
 3. FOR CLARITY, ONLY VARIABLE DEPTH DITCHES ARE SHOWN ON THE PROFILE. REFER TO THE TYPICAL SECTIONS AND CROSS SECTIONS FOR DITCH INFORMATION.



FILE NAME =	USER NAME = \$USER\$	DESIGNED - KN	REVISED -	<b>STATE OF ILLINOIS</b> <b>DEPARTMENT OF TRANSPORTATION</b>	<b>ROADWAY, DRAINAGE AND UTILITY PLAN AND PROFILE</b> <b>NORTH FRONTAGE ROAD</b>	F.A.P. SECTION COUNTY TOTAL SHEETS SHEET NO.
c:\pwork\pwidot\lavenderba\d8363618\0978221-shr-plnprf-35.dgn	CHECKED - AS	REVIS	REVIS			331 (1-3)R-2, N-4, TS-4, HBK-1 WILLIAMSON 733 159
PLOT SCALE = 40.0000' / in.	DRAWN -	REVIS	REVIS			DRAWING NO. PL-35 CONTRACT NO. 78221
PLOT DATE = 1/31/2014	CHECKED -	REVIS	REVIS			ILLINOIS FED. AID PROJECT

SCALE: SHEET NO. 35 OF 69 SHEETS STA. 71+00.00 TO STA. 77+00.00