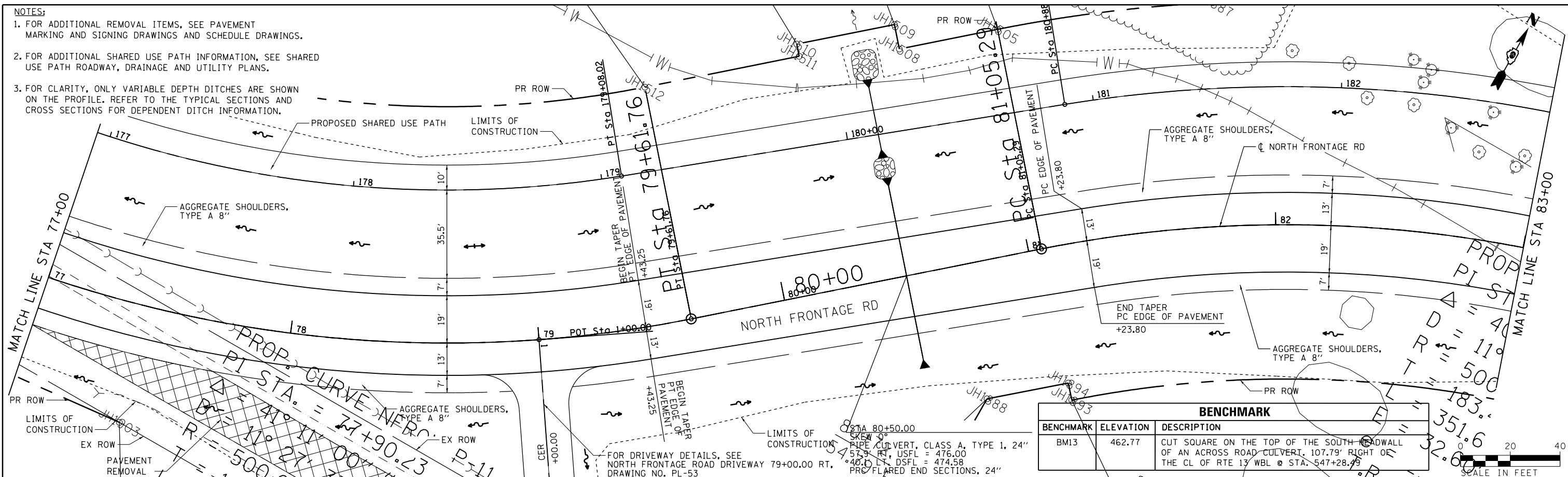


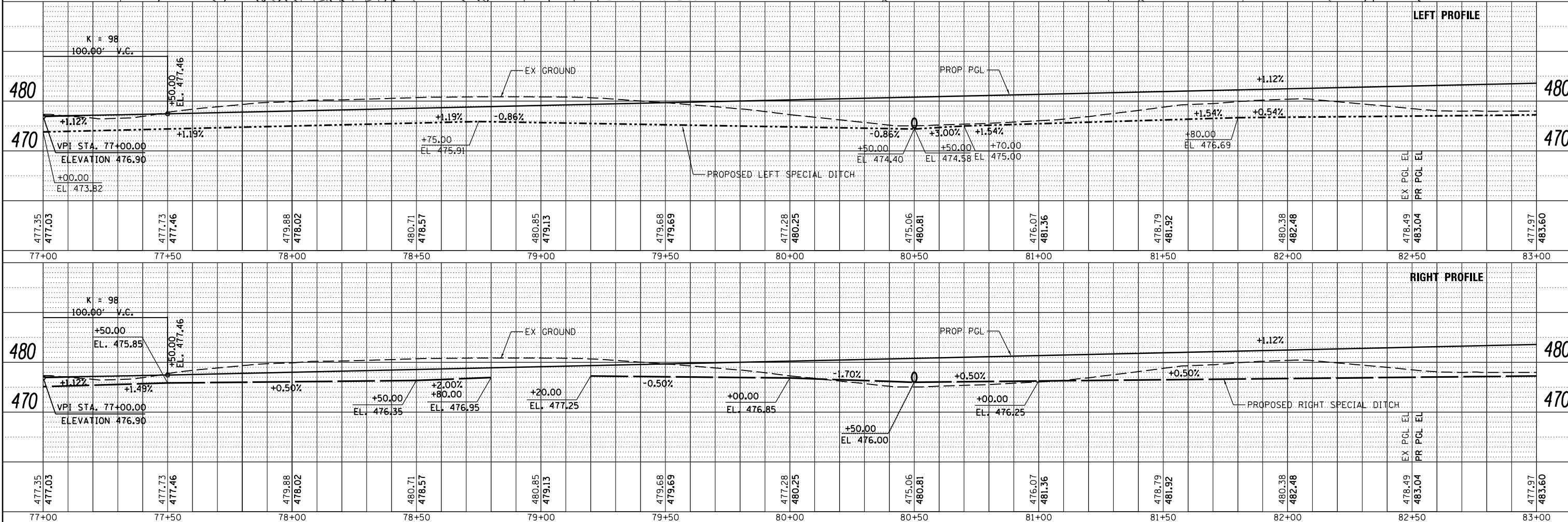
- NOTES:
- FOR ADDITIONAL REMOVAL ITEMS, SEE PAVEMENT MARKING AND SIGNING DRAWINGS AND SCHEDULE DRAWINGS.
 - FOR ADDITIONAL SHARED USE PATH INFORMATION, SEE SHARED USE PATH ROADWAY, DRAINAGE AND UTILITY PLANS.
 - FOR CLARITY, ONLY VARIABLE DEPTH DITCHES ARE SHOWN ON THE PROFILE. REFER TO THE TYPICAL SECTIONS AND CROSS SECTIONS FOR DEPENDENT DITCH INFORMATION.

PLAN	SURVEYED	DATE
	PLOTTED	BY
	ALIGNED	
	CHECKED	
	FILED	
	NO.	

PROFILE	SURVEYED	DATE
	PLOTTED	BY
	GRADES	
	CHECKED	
	STRUCTURE	
	NOTATIONS	
	CHKD	
	NO.	



BENCHMARK		
BENCHMARK	ELEVATION	DESCRIPTION
BM13	462.77	CUT SQUARE ON THE TOP OF THE SOUTH HEADWALL OF AN ACROSS ROAD CULVERT, 107.79' RIGHT OF THE CL OF RTE 13' WBL @ STA. 547+28.49



FILE NAME =	USER NAME = \$USER\$	DESIGNED - KN	REVISED -
c:\pwwork\pwwork\levenderba\d8363618\0978221-sht-plnprf-36.dgn		CHECKED - AS	REVISED -
		DRAWN -	REVISED -
		CHECKED -	REVISED -

STATE OF ILLINOIS
DEPARTMENT OF TRANSPORTATION

ROADWAY, DRAINAGE AND UTILITY PLAN AND PROFILE
NORTH FRONTAGE ROAD

SCALE: SHEET NO. 36 OF 69 SHEETS STA. 77+00.00 TO STA. 83+00.00

F.A.P. RTE.	SECTION	COUNTY	TOTAL SHEETS	SHEET NO.
331 (1-3)R-2, N-4, TS-4, HBK-1		WILLIAMSON	733	160
DRAWING NO. PL-36		CONTRACT NO. 78221		
ILLINOIS FED. AID PROJECT				