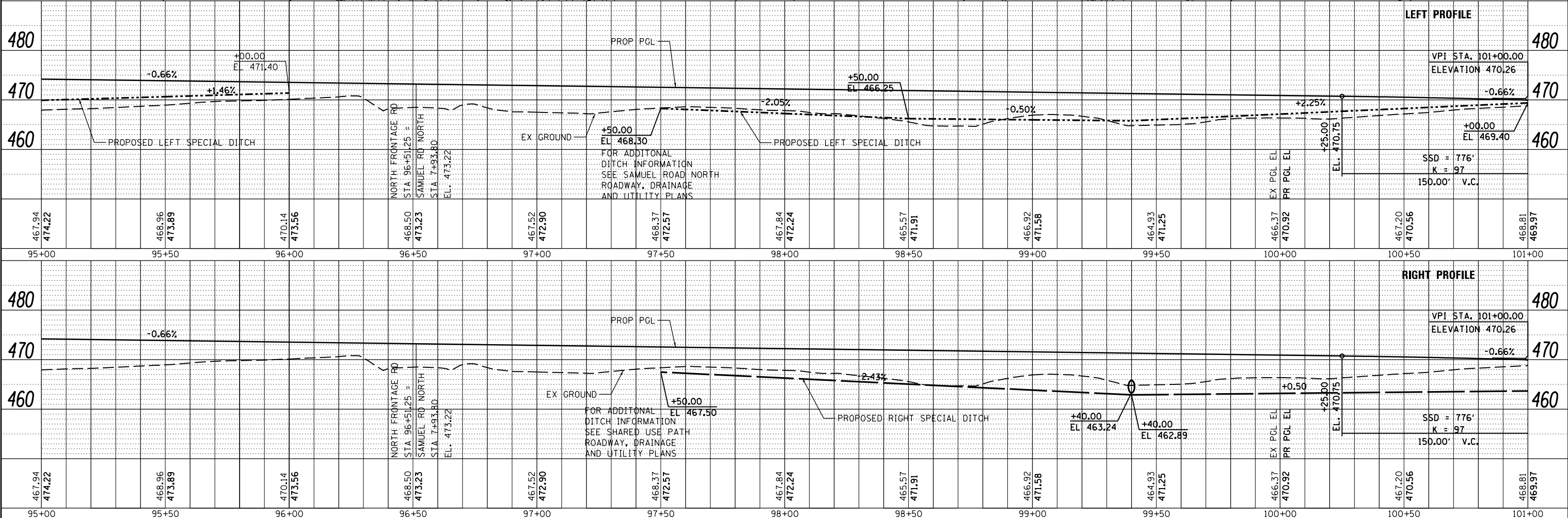
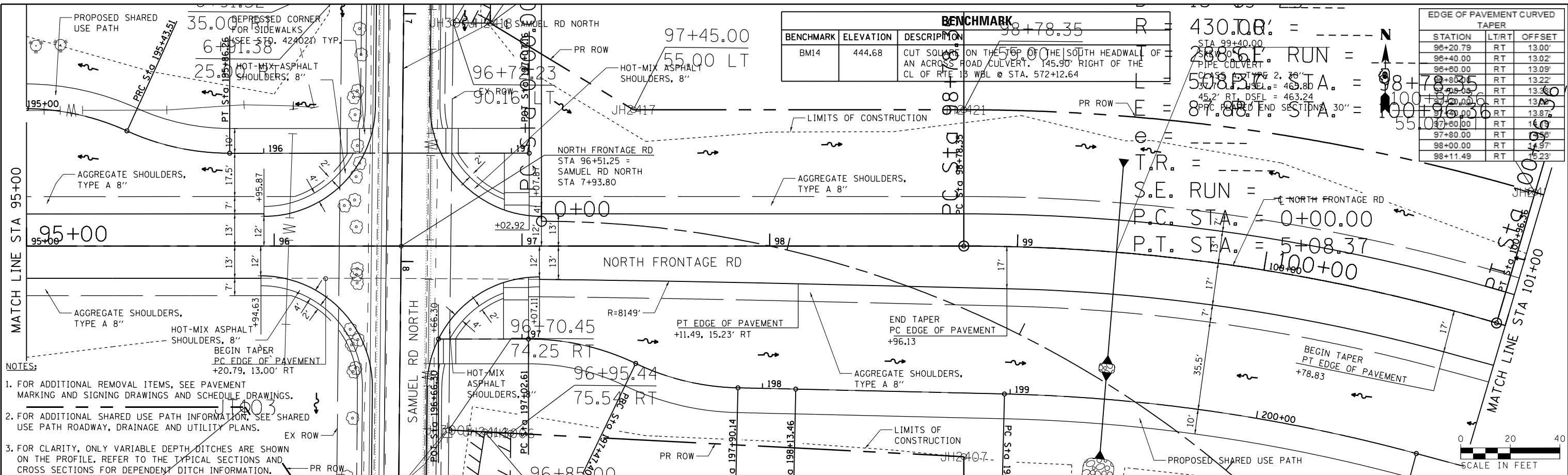


PLAN	SURVEYED	DATE
	PLOTTED	
	ALIGNED	
	CHECKED	
	NO. _____	
	BY _____	

PROFILE	SURVEYED	DATE
	PLOTTED	
	GRADES CHECKED	
	STRUCTURE NOTATIONS CHECKED	
	NO. _____	
	BY _____	

BENCHMARK	ELEVATION	DESCRIPTION
BM14	444.68	CUT SOLID ON THE TOP OF THE SOUTH HEADWALL OF AN ACROSS ROAD CULVERT, 145.90' RIGHT OF THE CL OF RTE. 15 WBL @ STA. 572+12.64

EDGE OF PAVEMENT CURVED TAPER		
STATION	L/RT	OFFSET
96+20.79	RT	13.00'
96+40.00	RT	13.02'
96+60.00	RT	13.09'
96+80.00	RT	13.22'
97+00.00	RT	13.36'
97+20.00	RT	13.50'
97+40.00	RT	13.75'
97+60.00	RT	14.10'
97+80.00	RT	14.57'
98+00.00	RT	15.17'
98+11.49	RT	15.23'



FILE NAME =	USER NAME = \$USER\$	DESIGNED - KN	REVISED -	<b>STATE OF ILLINOIS</b> <b>DEPARTMENT OF TRANSPORTATION</b>	<b>ROADWAY, DRAINAGE AND UTILITY PLAN AND PROFILE</b> <b>NORTH FRONTAGE ROAD</b>	F.A.P. RTE.	SECTION	COUNTY	TOTAL SHEETS	SHEET NO.
ci:\pwork\pwsdot\lavenderba\0363618\0978221-sht\p\prf-39.dgn		CHECKED - AS	REVISED -			331	(1-3)R-2, N-4, TS-4, HBK-1	WILLIAMSON	733	163
PLOT SCALE = 40.0000' / in.		DRAWN -	REVISED -			DRAWING NO. <b>PL-39</b>		CONTRACT NO. 78221		
PLOT DATE = 1/31/2014		CHECKED -	REVISED -			SCALE:		SHEET NO. 39 OF 69 SHEETS		STA. 95+00.00 TO STA. 101+00.00