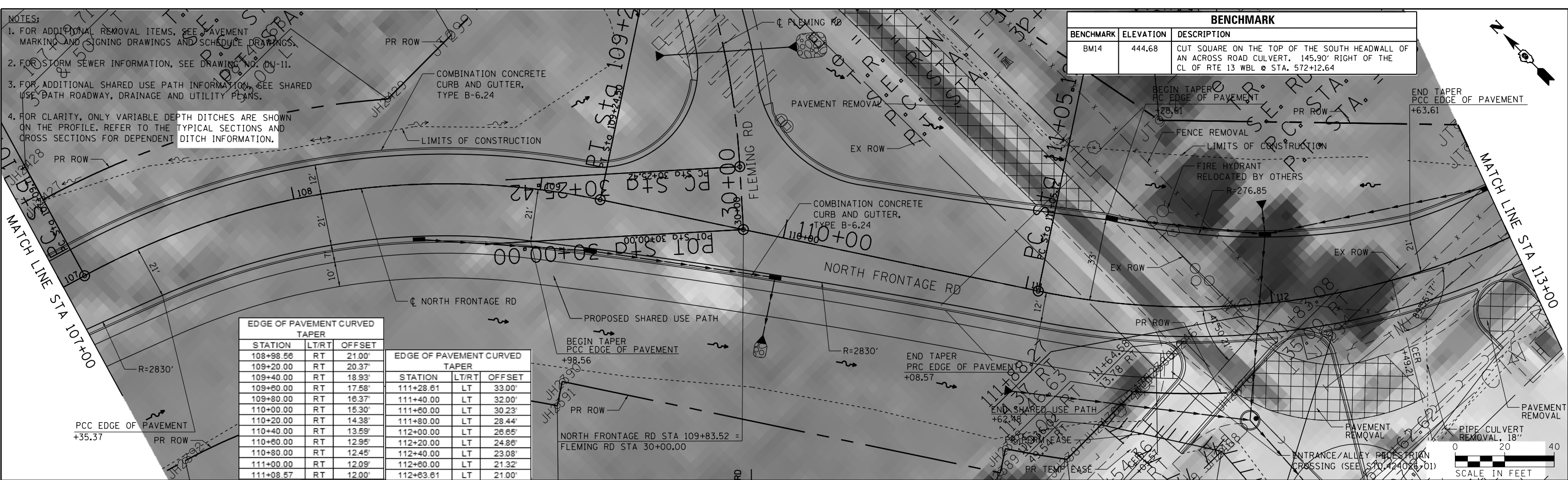


- NOTES:
- FOR ADDITIONAL REMOVAL ITEMS, SEE PAVEMENT MARKING AND SIGNING DRAWINGS AND SCHEDULE DRAWINGS.
 - FOR STORM SEWER INFORMATION, SEE DRAWING NO. DN-11.
 - FOR ADDITIONAL SHARED USE PATH INFORMATION, SEE SHARED USE PATH ROADWAY, DRAINAGE AND UTILITY PLANS.
 - FOR CLARITY, ONLY VARIABLE DEPTH DITCHES ARE SHOWN ON THE PROFILE. REFER TO THE TYPICAL SECTIONS AND CROSS SECTIONS FOR DEPENDENT DITCH INFORMATION.

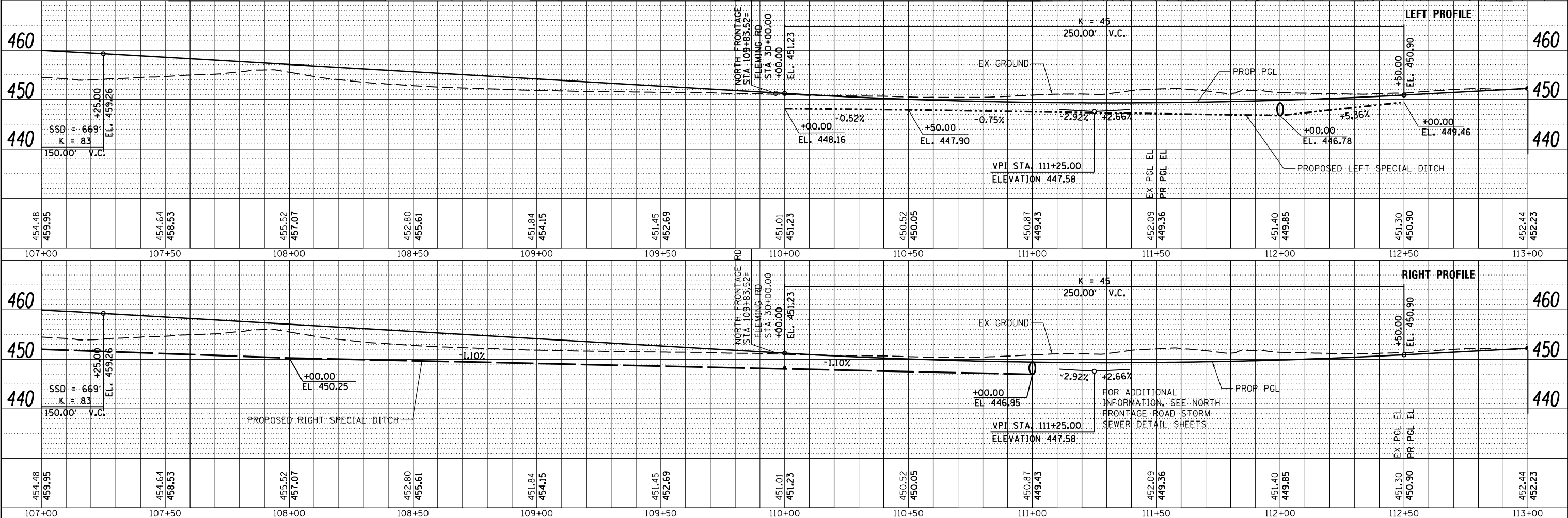
BENCHMARK		
BENCHMARK	ELEVATION	DESCRIPTION
BM14	444.68	CUT SQUARE ON THE TOP OF THE SOUTH HEADWALL OF AN ACROSS ROAD CULVERT, 145.90' RIGHT OF THE CL OF RTE 13 WBL @ STA. 572+12.64

PLAN	SURVEYED	DATE
	PLOTTED	
	ALIGNED	
	CHECKED	
	BY	
	NO. _____	

PROFILE	SURVEYED	DATE
	PLOTTED	
	GRADES CHECKED	
	STRUCTURE NOTATIONS CHECKED	
	BY	
	NO. _____	



EDGE OF PAVEMENT CURVED TAPER			EDGE OF PAVEMENT CURVED TAPER		
STATION	LT/RT	OFFSET	STATION	LT/RT	OFFSET
108+98.56	RT	21.00'	111+28.61	LT	33.00'
109+20.00	RT	20.37'	111+40.00	LT	32.00'
109+40.00	RT	18.93'	111+60.00	LT	30.23'
109+60.00	RT	17.58'	111+80.00	LT	28.44'
109+80.00	RT	16.37'	112+00.00	LT	26.65'
110+00.00	RT	15.30'	112+20.00	LT	24.86'
110+20.00	RT	14.38'	112+40.00	LT	23.08'
110+40.00	RT	13.59'	112+60.00	LT	21.32'
110+60.00	RT	12.95'	112+83.61	LT	21.00'
110+80.00	RT	12.45'			
111+00.00	RT	12.09'			
111+08.57	RT	12.00'			



FILE NAME =	USER NAME = sUSERs	DESIGNED - KN	REVISED -	STATE OF ILLINOIS DEPARTMENT OF TRANSPORTATION	ROADWAY, DRAINAGE AND UTILITY PLAN AND PROFILE NORTH FRONTAGE ROAD	F.A.P. SECTION	COUNTY	TOTAL SHEETS	SHEET NO.
c:\pwwork\pwwork\lavenderba\d8363618\0978221-sht-plnprf-41.dgn	CHECKED - AS	REVISIED -	331 (1-3)R-2, N-4, TS-4, HBK-1			WILLIAMSON	733	165	
PLOT SCALE = 40.0000' / in.	DRAWN -	REVISIED -	DRAWING NO. PL-41			CONTRACT NO. 78221			
PLOT DATE = 1/31/2014	CHECKED -	REVISIED -	ILLINOIS FED. AID PROJECT						