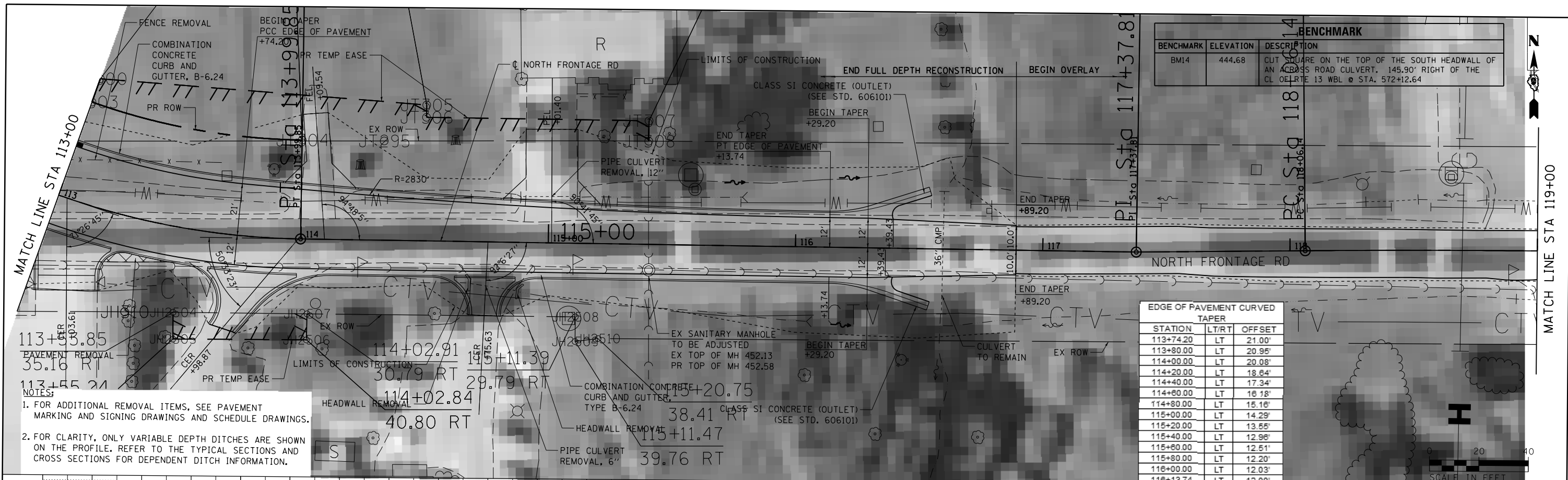


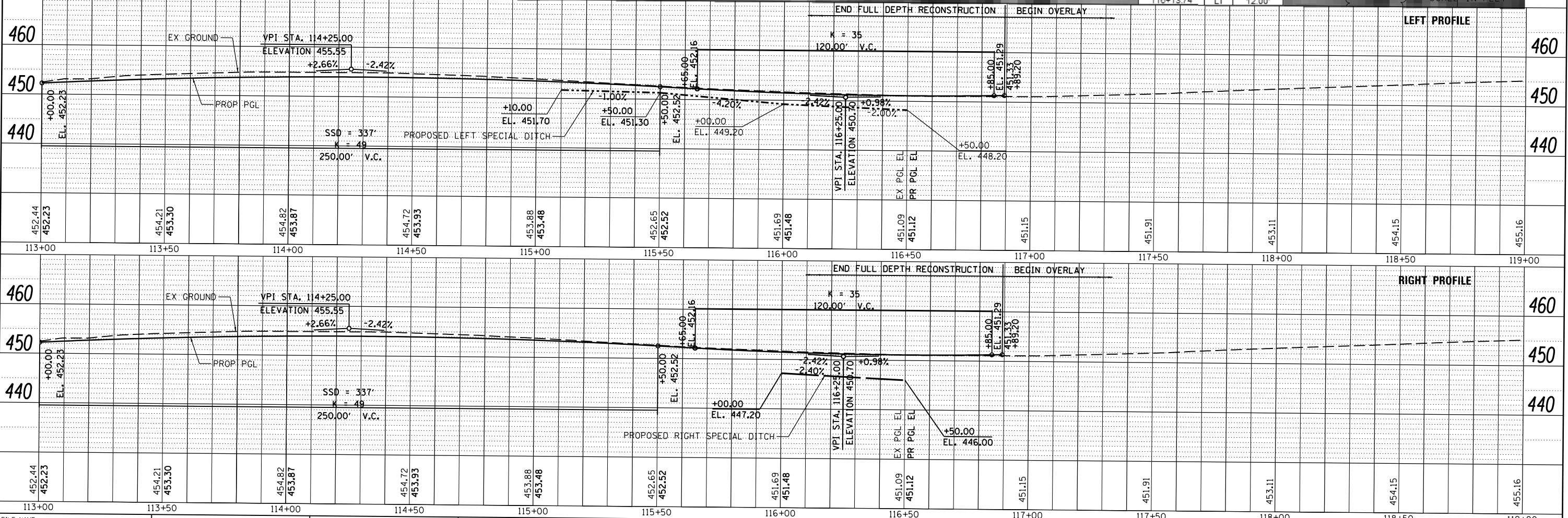
PLAN	SURVEYED	DATE
	ALIGNED	
	CHECKED	
	BY	
	NO.	
	FILE NAME	

PROFILE	SURVEYED	DATE
	GRADES	
	CHECKED	
	BY	
	NO.	
	FILE NAME	



BENCHMARK	ELEVATION	DESCRIPTION
BM14	444.68	CUT SQUARE ON THE TOP OF THE SOUTH HEADWALL OF AN ACROSS ROAD CULVERT. 145.90' RIGHT OF THE CL OF RTE 13 WBL @ STA. 572+12.64

STATION	LT/RT	OFFSET
113+74.20	LT	21.00'
113+80.00	LT	20.95'
114+00.00	LT	20.08'
114+20.00	LT	18.84'
114+40.00	LT	17.34'
114+60.00	LT	16.18'
114+80.00	LT	15.16'
115+00.00	LT	14.29'
115+20.00	LT	13.65'
115+40.00	LT	12.98'
115+60.00	LT	12.51'
115+80.00	LT	12.20'
116+00.00	LT	12.03'
116+13.74	LT	12.00'



FILE NAME =	USER NAME = #USER#	DESIGNED - KN	REVISED -	<b>STATE OF ILLINOIS</b> <b>DEPARTMENT OF TRANSPORTATION</b>	<b>ROADWAY, DRAINAGE AND UTILITY PLAN AND PROFILE</b> <b>NORTH FRONTAGE ROAD</b>	F.A.P. RTE.	SECTION	COUNTY	TOTAL SHEETS	SHEET NO.
ci:\pwwork\p\david\lavender\ba\d0363618\097	221-sh-t-plnprf-42.dgn	CHECKED - AS	REVISED -			331	(1-31R-2, N-4, TS-4, HBK-1)	WILLIAMSON	733	16221
PLOT SCALE = 40.5241' / in.	PLOT DATE = 1/31/2014	DRAWN -	REVISED -			DRAWING NO.	PL-42	CONTRACT NO.	78221	
		CHECKED -	REVISED -			SCALE:	SHEET NO. 42 OF 69 SHEETS	STA. 113+00.00 TO STA. 119+00.00	ILLINOIS FED. AID PROJECT	