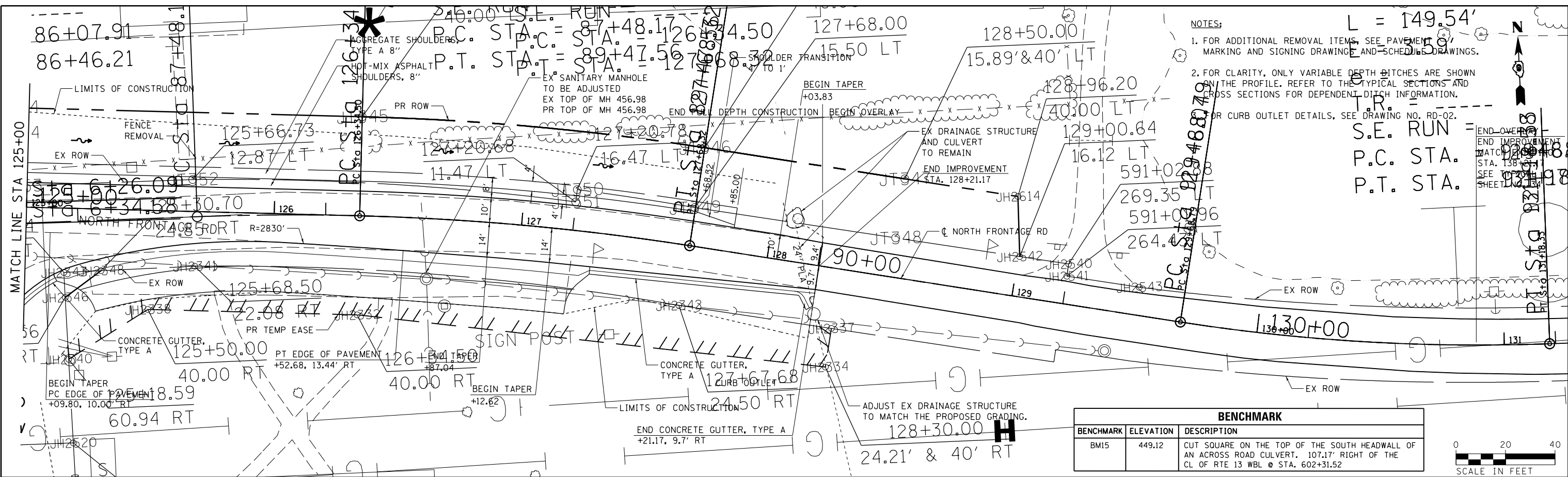


PLAN	SURVEYED	DATE
	PLOTTED	
	ALIGNED	
	CHECKED	
	NO. _____	
	NO. _____	
	NO. _____	

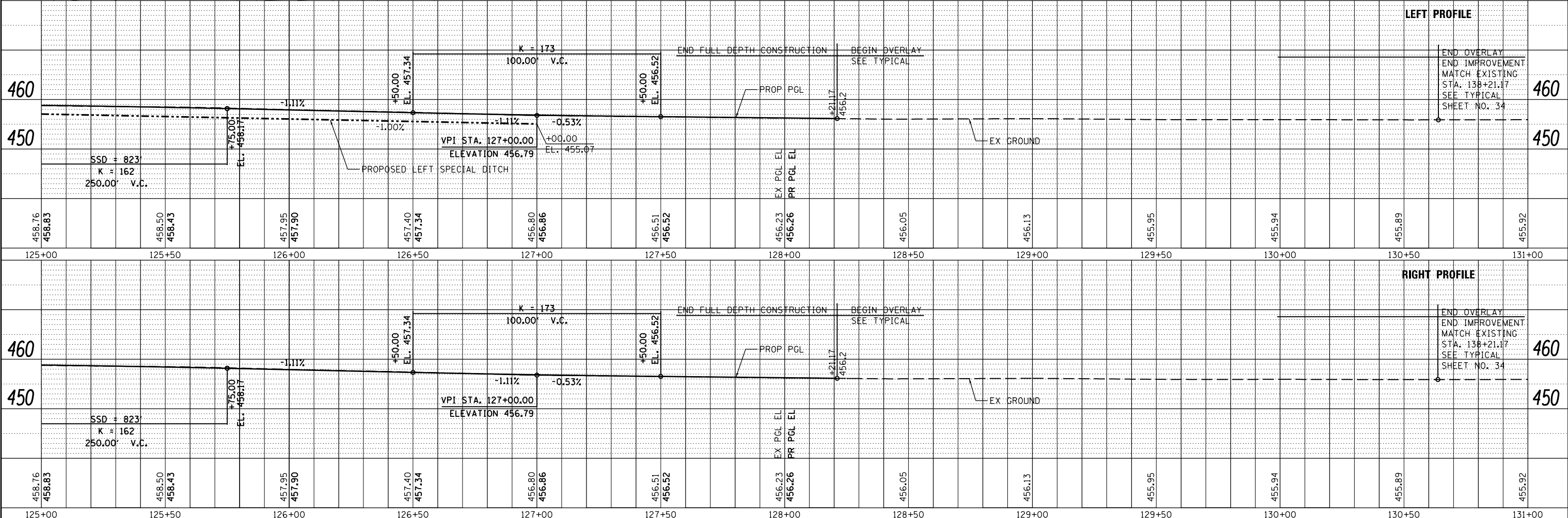
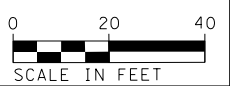
PROFILE	SURVEYED	DATE
	PLOTTED	
	GRADES	
	CHECKED	
	NO. _____	
	NO. _____	
	NO. _____	



NOTES:  
 1. FOR ADDITIONAL REMOVAL ITEMS, SEE PAVEMENT MARKING AND SIGNING DRAWING AND SCHEDULE DRAWINGS.  
 2. FOR CLARITY, ONLY VARIABLE DEPTH BITCHES ARE SHOWN ON THE PROFILE. REFER TO THE TYPICAL SECTIONS AND CROSS SECTIONS FOR DEPENDENT DITCH INFORMATION.  
 OR CURB OUTLET DETAILS, SEE DRAWING NO. RD-02.

L = 149.54'  
 S.E. RUN = 315.9'  
 P.C. STA. 126+34.52  
 P.T. STA. 127+84.06  
 END OVERLAY STA. 138+21.17  
 MATCH EXISTING STA. 138+21.17  
 SEE TYPICAL SHEET NO. 34

BENCHMARK		
BENCHMARK	ELEVATION	DESCRIPTION
BM15	449.12	CUT SQUARE ON THE TOP OF THE SOUTH HEADWALL OF AN ACROSS ROAD CULVERT, 107.17' RIGHT OF THE CL OF RTE 13 WBL @ STA. 602+31.52



FILE NAME =	USER NAME = suser*	DESIGNED - KN	REVISED -	<b>STATE OF ILLINOIS</b> <b>DEPARTMENT OF TRANSPORTATION</b>	<b>ROADWAY, DRAINAGE AND UTILITY PLAN AND PROFILE</b> <b>NORTH FRONTAGE ROAD</b>	F.A.P. RTE.	SECTION	COUNTY	TOTAL SHEETS	SHEET NO.
c:\pwork\pwork\lavenderba\8363618\0978221-sht-plnprf-44.dgn	CHECKED - AS	CHECKED -	REVISED -			331	(1-3)R-2, N-4, TS-4, HBK-1	WILLIAMSON	733	168
PLOT SCALE = 40.0000' / in.	DRAWN -	DRAWN -	REVISED -			DRAWING NO.	PL-44	CONTRACT NO.	78221	
PLOT DATE = 1/31/2014	CHECKED -	CHECKED -	REVISED -			SCALE:	SHEET NO. 44 OF 69 SHEETS	STA. 125+00.00 TO STA. 128+21.17	ILLINOIS FED. AID PROJECT	